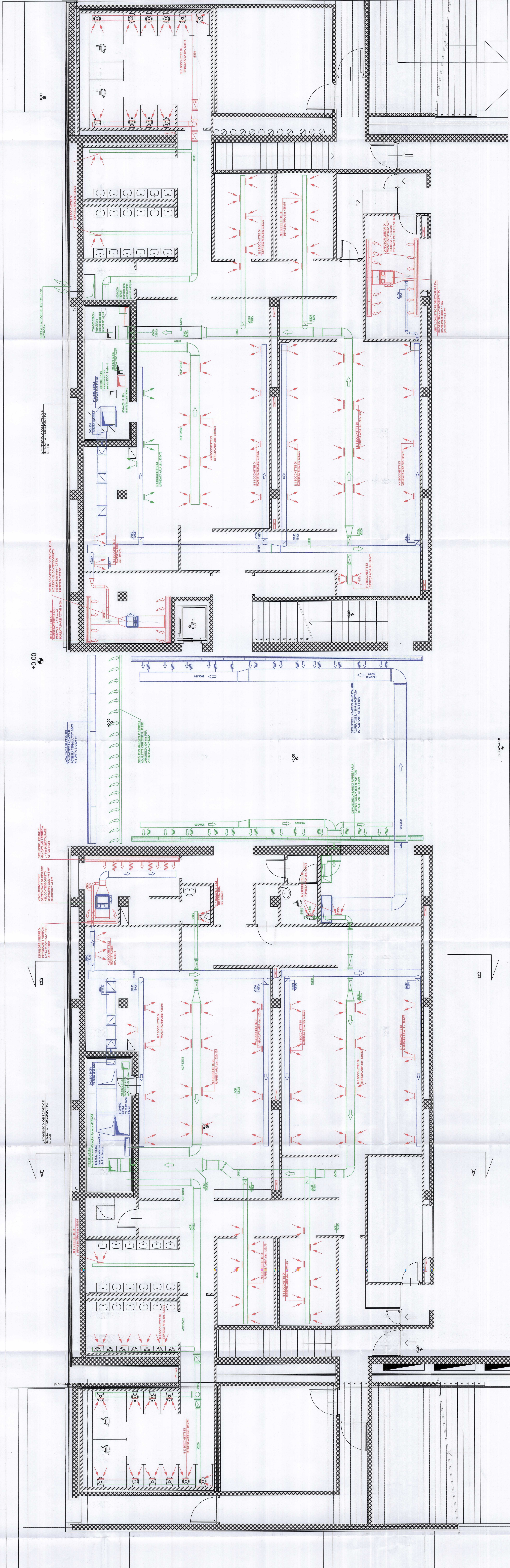
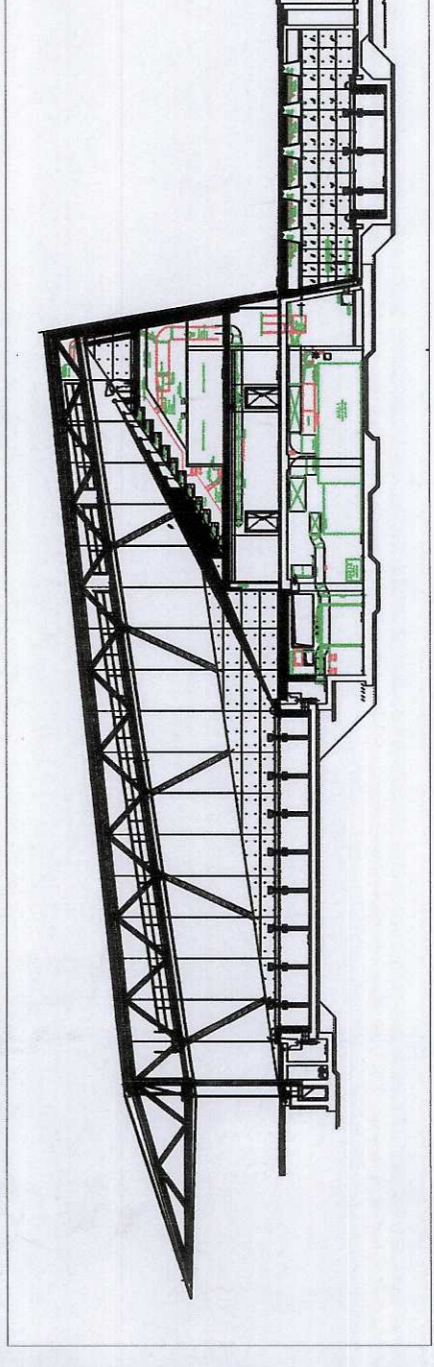


INQUADRO  
 BIPOLARE  
 ESPANSIVO  
 D.M. 18/01/2003



**NOVAIMPANTI sas**  
 Corso Sallustiana, 371 - 10135 TORINO  
 Tel. +39 011 31 20 01  
 Fax +39 011 31 20 02



INQUADRO  
**NOVAIMPANTI sas**  
**COSMO UNIONE SOVIETICA, 371 - 10135 TORINO**  
 Progetto di condizionamento planetario del teatro - in Pianellato 89 - Torino

DATA  
**piano terra AS BUILT**

DATA  
**28.10.2009**

DATA  
**28.10.2009**

DATA  
**28.10.2009**

DATA  
**28.10.2009**

DATA  
**28.10.2009**

DATA  
**28.10.2009**

DATA  
**28.10.2009**

DATA  
**28.10.2009**

DATA  
**28.10.2009**

DATA  
**28.10.2009**

Scala 1:50

CBZ 01