

**LEGENDA**

=====  
n. 2 PLAFONIERE 1x58W CON REATTORE REATTORE ELETTRONICO COLLEGATE SU CIRCUITO 04 - QIES2

=====  
N° 12 PLAFONIERE 1x36W CON REATTORE ELETTRONICO COLLEGATE SU CIRCUITO 04 - QIES2

=====  
N° 1 PLAFONIERA LINDA 1x18W CON REATTORE ELETTRONICO COLLEGATE SU CIRCUITO ALLOGGIO CUSTODE

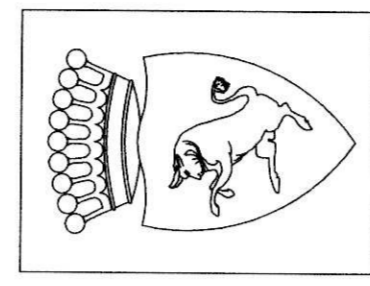
☒  
QUADRO UFFICI - SFOGLIATOI

☒  
QUADRO ILLUMINAZIONE - ESTERNA NORMALE - SIC - OGIES

☒  
QUADRO ILLUMINAZIONE - ESTERNA SIC - QIES1

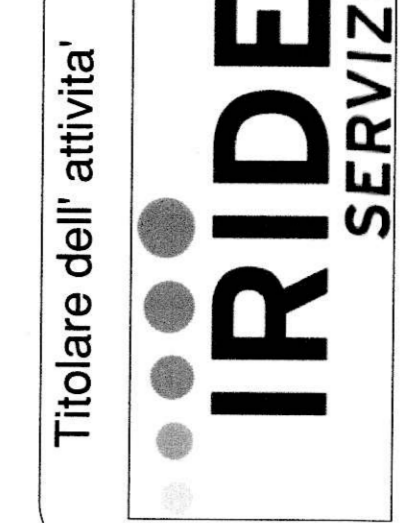
☒  
QUADRO ILLUMINAZIONE - ESTERNA SIC - QIES2

**TAVOLA DI RIFERIMENTO:**  
TAV. n° G023-P-22 APRILE 2004  
Ditta: M.I.T. s.r.l.  
Progetto: ELETTRICA PROGETTI s.r.l.



CITTA' DI TORINO

PERIZIA TECNICO-NORMATIVA DEGLI IMPIANTI ELETTRICI E SPECIALI PER INTERVENTI DI MANUTENZIONE STRAORDINARIA PRESSO L'IMPIANTO SPORTIVO "PRIMO NEBIOLO"  
VIALE HUGUES, 10 - TORINO  
STADIO DI ATLETICA



Titolare dell'attività  
**IRIDE**  
SERVIZI

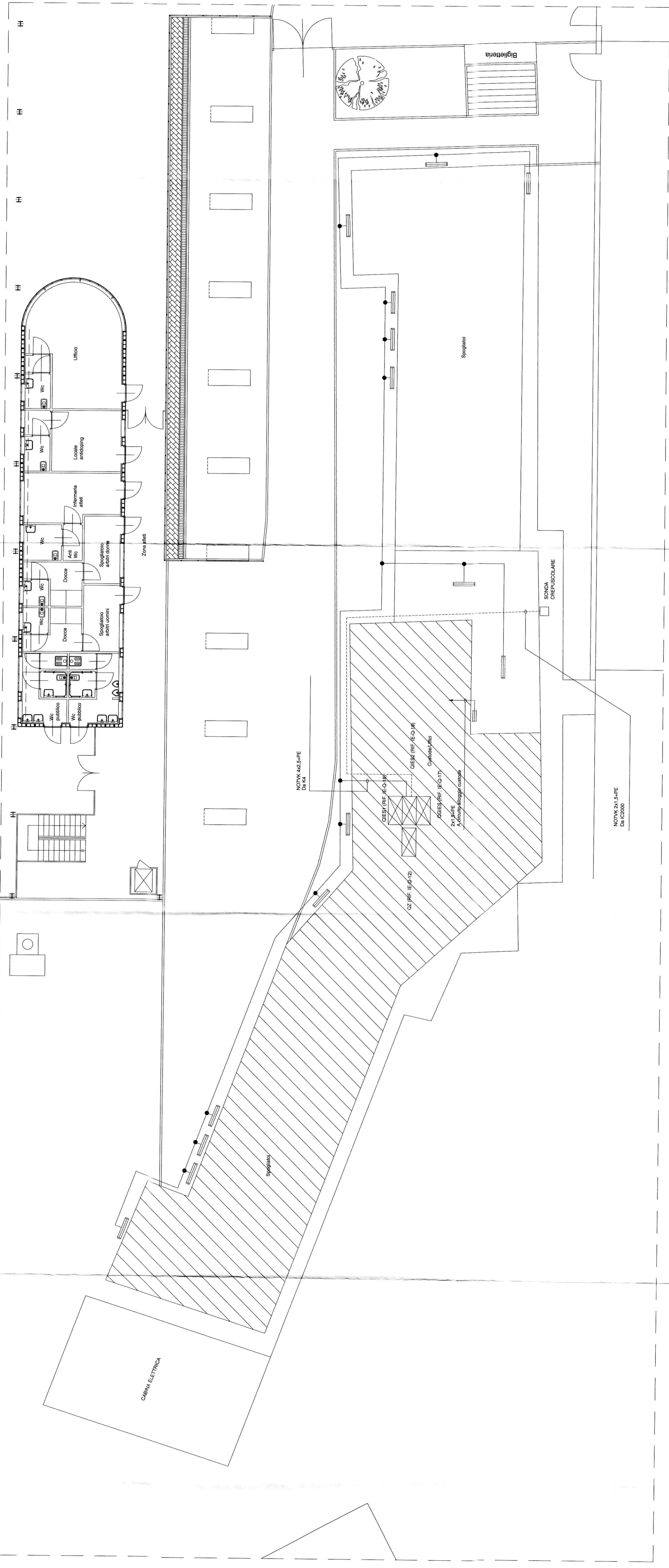
Il progettista:  
P.I. Esperto Marco  
C. so. C. G. Allamano, 40 m  
10136 - Torino  
Tel. 011-5354678  
Fax 011-5354678  
e mail: [progett@studioiride.it](mailto:progett@studioiride.it)  
collaboratori:  
P.I. Simona Raballo  
P.I. Mirco Raballo

OGGETTO: IMPIANTI ELETTRICI E SPECIALI  
PLANIMETRIA IMPIANTO LUCI ESTERNE FABBRICATO UFFICI - SFOGLIATOI

SCALE: 1:100

REV.	MODIFICHE	DATA	OPERATORE
0	EMISSIONE	Settembre 2011	M.R.
1	REVISIONE	Febbraio 2012	M.R.
2	REVISIONE	Marzo 2012	M.R.
3	REVISIONE	Giugno 2012	M.R.
4			
5			

ELABORATO: EP-13\_2



NOTA: 423-5/PE DA K4

QIES1 (REF. I(CO-17))  
QIES2 (REF. I(CO-17))  
QIES3 (REF. I(CO-17))  
QIES4 (REF. I(CO-17))  
QIES5 (REF. I(CO-17))  
QIES6 (REF. I(CO-17))  
QIES7 (REF. I(CO-17))  
QIES8 (REF. I(CO-17))  
QIES9 (REF. I(CO-17))  
QIES10 (REF. I(CO-17))  
QIES11 (REF. I(CO-17))  
QIES12 (REF. I(CO-17))  
QIES13 (REF. I(CO-17))  
QIES14 (REF. I(CO-17))  
QIES15 (REF. I(CO-17))  
QIES16 (REF. I(CO-17))  
QIES17 (REF. I(CO-17))  
QIES18 (REF. I(CO-17))  
QIES19 (REF. I(CO-17))  
QIES20 (REF. I(CO-17))  
QIES21 (REF. I(CO-17))  
QIES22 (REF. I(CO-17))  
QIES23 (REF. I(CO-17))  
QIES24 (REF. I(CO-17))  
QIES25 (REF. I(CO-17))  
QIES26 (REF. I(CO-17))  
QIES27 (REF. I(CO-17))  
QIES28 (REF. I(CO-17))  
QIES29 (REF. I(CO-17))  
QIES30 (REF. I(CO-17))  
QIES31 (REF. I(CO-17))  
QIES32 (REF. I(CO-17))  
QIES33 (REF. I(CO-17))  
QIES34 (REF. I(CO-17))  
QIES35 (REF. I(CO-17))  
QIES36 (REF. I(CO-17))  
QIES37 (REF. I(CO-17))  
QIES38 (REF. I(CO-17))  
QIES39 (REF. I(CO-17))  
QIES40 (REF. I(CO-17))  
QIES41 (REF. I(CO-17))  
QIES42 (REF. I(CO-17))  
QIES43 (REF. I(CO-17))  
QIES44 (REF. I(CO-17))  
QIES45 (REF. I(CO-17))  
QIES46 (REF. I(CO-17))  
QIES47 (REF. I(CO-17))  
QIES48 (REF. I(CO-17))  
QIES49 (REF. I(CO-17))  
QIES50 (REF. I(CO-17))  
QIES51 (REF. I(CO-17))  
QIES52 (REF. I(CO-17))  
QIES53 (REF. I(CO-17))  
QIES54 (REF. I(CO-17))  
QIES55 (REF. I(CO-17))  
QIES56 (REF. I(CO-17))  
QIES57 (REF. I(CO-17))  
QIES58 (REF. I(CO-17))  
QIES59 (REF. I(CO-17))  
QIES60 (REF. I(CO-17))  
QIES61 (REF. I(CO-17))  
QIES62 (REF. I(CO-17))  
QIES63 (REF. I(CO-17))  
QIES64 (REF. I(CO-17))  
QIES65 (REF. I(CO-17))  
QIES66 (REF. I(CO-17))  
QIES67 (REF. I(CO-17))  
QIES68 (REF. I(CO-17))  
QIES69 (REF. I(CO-17))  
QIES70 (REF. I(CO-17))  
QIES71 (REF. I(CO-17))  
QIES72 (REF. I(CO-17))  
QIES73 (REF. I(CO-17))  
QIES74 (REF. I(CO-17))  
QIES75 (REF. I(CO-17))  
QIES76 (REF. I(CO-17))  
QIES77 (REF. I(CO-17))  
QIES78 (REF. I(CO-17))  
QIES79 (REF. I(CO-17))  
QIES80 (REF. I(CO-17))  
QIES81 (REF. I(CO-17))  
QIES82 (REF. I(CO-17))  
QIES83 (REF. I(CO-17))  
QIES84 (REF. I(CO-17))  
QIES85 (REF. I(CO-17))  
QIES86 (REF. I(CO-17))  
QIES87 (REF. I(CO-17))  
QIES88 (REF. I(CO-17))  
QIES89 (REF. I(CO-17))  
QIES90 (REF. I(CO-17))  
QIES91 (REF. I(CO-17))  
QIES92 (REF. I(CO-17))  
QIES93 (REF. I(CO-17))  
QIES94 (REF. I(CO-17))  
QIES95 (REF. I(CO-17))  
QIES96 (REF. I(CO-17))  
QIES97 (REF. I(CO-17))  
QIES98 (REF. I(CO-17))  
QIES99 (REF. I(CO-17))  
QIES100 (REF. I(CO-17))

NOTA: 423-5/PE DA K2000