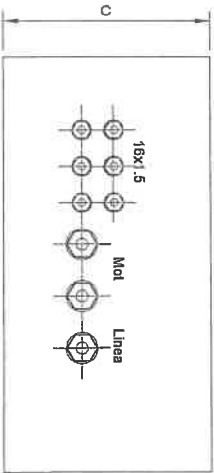
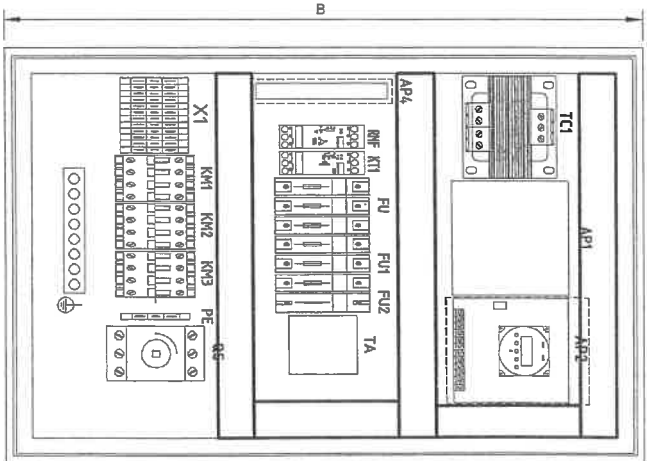
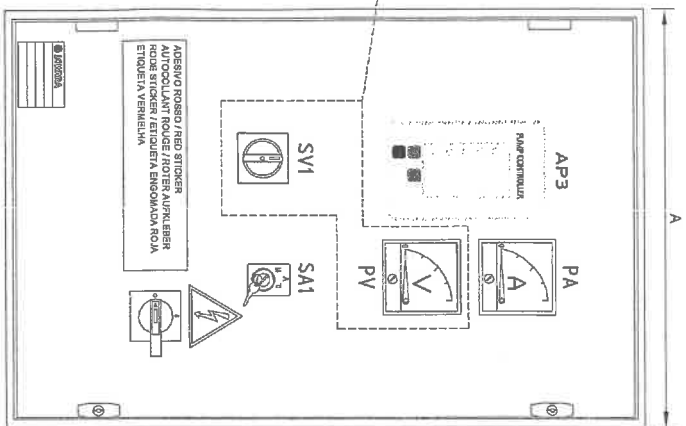


QUADRO ELETRICO	TIPO	40.185	220.370
CONTROL BOX	TYPE	400	500
COFFRET ELECTRIQUE	TYPE	600	700
SCHALTTAFEL	TYP	200	200
SCHAKELKAST	TYP		
CUADRO DE MANDO	TIPO		
QUADRO ELÉCTRICO	TIPO		
SÄHKÖTALU	TYYPPI		

SV1+PV
 Kivivälähdin a rihistia
 Kivivälähdin on erillinen
 Kivivälähdin on erillinen
 Separation des essor-chaussés sur entrée
 Verschluss auf abseits
 Kivivälähdin on erillinen
 Kivivälähdin on erillinen
 -Istrenntschalttaula tilakkaista



QUADRO ELETRICO	TIPO	Linea	Mot
CONTROL BOX	TYPE	25x1.5	25x1.5
COFFRET ELECTRIQUE	TYPE	110-185	25x1.5
SCHALTTAFEL	TYP	32x1.5	25x1.5
SCHAKELKAST	TYP	40x1.5	32x1.5
CUADRO DE MANDO	TIPO		
QUADRO ELÉCTRICO	TIPO		
SÄHKÖTALU	TYYPPI		



ITT

Lowara

Draw. N.	QFY0002A0	REV. C
CAD	SPAC	ECN: 08/245
File Name	QFY0002A0.dwg	
Date	16/03/2007	


Plant	QFY/40..370
Denomination	DISEGNO MECCANICO MECHANICAL DRAWINGS

DRAW	REPLACED	SHEET
A.D.		2
CHECKED	REPLACES	
M.R.	rev B	
APPROVED		
A.V.		3

EXCLUSIVE PROPERTY OF LOWARA Srl. ACCORDING TO LAW THIS DRAWING CANNOT BE REPRODUCED OR DISTRIBUTED UNLESS AUTHORIZED IN WRITING BY LOWARA Srl

QTY	DESCRIPTION	MANUFACTURER	TYPE	LOWARA CODE	DATA TECNICA
OS 1	INTERRUPTORE PRINCIPALE MAIN SWITCH INTERRUPTEUR GENERAL HOOFDSCHAKELAAR INTERRUPTOR GENERAL PÄÄKKYTKIN	ABB	OT10E3 OT12E3 OT14E3 OT16E3 OT18E3 OT10E3 OT12E3	023642801 023642803 023642804 023642805 023642806 023642807 023642808	1e=18A 1e=22A 1e=25A 1e=32A 1e=40A 1e=50A 1e=63A 1e=80A 1e=100A 1e=125A 1e=160A 1e=200A
FU 3 FU2 1	FUSIBILE FUZE FUSE SICHERUNG ZEKERING FLUSVEL SULAKE	WIEBER OMHSA	6A gG 10A gG 12A gG 16A gG 25A gG	002566452 002566454 002566456 002566458 002566459	CH10 L=500V Ik=100kA
AP3 1	SCHEDA ELETTRONICA ELECTRONICS CARD CARTE ELECTRONIQUE ELEKTRONISCHEN PLATINE ELEKTRONISCHE KAART TARJETA ELECTRONICA PLACA ELECTRONICA PIIKKORTTI	LOWARA	T128	160890480	12V/5000HZ
AP1 1	SCHEDA ELETTRONICA ELECTRONICS CARD CARTE ELECTRONIQUE ELEKTRONISCHEN PLATINE ELEKTRONISCHE KAART TARJETA ELECTRONICA PLACA ELECTRONICA PIIKKORTTI	LOWARA	C128	160890480	24V/5000HZ
SA1 1	SELETTORE 3P 3P SELECTOR WÄHL SCHALTER KEZERSCHAKELAAR 3P SELECTOR 3P 3-FAZ. VALITSIN	SIEMENS	3S31 004D01 4S31 004D02 4S31 004D03 4S31 004D04 4S31 004D05 4S31 004D06 4S31 004D07 4S31 004D08 4S31 004D09 4S31 004D10 4S31 004D11 4S31 004D12 4S31 004D13 4S31 004D14 4S31 004D15 4S31 004D16 4S31 004D17 4S31 004D18 4S31 004D19 4S31 004D20	002831207 002831208 002831209 002831210 002831211 002831212 002831213 002831214 002831215 002831216 002831217 002831218 002831219 002831220 002831221 002831222 002831223 002831224 002831225 002831226 002831227 002831228 002831229 002831230 002831231 002831232 002831233 002831234 002831235 002831236 002831237 002831238 002831239 002831240 002831241 002831242 002831243 002831244 002831245 002831246 002831247 002831248 002831249 002831250 002831251 002831252 002831253 002831254 002831255 002831256 002831257 002831258 002831259 002831260 002831261 002831262 002831263 002831264 002831265 002831266 002831267 002831268 002831269 002831270 002831271 002831272 002831273 002831274 002831275 002831276 002831277 002831278 002831279 002831280 002831281 002831282 002831283 002831284 002831285 002831286 002831287 002831288 002831289 002831290 002831291 002831292 002831293 002831294 002831295 002831296 002831297 002831298 002831299 002831300 002831301 002831302 002831303 002831304 002831305 002831306 002831307 002831308 002831309 002831310 002831311 002831312 002831313 002831314 002831315 002831316 002831317 002831318 002831319 002831320 002831321 002831322 002831323 002831324 002831325 002831326 002831327 002831328 002831329 002831330 002831331 002831332 002831333 002831334 002831335 002831336 002831337 002831338 002831339 002831340 002831341 002831342 002831343 002831344 002831345 002831346 002831347 002831348 002831349 002831350 002831351 002831352 002831353 002831354 002831355 002831356 002831357 002831358 002831359 002831360 002831361 002831362 002831363 002831364 002831365 002831366 002831367 002831368 002831369 002831370 002831371 002831372 002831373 002831374 002831375 002831376 002831377 002831378 002831379 002831380 002831381 002831382 002831383 002831384 002831385 002831386 002831387 002831388 002831389 002831390 002831391 002831392 002831393 002831394 002831395 002831396 002831397 002831398 002831399 002831400	S=180VA S=250VA U1=0-220-400V U2=0-220-50V Class F
TC1 1	TRASFORMATORE MONOFASE SINGLE-PHASE TRANSFORMER TRANSFORMATEUR MONOPHASE EINPHASENTRANSFORMATOR MONOFASE TRANSFORMATOR TRANSFORMADOR MONOFASICO TRANSFORMADOR MONOFASICO YKSIVAIHEUUNUTTA	TECNOCBLAAGI	002831207	S=180VA S=250VA U1=0-220-400V U2=0-220-50V Class F	

QTY	DESCRIPTION	MANUFACTURER	TYPE	LOWARA CODE	DATA TECNICA
X1 1-12	MORSETTO TERMINAL TERMINAL KLEMMEN KLEMEN BORNE BORNE LITIN	CABUR	DAS 4/6	002831231	4mm2
FU 1 FU2 1	PORTAFUSIBILE FUSE HOLDER PORTE FUSIBLES SICHERUNGSHALTER ZEKERINGSHOLDER PORTA FUSIBILE PORTA FUSIBILE SULAKKOTIELO	ITALWEBER	BOH 1x38 BOH 3x38 BOH 3x61 BOH 3x68	002830073 002830075 002830077 002830078	16/6A 30/6A 50/6A 100/6A
TA 1	TRASFORMATORE AMPEROMETRICO CURRENT TRANSFORMER TRANSFORMATEUR DE COURANT STROMWANDLER AMPERETRANSFORMATOR TRANSFORMADOR AMPEROMETRICO TRANSFORMADOR DE INTENSIDADE VIRTAMUUNTAMA	FREER	002831231	30/5A 50/5A 100/5A	
PA 1	AMPEROMETRO AMPERMETRE AMPERMETRE AMPERMETRE AMPERMETRO AMPERMETRO AMPERMETRO AMPERMETRO	FREER	002830073 002830075 002830077 002830078	16/6A 30/6A 50/6A 100/6A	
RMF 1	RELE MANCANZA FASE PHASE FAILURE RELAY RELAIS A MANQUE DE PHASE FASELUVASTARELAIS RELE DE FALTA DE FASE RELES DE FALLO DE FASE VAHÄEN PUUTTUMISEN VALVONTARELE	ABB	CM-PFE	002827870	208-440V 50/60Hz
KT1 1	TEMPORIZZATORE ELETTRONICO TIME ELECTRONIC RELAY RELAIS DE TEMPS ZEIT-RELAIS HET RELAIS VAN DE TIJD RELAIS DEL TIEMPO RELE DO TEMPO ELEKTRONIMEN AJASTIN	ABB	CT-SDE 02	002827870	24-240V
MM 1-3	CONTRATTORE CONTRACTOR CONTRACTEUR SCHUTZ CONTRACTSCHUTTER KONTAKTOR KONTAKTORI	ABB	A8-30-10 A12-30-10 A16-30-10 A20-30-10 A25-30-10 A30-30-10 A40-30-10 A50-30-10 A63-30-10	002823401 002823402 002823403 002823404 002823405 002823406 002823407 002823408 002823409	6e=6A 6e=12A 6e=16A 6e=20A 6e=25A 6e=30A 6e=40A 6e=50A 6e=63A
PE 1	MORSETTO DI TERRA EARTHING TERMINAL TERMINAL DE TERRE ERDANSCHLUSSE AARDKLEEM BORNE DE TERRA BORNE DE TERRA	CABUR	TE40 TE60 TE100 TE160 TE380	002831231	4 6 10 16 35 mm2



ITT

Lowara

File Name: QFY00022A0.dwg
Date: 16/03/2007

Draw. N. **QFY00022A0**

CAD: **SPAC**

REV. **C** ECN: **08/245**

Plant: **QFY/40..370**

Denomination: **DISTINTA MATERIALI SPARE PARTS**

DRAW: **A.D.**

CHECKED: **M.R.**

APPROVED: **A.V.**

REPLACES: **rev B**

SHEET: **3**

NEXT: **3A**

EXCLUSIVE PROPERTY OF LOWARA Srl. ACCORDING TO LAW THIS DRAWING CANNOT BE REPRODUCED OR DISTRIBUTED UNLESS AUTHORIZED IN WRITING BY LOWARA Srl

QTY	QTY	DESCRIPTION	CONSTRUCTORE	TIPO	LOWARA CODE	DATI TECNICI
QTY	QTY	DESCRIPTION	CONSTRUCTEUR	TYPE	LOWARA CODE	CARACT TECHNIQUES
QTY	QTY	DESCRIPTION	CONSTRUCTEUR	TYPE	LOWARA CODE	TECHNISCHEN DATEN
QTY	QTY	DESCRIPTION	CONSTRUCTOR	TYYPPI	LOWARA CODE	DATOS TECNICOS
QTY	QTY	DESCRIPTION	VALMISTAJA		LOWARA CODE	DAOS TECNICOS
QTY	QTY	DESCRIPTION			LOWARA CODE	TEKNISETTIEDOT
AP2	1	SCHEDELETRONICA ELECTRONICS CARD CARTE ELECTRONIQUE ELEKTRONISCHEN PLATINE TARJETA ELECTRONICA PLACA ELECTRONICA PIIRKORTTI	LOWARA	A128	160989500	24V 50060Hz
AP4	1	SCHEDELETRONICA ELECTRONICS CARD CARTE ELECTRONIQUE ELEKTRONISCHEN PLATINE ELEKTRONISCHEN KARTI TARJETA ELECTRONICA PLACA ELECTRONICA PIIRKORTTI	LOWARA	R188	150989470	12V 50060Hz
SV	1	CONMUTATOREVOLTMETRICO VOLTAGE SWITCH COMMUTATEUR DE TENSION UMSCHALTER VOLTOMZETTER CONMUTADOR VOLTIMETRICO COMUTADOR DE TENSÃO VIRRAKKÄÄNNIN	LOWATO	GX18 87 US1	002881000	500V
PV	1	VOLTMETRO VOLTMETRE VOLTMETRE SPANNUNGSMESSER VOLTMETER VOLTMETRO VOLTMETRO JÄNNITEMITTÄRI	FRER		002890109	500V



ITT

Lowara

Dr.w. N. **QFY0002A0**
 CAD **SPAC**
 File Name **QFY0002A0.dwg**
 Date **16/03/2007**

REV: **C**
 ECON: **08/245**

Plant
QFY/40..370
 Denomination
**DISTINTA MATERIALI
 SPARE PARTS**

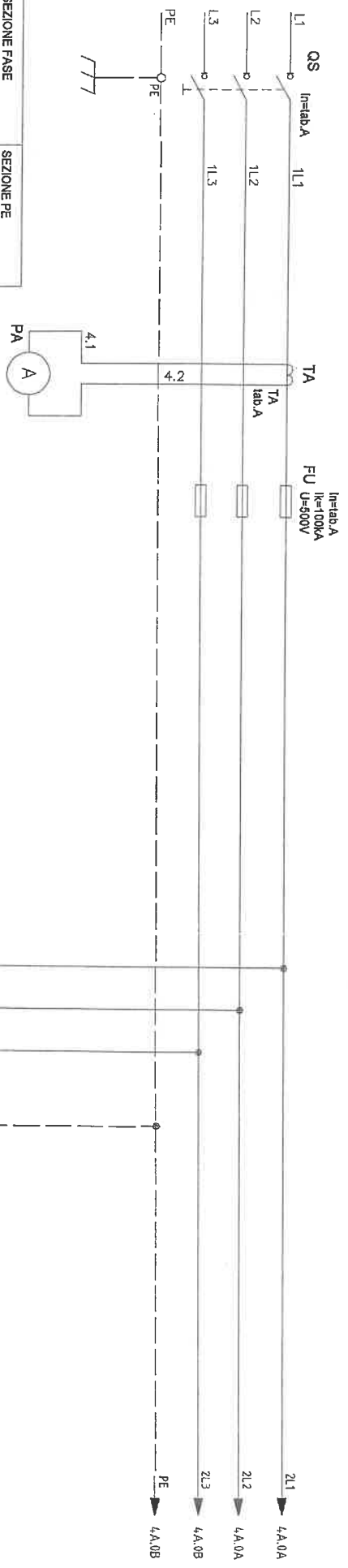
DRAW
 A.D.
 CHECKED
 M.R.
 APPROVED
 A.V.

REPLACED
 REPLACES
 rev B

SHEET
3A
 NEXT
4

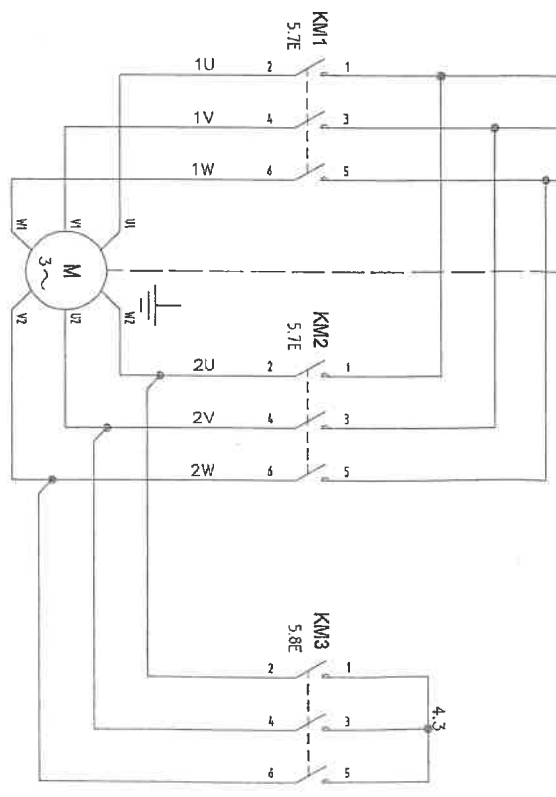
EXCLUSIVE PROPERTY OF LOWARA Srl. ACCORDING TO LAW THIS DRAWING CANNOT BE REPRODUCED OR DISTRIBUTED UNLESS AUTHORIZED IN WRITING BY LOWARA Srl

SEZIONE FASE PHASE SECTION SECTION DE PHASE PHASE ABSCHNITT DE SECTIE VAN DE FASE SECCIÓN DE FASE SEÇÃO DE FASE	SEZIONE PE PE SECTION SECTION DE PE PE ABSCHNITT DE SECTIE VAN DE PE SECCIÓN DE PE SEÇÃO DE PE
S ≤ 16	S
16 < S ≤ 35	16
35 < S ≤ 400	S/2
400 < S ≤ 800	200
S > 800	S/4



Tab. A

QUADRO ELETTRICO CONTROL BOX COFFRET ELECTRIQUE SCHALTTAFEL SCHAKELKAST CUADRO DE MANDO QUADRO ELECTRICO SAHKOTAVULU	POTENZA POWER PUISSANCE LEISTUNG VERMOGEN POTENCIA CORRENTE POTENCIA TEHO	CORRENTE CURRENT COURANT STROOM STROOM CORRENTE CORRENTE VIRTA	QS In (A)	QS (A-AC23A)	QS (mm2)	QS (Iew 1s-A)	TA/PA (A/S)	FU (A)	KM1-2 (A)	KM3 (A)	KM1-2 max S (mm2)	Tc1 (VA)	FU1 (A all)	FU2 (A gG)
QFY..440	4	12	23	10	500	30	25A gG	9	9	4	180	1	8	
QFY..455	5,5	16	23	10	500	30	25A gG	9	9	4	180	1	8	
QFY..465	7,5	20	23	10	1000	30	25A gG	12	9	4	180	1	8	
QFY..475	9,2	25	45	35	1000	50	32A gG	16	9	4	180	1	8	
QFY..482	11	30	45	35	1500	50	40A gG	25	12	4	180	1	8	
QFY..1110	15	40	75	50	1500	50	50A gG	25	12	4	180	1	8	
QFY..1150	18,5	50	75	50	1500	100	63A gG	25	16	6	180	1	8	
QFY..1185	22	60	80	70	1500	100	80A gG	32	16	10	180	1	8	
QFY..1220	30	80	80	70	1500	100	80A gG	40	25	10	180	1	8	
QFY..1300	37	100	90	95	1500	100	100A gG	50	32	35	250	2	10	
QFY..1370	45	120	125	95	1500	150	125A gG	65	32	35	250	2	10	
QFY..1450	55	140	160	95	1500	150	160A gG	75	37	35	250	2	10	



ITT

Lowara

Draw. N. **QFY0002A0**
CAD **SPAC**

REV. **C**
ECN: **08/245**

Plant
Denomination
QFY/40..370
SCHEMA DI POTENZA
POWER DIAGRAM

DRAW
A.D.
CHECKED
M.R.
APPROVED
A.V.

REPLACED
REPLACES
rev B

SHEET
4
NEXT
4A

EXCLUSIVE PROPERTY OF LOWARA Srl. ACCORDING TO LAW THIS DRAWING CANNOT BE REPRODUCED OR DISTRIBUTED UNLESS AUTHORIZED IN WRITING BY LOWARA Srl



ITT

Lowara

Draw. N. **QFY0002A0**
 CAD **SPAC**
 File Name QFY0002A0.dwg
 Date 16/03/2007

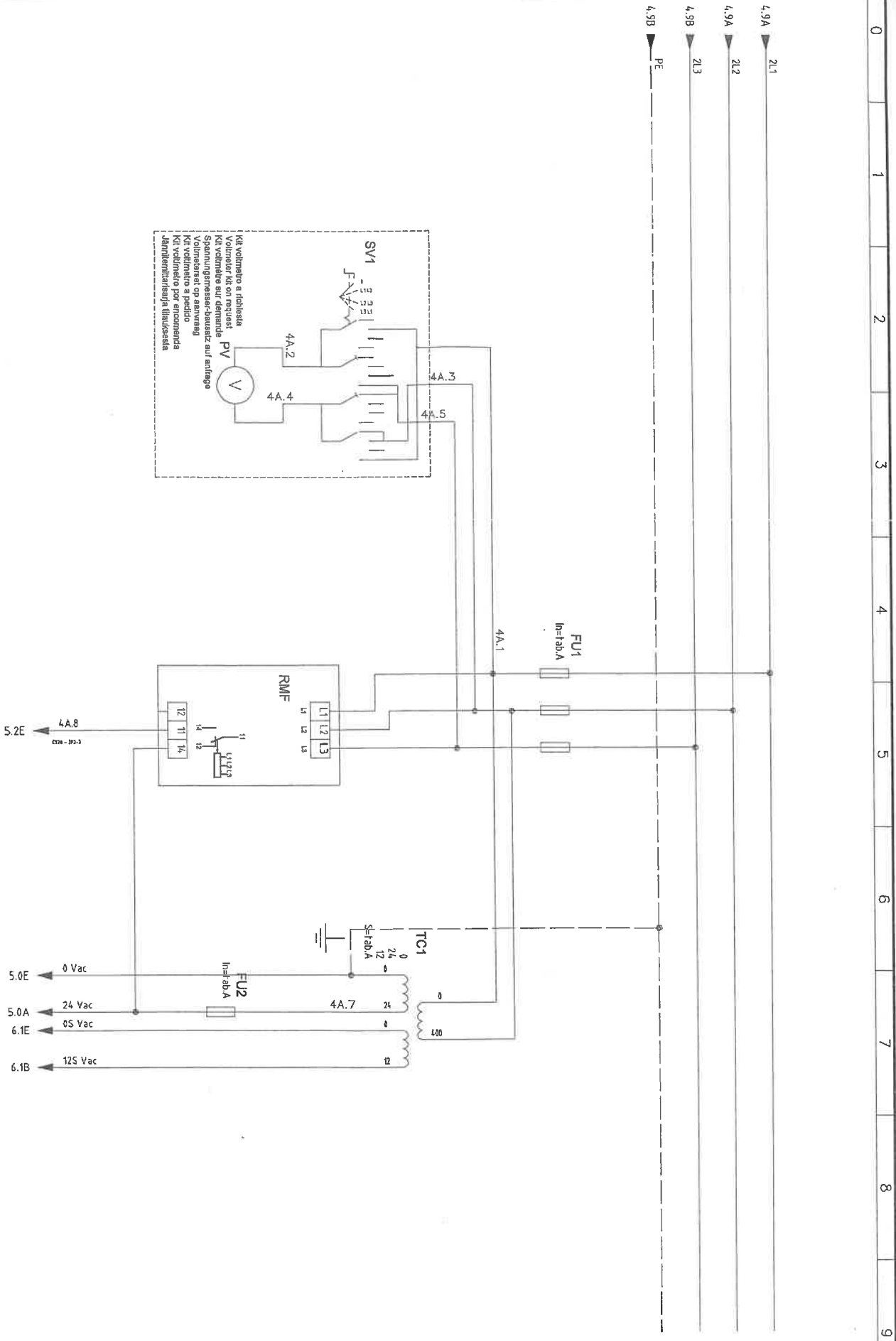
REV: **C**
 CON: **08/245**

Plant **QFY/40..370**
 Denomination **SCHEMA DI POTENZA
 POWER DIAGRAM**

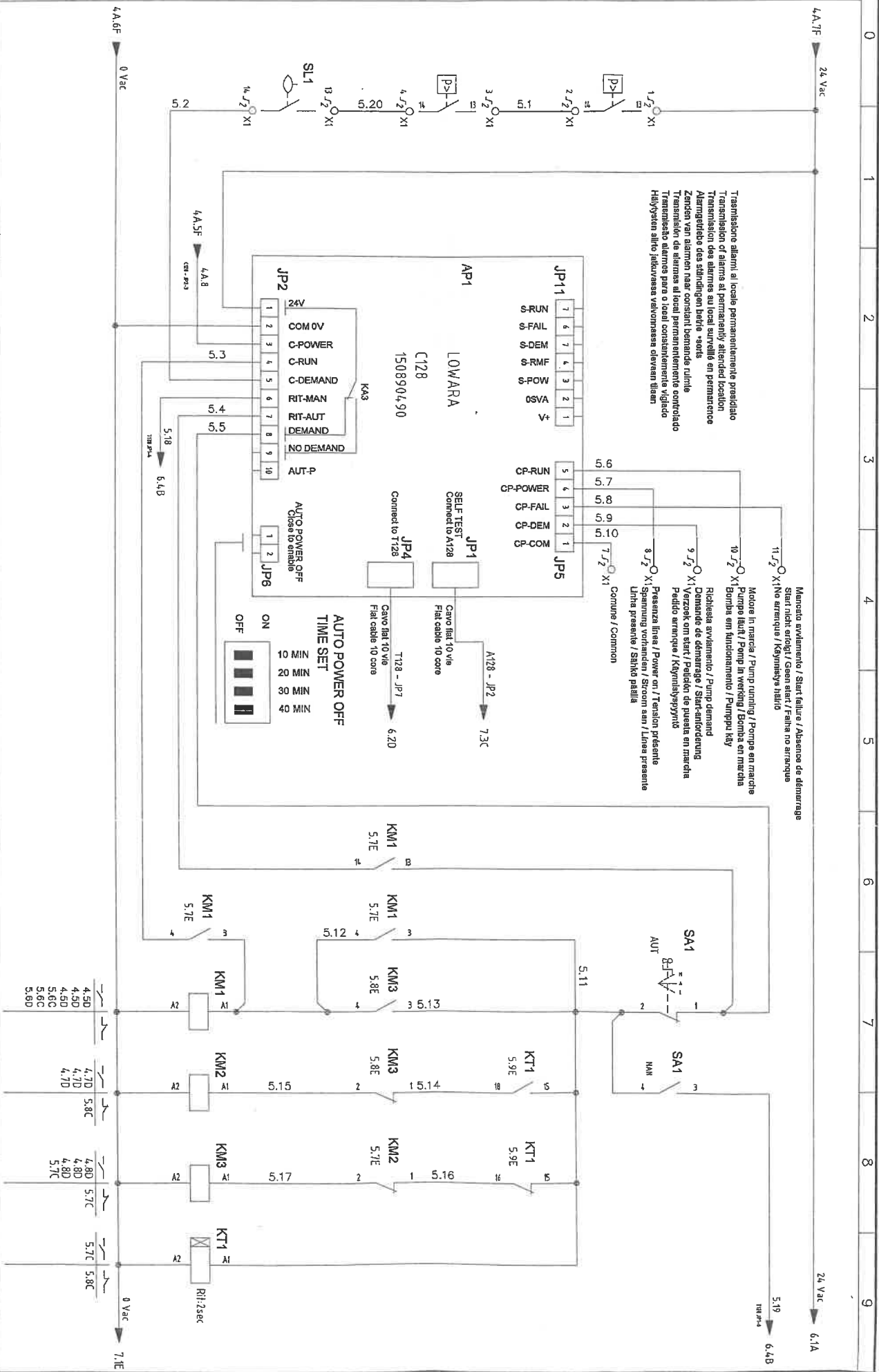
DRAW A.D.
 CHECKED M.R.
 APPROVED A.V.

REPLACED
 REPLACES rev B

SHEET **4A**
 NEXT **5**



0 1 2 3 4 5 6 7 8 9



Trasmisione allarmi al locale permanentemente presidiato
 Transmission of alarms at permanently attended location
 Transmisión de alarmas al local supervillado en permanente
 Alarms transmitted from the continuously attended location
 Zvonění van alarmen naar constant bewaarde locatie
 Transmisión de alarmas al local permanentemente controlado
 Transmission of alarms from a permanently attended location
 Hätäviestien siirto paikallisesta valvonnasta ohjattuun tilaan

Mancato avviamento / Start failure / Absence de démarrage
 Start nicht erfolgt / Green start / Falha no arranque
 Start nicht erfolgt / Kéknyelvény hiány

Motore in marcia / Pump running / Pompe en marche
 Pumpe läuft / Pump in werking / Bomba em marcha
 Bomba em funcionamento / Pumpu káží
 Richiesta avviamento / Pump demand
 Demande de démarrage / Start-aanroeding
 Pedido com start / Pedido de puesta en marcha
 Pedido arranque / Käynnätysoyhto
 9 J2 X1: Presença linha 4 / Power on / Tension présente
 8 J2 X1: Spannung vorhanden / Strom an / Linna presente
 Linha presente / Sähkö päällä
 Comune / Common



ITT

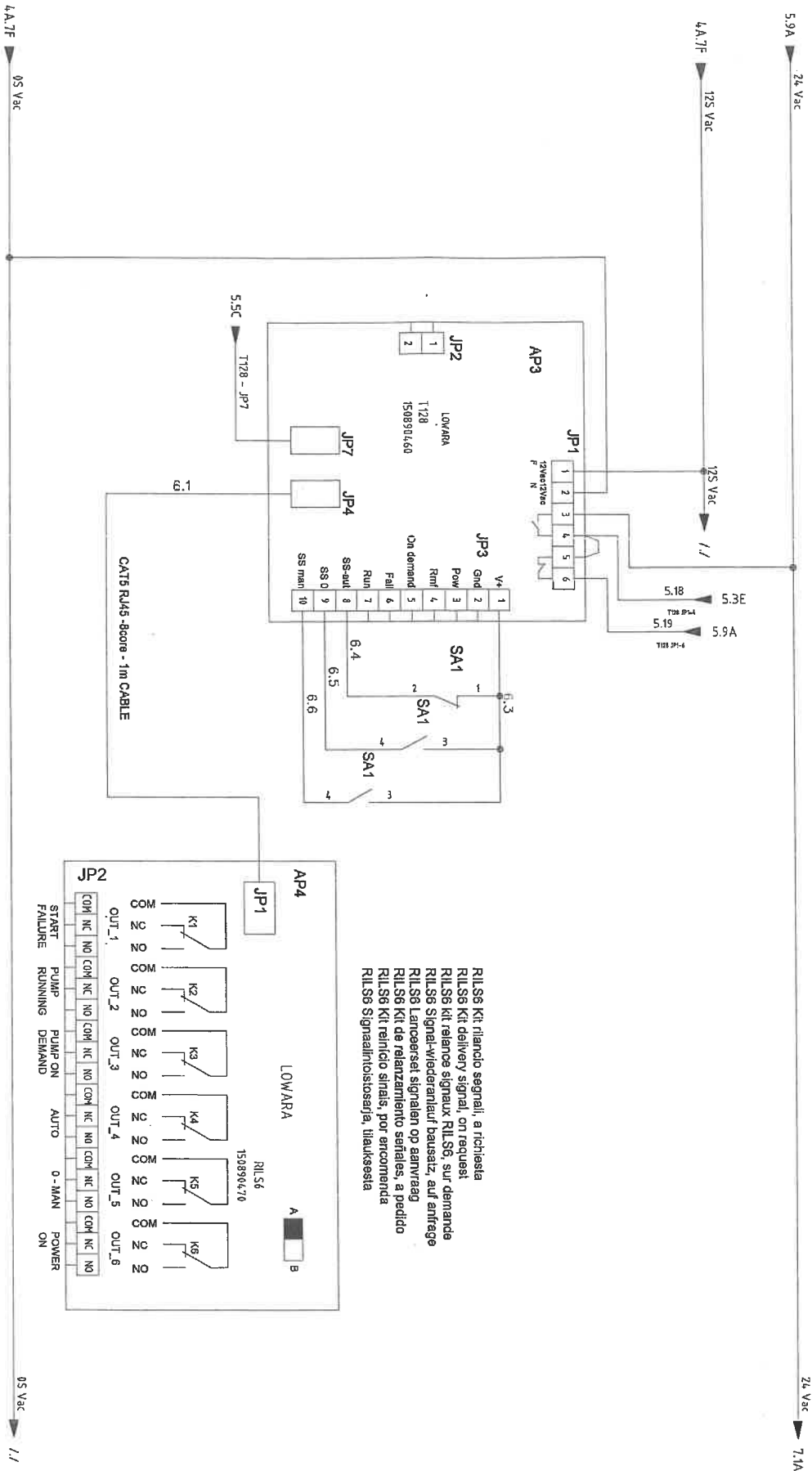
Lowara

Drwg. N.	QFY0002A0
CAD	SPAC
File Name	QFY0002A0.dwg
Date	16/03/2007

REV.	C
ECN:	08/245

Plant	QFY/40..370
Denomination	SCHEMA AUSILIARI AUXILIARY DIAGRAM

DRAW	A.D.	REPLACED	SHEET
CHECKED	M.R.	REPLACES	5
APPROVED	A.V.	rev B	NEXT
			6



RILS6 Kit rilancio segnalii, a richiesta
 RILS6 Kit delivery signal, on request
 RILS6 Kit relance signaux RILS6, sur demande
 RILS6 Signal-wiederentwurf baupatz, auf anfrage
 RILS6 Lancoerset signalen op aanvraag
 RILS6 Kit de relanzamiento señales, a pedido
 RILS6 Kit reinicio sinais, por encomenda
 RILS6 Signaallintstoeserje, tilauksesista



ITT

Lowara

Draw: N. QFY0002A0
 CAD: SPAC
 File Name: QFY0002A0.dwg
 Date: 16/03/2007

REV: C
 ECN: 08/245

Plant
 Denomination

QFY/40..370
 SCHEMA AUSILIARI
 AUXILIARY DIAGRAM

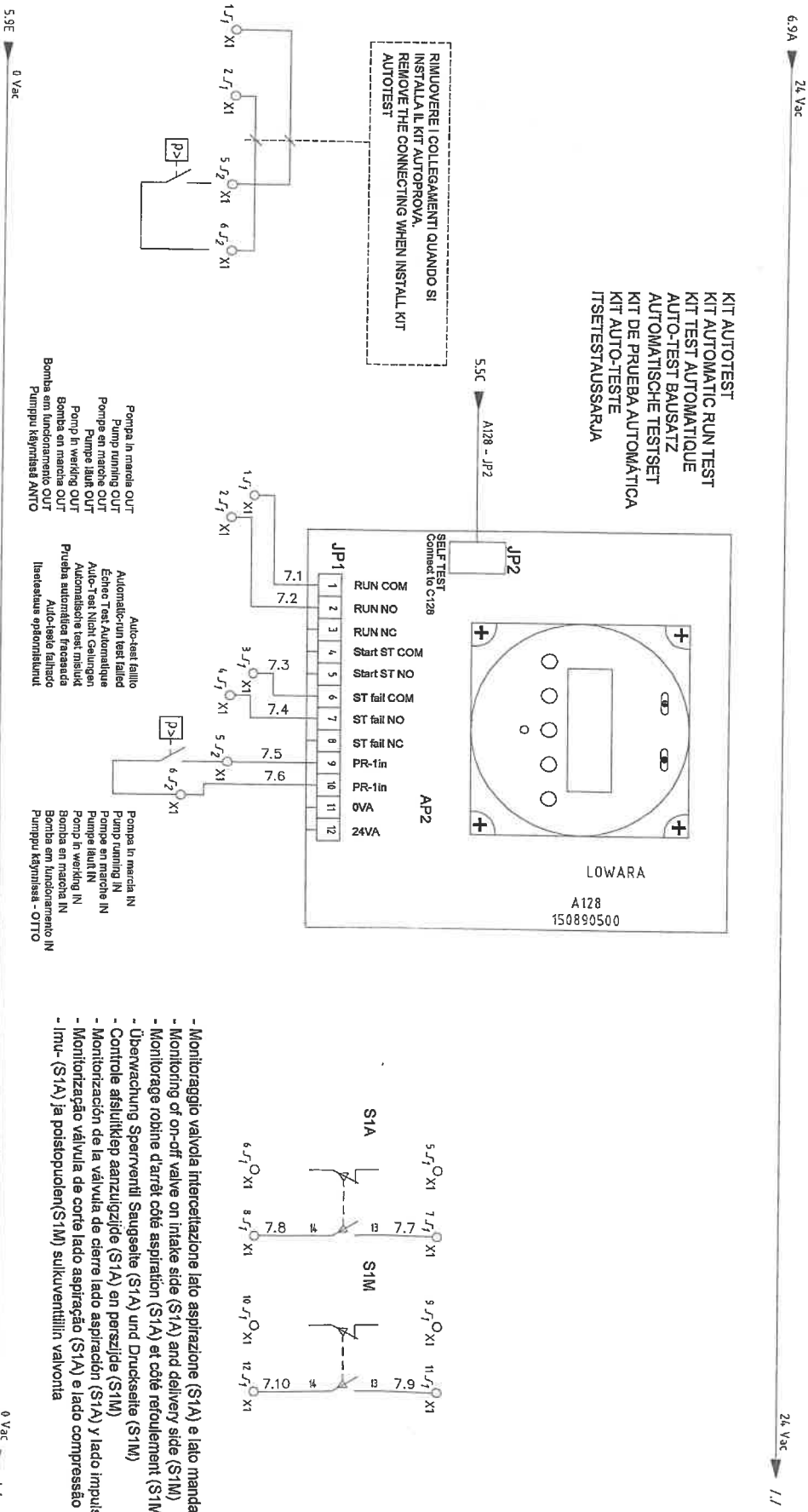
DRAW A.D.
 CHECKED M.R.
 APPROVED A.V.

REPLACED
 REPLACES rev B

SHEET 6
 NEXT 7

KIT AUTOTEST
KIT AUTOMATIC RUN TEST
KIT TEST AUTOMATIQUE
AUTO-TEST BAUSATZ
AUTOMATISCHE TESTSET
KIT DE PRUEBA AUTOMÁTICA
KIT AUTO-TESTE
ITSETESTAUSSARJA

RIMUOVERE I COLLEGAMENTI QUANDO SI
INSTALLA IL KIT AUTOTEST.
REMOVE THE CONNECTING WHEN INSTALL KIT
AUTOTEST



Pompa in marcia OUT
Pump running OUT
Pompe en marche OUT
Pumpe läuft OUT
Pomp in working OUT
Bomba em funcionamento OUT
Pumppu käynnissä AVTO

Auto-test failed
Automatic-run test failed
Echec Test Automatique
Auto-Test Nicht Gelingen
Automatiseel test misluk
Prueba automática fracasada
Auto-teste falhasido
Ilmestaus epäonnistunut

Pompa in marcia IN
Pump running IN
Pompe en marche IN
Pumpe läuft IN
Pomp in working IN
Bomba em funcionamento IN
Pumppu käynnissä - OTTO

- Monitoraggio valvola intercettazione lato aspirazione (S1A) e lato mandata (S1M)
- Monitoring of on-off valve on intake side (S1A) and delivery side (S1M)
- Monitoring of on-off valve on intake side (S1A) et côté refoulement (S1M)
- Überwachung Sperventil Saugseite (S1A) und Druckseite (S1M)
- Controle afsluikklep aanzuigzijde (S1A) en perszijde (S1M)
- Controlización de la válvula de cierre lado aspiración (S1A) y lado impulsión (S1M)
- Monitorização válvula de corte lado aspiração (S1A) e lado compressão (S1M)
- Ilmu- (S1A) ja polstojuolen(S1M) sulkuventtiin valvonta

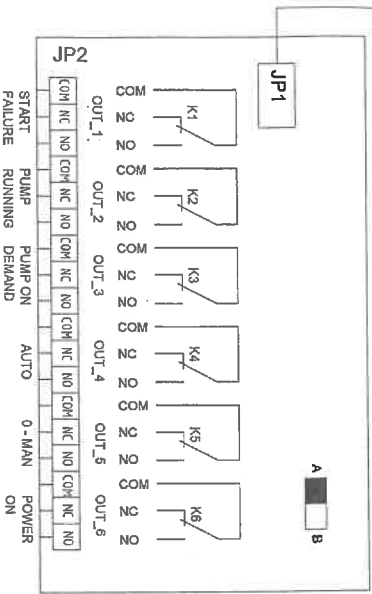
Lowara

Draw. N. QFY0002A0	REV. C	Plant
CAD SPAC	EN: 08/245	QFY/40..370
File Name QFY0002A0.dwg		Denomination
Date 16/03/2007		SCHEMA AUSILIARI AUXILIARY DIAGRAM
	DRAW A.D.	REPLACED
	CHECKED M.R.	REPLACES rev B
	APPROVED A.V.	
		SHEET 7
		NEXT 8

KIT OPZIONALE
OPTIONAL KIT
KIT OPTIONNEL
ZUBERHÖR
OPTIONELE SET
KIT OPTIONAL
TILALTAVA SARJUA

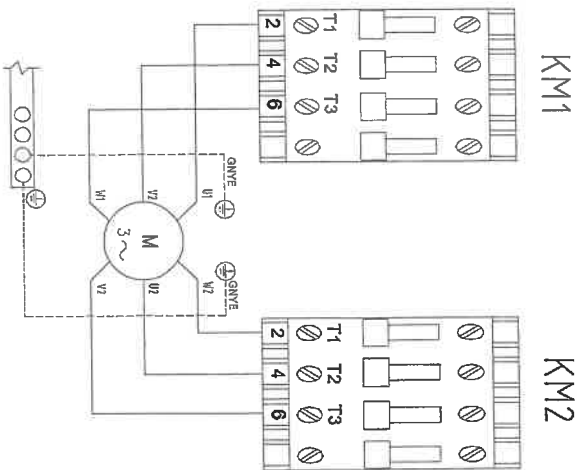
Collegare a scheda T128
Connect to T128 card
Connecter à carte T128
Anschlusskarte T128
Op printplaat T128 aansluiten
Conectar a la tarjeta T128
Ligir à placa T128
Liitä korttiin T128

CONTATTI PULITI
FREE VOLTAGE CONTACTS
CONTACTS SANS POTENTIEL
SPANNUNGSKONTAKTE
SGHONE CONTACTEN
CONTACTOS LIMPIOS
POTENTIALVAPAAAT
KOSKETTIMET
1A @ 280V



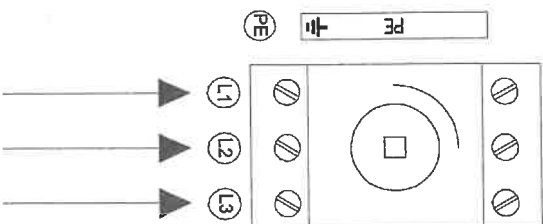
OUT_1: Mancato avviamento / Start failure / Absence de démarrage / Start nicht erfolgt
 Geen start / Falha no arranque / No arranque / Käynnistys häiriö
OUT_2: Pompa in marcia / Pump running / Pompe en marche / Pumpe läuft
 Pump in working / Bomba em marcha / Bomba em funcionamento / Pumpu käy
OUT_3: Richiesta avviamento / Pump demand / Demande de démarrage / Start-anforderung
 Verzoek om start / Pedido de puesta en marcha / Pedido arranque / Käynnistyspyyntä
OUT_4: Selezione in AUTO / Selector on AUTO / Sélecteur sur AUTO / Wählschalter auf AUTO
 Keuzeschakelaar op auto / Selector en AUTO / Sélecteur em AUTO / Vaihelin auto-asennossa
OUT_5: Selezione in 0 MAN / Selector on 0 or MAN / Sélecteur sur AUTO / Wählschalter auf 0 oder MAN
 Keuzeschakelaar op 0 of man / Selector en 0 or MAN / Sélecteur em 0 ou MAN
OUT_6: Presenza linea / Power on / Tension présente / Spannung vorhanden / Stroom aan
 Linha presente / Linha presente / Sähkö päällä

MOTORE POMPA
MOTOR PUMP
MOTEUR POMPA
MOTORPUMPE
POMP/MOTO
MOTOR BOMBA
PUMPUN MOOTTORI



LINEA ELETTRICA
POWER SUPPLY
LIÈNE D'ALIMENTATION
NETZANSCHLUSS
STROOMTOEVOERLIJN
LÍNEA ELÉCTRICA
LINHA ELÉCTRICA
SÄHKÖVERKKO

400V 50/60Hz



Draw. N. **QFY0002A0**

REV. **C**
EQU. **08/245**

Plant **QFY/40..370**

DRAW A.D.

REPLACED

SHEET **8**

CAD **SPAC**

Denomination **MORSETTERIA E CONNESSIONI**
TERMINALS & CONNECTIONS

CHECKED M.R.

REPLACES rev B

NEXT **9**

File Name **QFY0002A0.dwg**

TERMINALS & CONNECTIONS

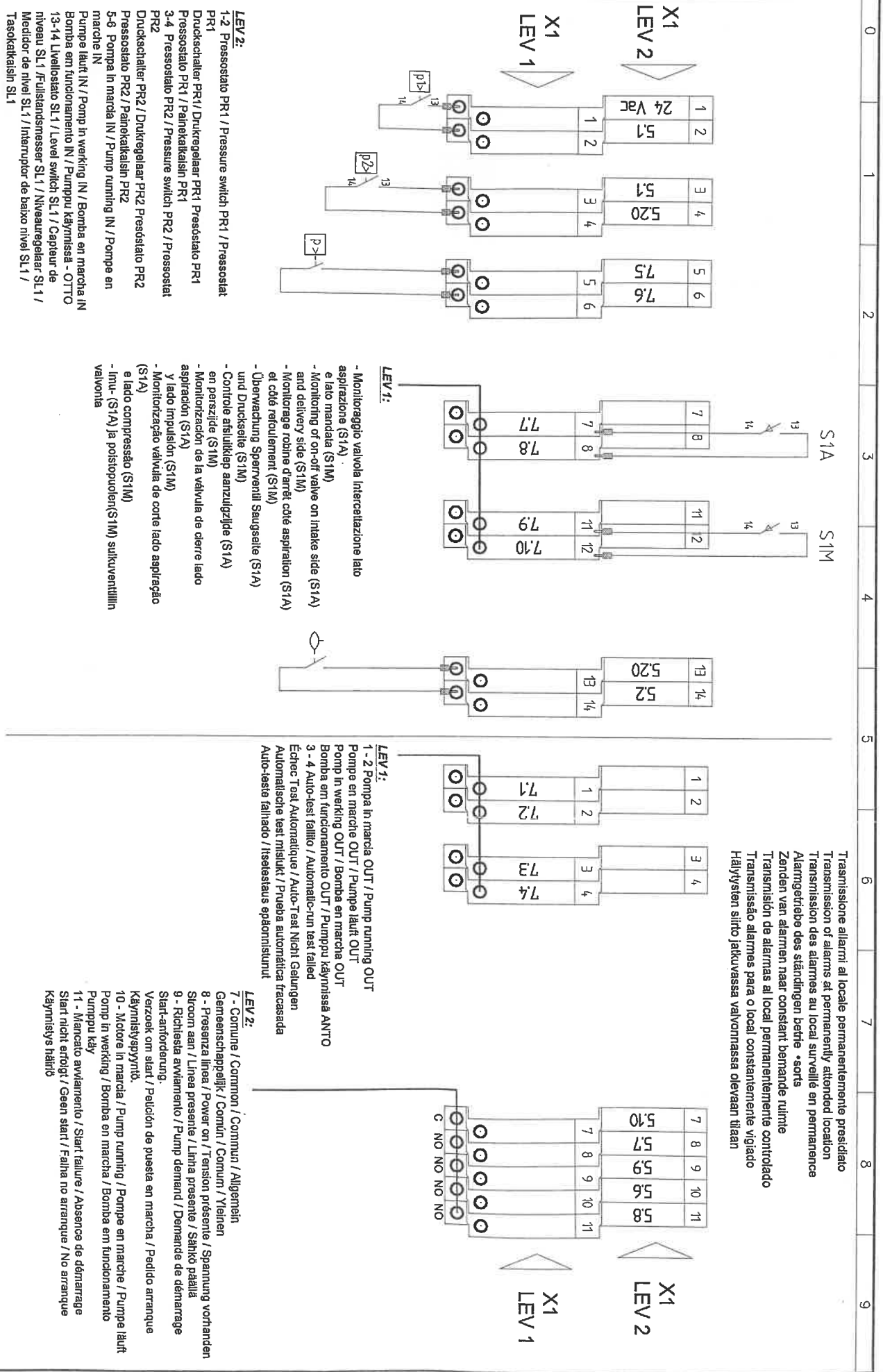
APPROVED A.V.



ITT

Lowara

Date **16/03/2007**



LEV 2:
 1-2 Pressostato PR1 / Pressure switch PR1 / Pressostat PR1
 Druckschalter PR1 / Drukregelaar PR1 Pressostato PR1
 Pressostato PR1 / Painekatkaisin PR1
 3-4 Pressostato PR2 / Pressure switch PR2 / Pressostat PR2
 Druckschalter PR2 / Drukregelaar PR2 Pressostato PR2
 Pressostato PR2 / Painekatkaisin PR2
 5-6 Pompa in marcha IN / Pump running IN / Pompe en marche IN
 Pompa lauru IN / Pump in working IN / Bomba en marcha IN
 Bomba em funcionamento IN / Pumppu käynnissä - OTTO
 13-14 Nivellosato SL1 / Level switch SL1 / Capteur de niveau SL1 / Nivelstandsmesser SL1 / Niveauregelaar SL1 / Medidor de nivel SL1 / Interruptor de baixo nivel SL1 / Tasokatkaisin SL1

LEV 1:
 - Monitoraggio valvola intercettazione lato aspirazione (S1A) / eläio mandata (S1M)
 - Monitoring of on-off valve on intake side (S1A) and delivery side (S1M)
 - Monitoring robinet cöte aspiration (S1A) et cöte refoulement (S1M)
 - Überwachung Sperrventil Saugseite (S1A) und Druckseite (S1M)
 - Controle afsluitklep aanzuigzijde (S1A) en perszijde (S1M)
 - Montorizaciön de la válvula de cierre lado aspiraciön (S1A) y lado impulsión (S1M)
 - Montorizaciön válvula de corte lado aspiraciön (S1A) e lado compressão (S1M)
 - Inu- (S1A) ja poistopuolen(S1M) sulkuventtiilin valvonta

LEV 1:
 1 - 2 Pompa in marcha OUT / Pump running OUT
 Pompe en marche OUT / Pumpe lauru OUT
 Pump in working OUT / Bomba en marcha OUT
 Bomba em funcionamento OUT / Pumppu käynnissä ANTO
 3 - 4 Auto-testi faillo / Automatic-run test failed
 Echec Test Automatique / Auto-Test Nicht Gelingen
 Automatische test mislukt / Pruüba automática fracasada
 Auto-teste faillado / Itsestaus epäonnistunut

LEV 2:
 7 - Comune / Common / Commun / Allgemein
 Gemeenschappelijk / Common / Gemein / Yleinen
 8 - Presenza linea / Power on / Tension présente / Spannung vorhanden
 Stroon aan / Linha presente / Linha presente / Sähkö päällä
 9 - Richtiestia avviamento / Pump demand / Demande de démarrage
 Start-anforderung.
 Verzoek om start / Petición de puesta en marcha / Pedido arranque
 Käynnistyspyyntö.
 10 - Motore in marcha / Pump running / Pompe en marche / Pumpe lauru
 Pump in working / Bomba en marche / Bomba em funcionamento
 Pumppu käy
 11 - Mancato avviamento / Start failure / Absence de démarrage
 Start nicht erfolgt / Geen start / Falha no arranque / No arranque
 Käynnistys häiriö

Transmissiõne allarmi al locale permanentemente presidato
 Transmission of alarms at permanently attended location
 Transmissiõn des alarmes au local surveillé en permanence
 Alarmgerätee des ständlingen betrie • sorts
 Zenden van alarmen naar constant bemande ruimte
 Transmisión de alarmas al local permanentemente controlado
 Transmissãõ alarmes para o local constantemente vigiado
 Häilystien siitto jatkuvasassa valvonnassa olevaan tilaan



Draw. N. **QFY0002A0**
 CAD **SPAC**
 File Name QFY0002A0.dwg
 Date 16/03/2007

REV. **C**
 ECN. **08/245**
 Plant **QFY/40..370**
 Denomination **MORSETTERIA E CONNESSIONI TERMINALS & CONNECTIONS**

DRAW A.D.
 CHECKED M.R.
 APPROVED A.V.
 REPLACED
 REV B
 SHEET **9**
 NEXT /