

ALL. N. 9 DIVISIONE URBANISTICA ED EDILIZIA PRIVATA
 DIREZIONE URBANISTICA
 Prot. n. 3121 Data 24.7.2010
 TIT. 06 CL. 02 Fasc. 2/19
 ARRIVO

DIVISIONE URBANISTICA ED EDILIZIA PRIVATA
 IL DIRETTORE
 Dott.ssa Paola VIRANO
 CITTÀ DI TORINO

AREA DA TRASFORMARE PER SERVIZI
 AMBITO 4d CUNIBERTI

SETTORE TRASFORMAZIONI
 CONVENZIONATE
 Prot. Edilizio n° 229-11/16/18
 Data 30.7.2010

STUDIO UNITARIO D' AMBITO
 ex. art. 7 N.U.E.A. P.R.G.

proprietà

Sil S.p.A.
 via Monte Asolone n.4

progetto

Arch. Cesare Carbone
 via dei Mille 22, 10123 Torino
 T 011 8140224 fax 011 8140231
 cesarecarbone@gmail.com

oggetto

SOLUZIONE A - SOLUZIONE B
 TIPOLOGIE EDILIZIE INDICATIVE
 profili
 planivolumetrico

scala

1:1000
 1:2000

data

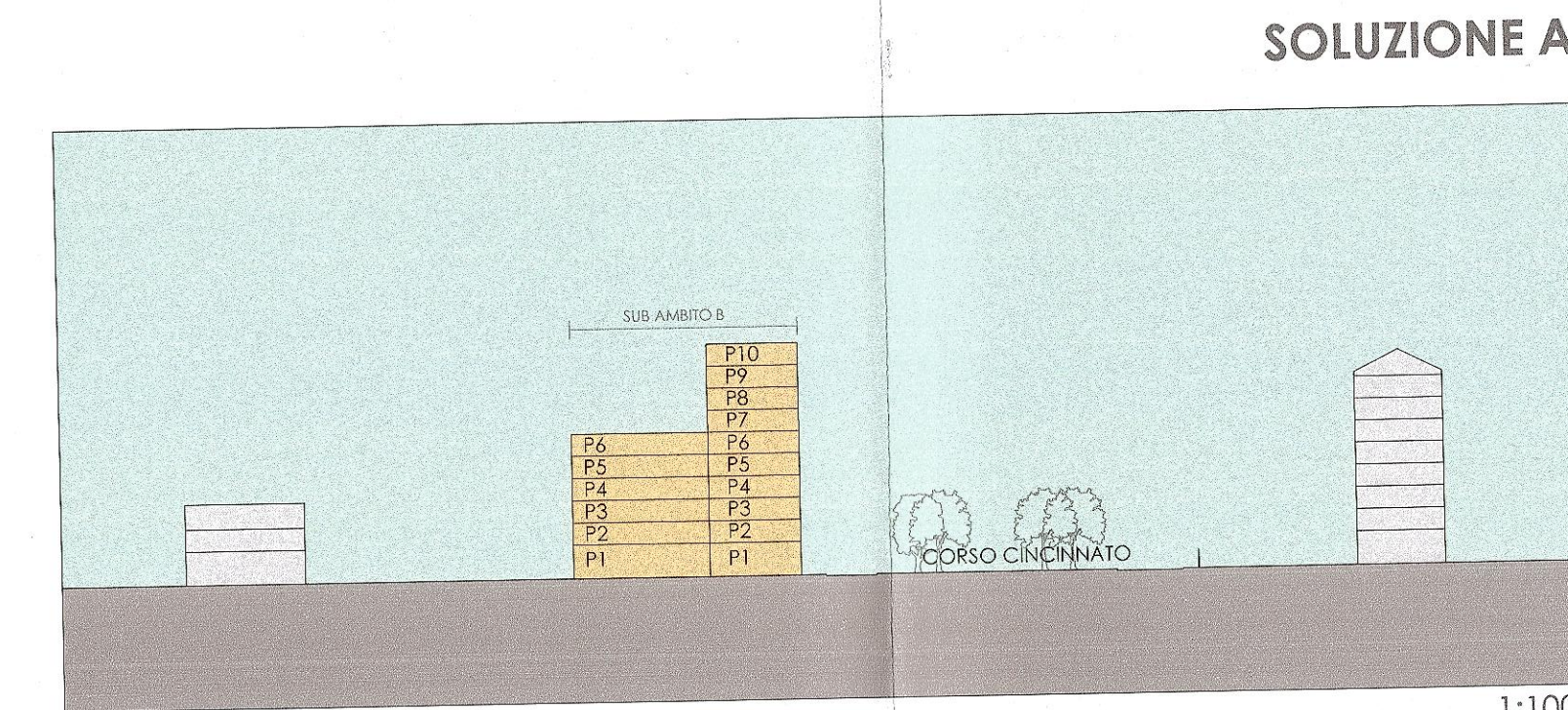
28.07.2010

06

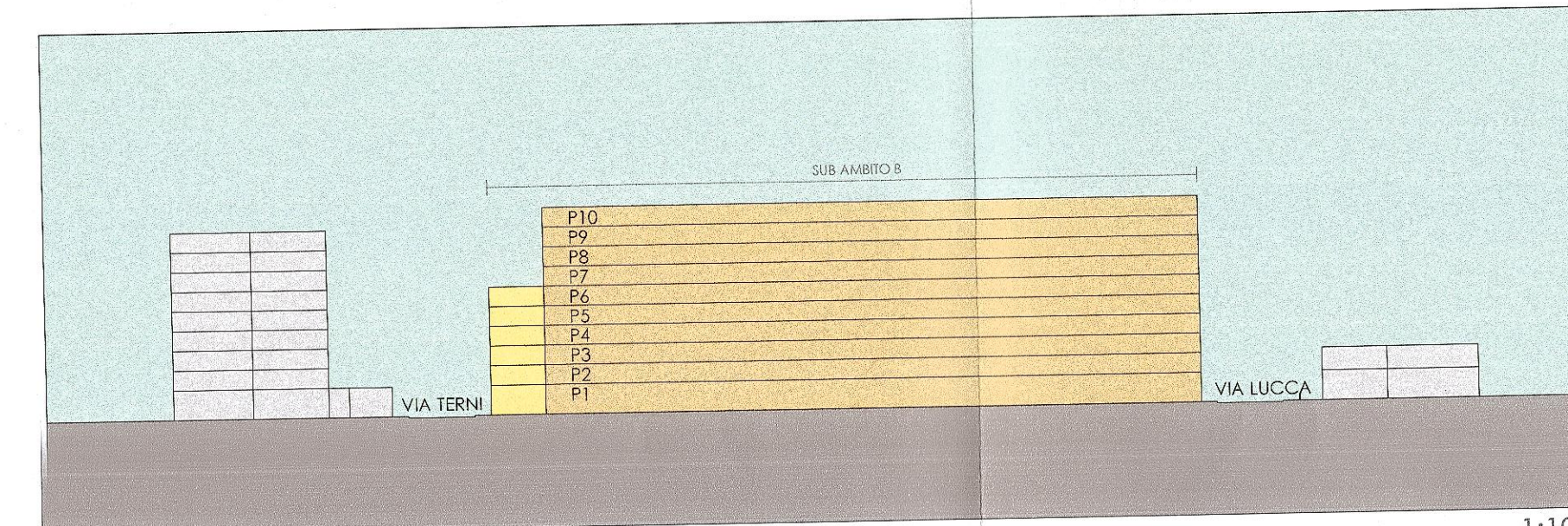
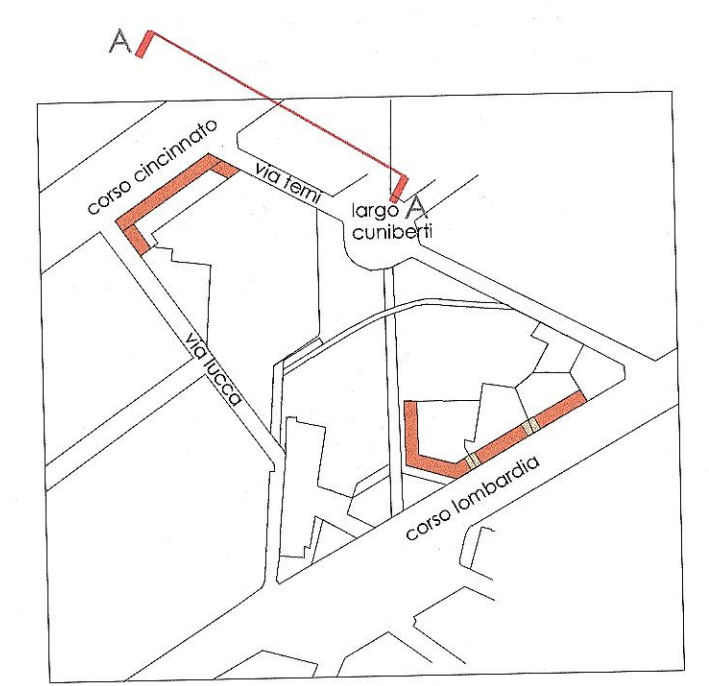
SOLUZIONE A



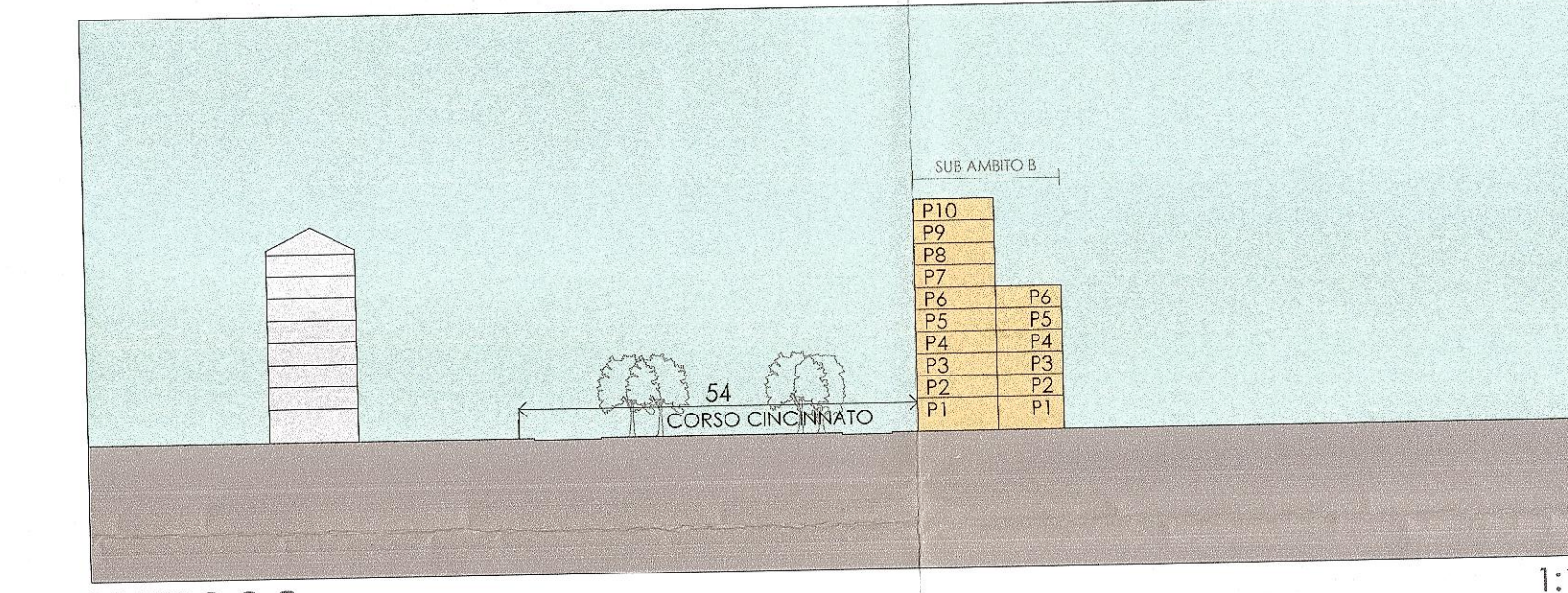
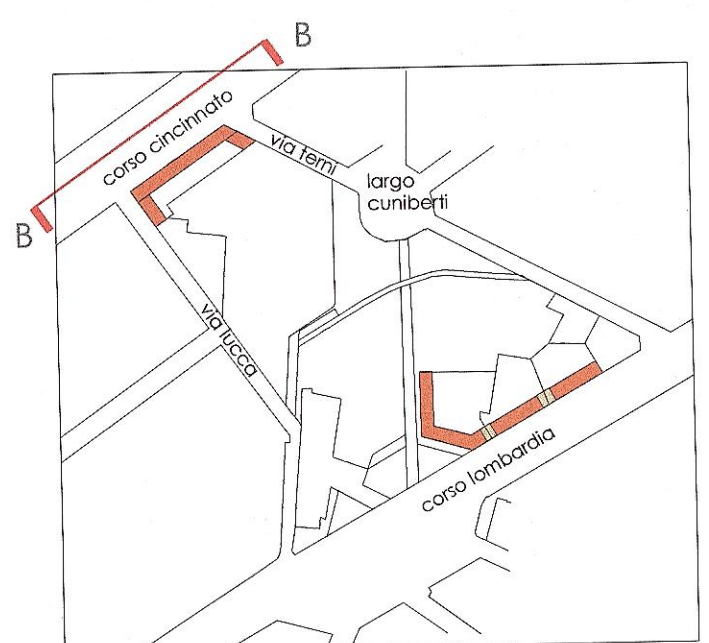
PLANIVOLUMETRICO DI PROGETTO 1:2000



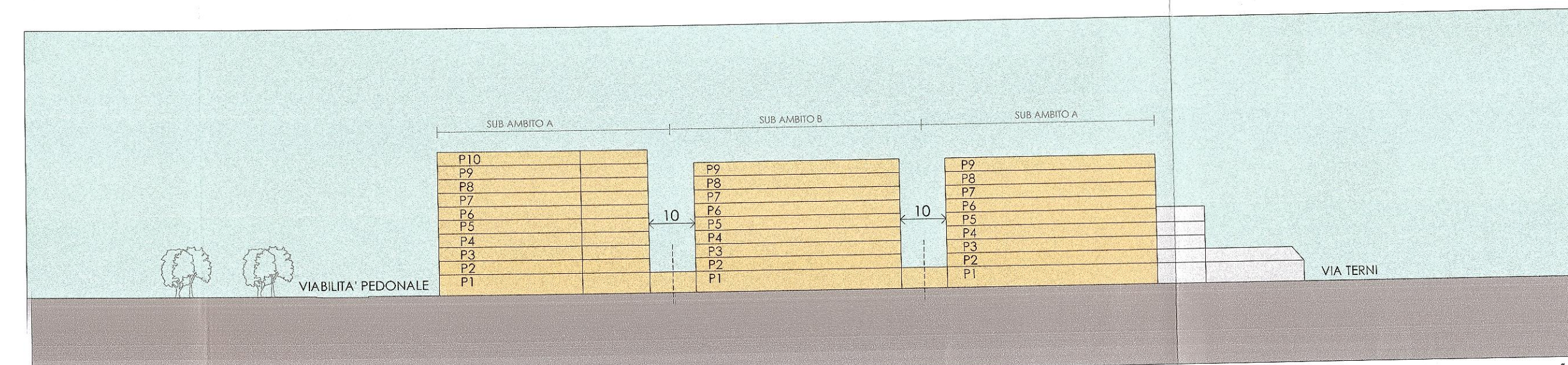
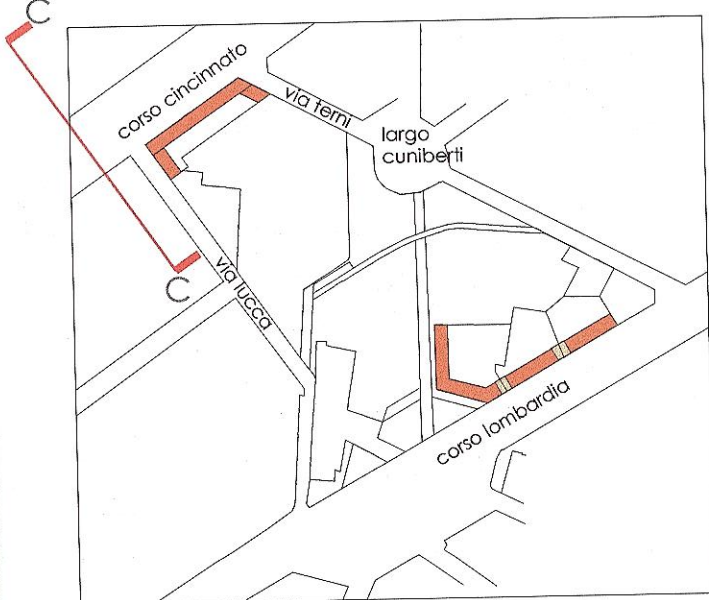
PROFILO A-A 1:1000



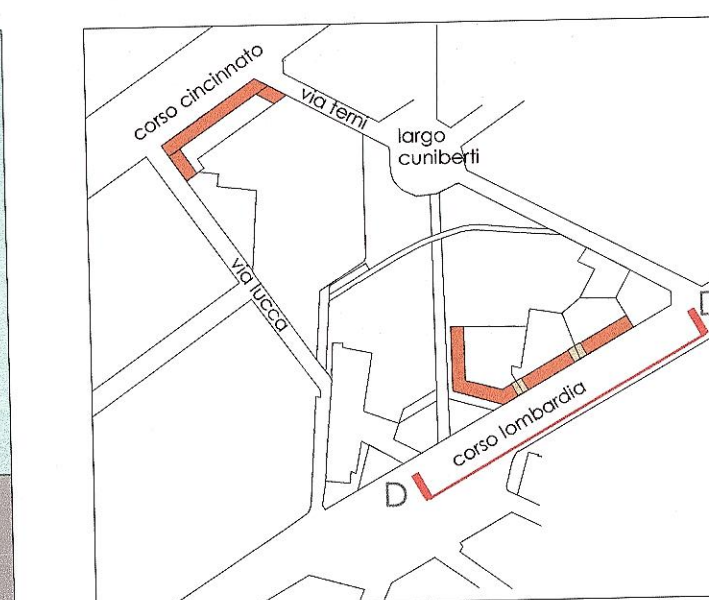
PROFILO B-B 1:1000



PROFILO C-C 1:1000



PROFILO D-D 1:1000

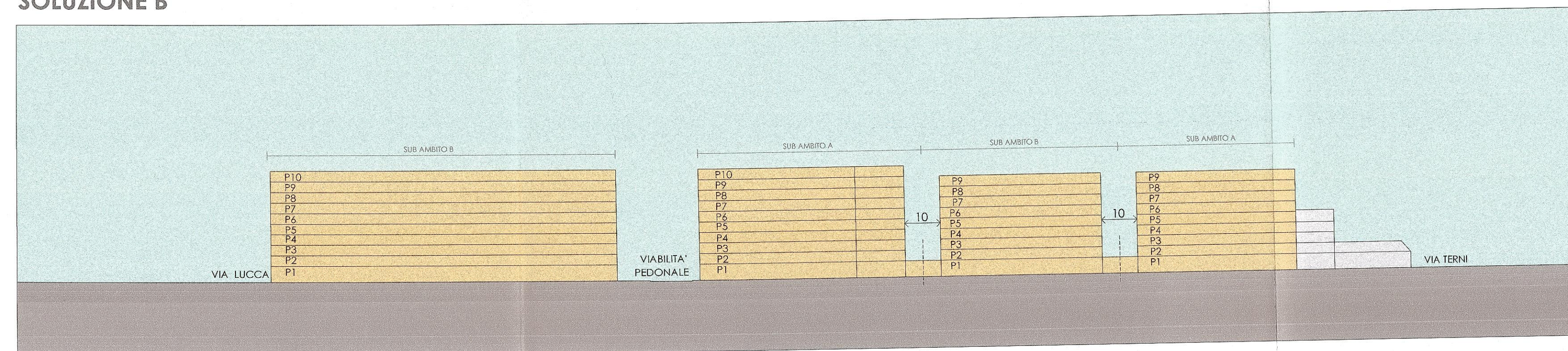


SOLUZIONE B



PLANIVOLUMETRICO DI PROGETTO 1:2000

SOLUZIONE B



PROFILO A-A 1:1000

