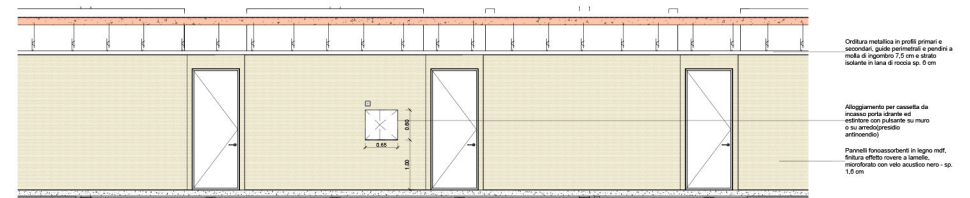
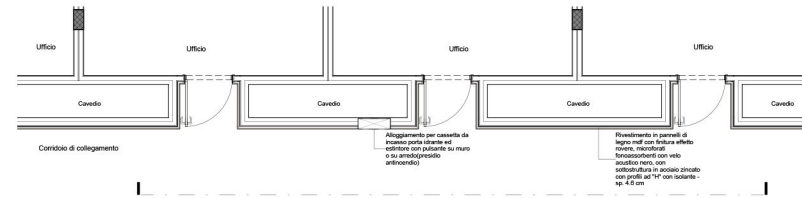
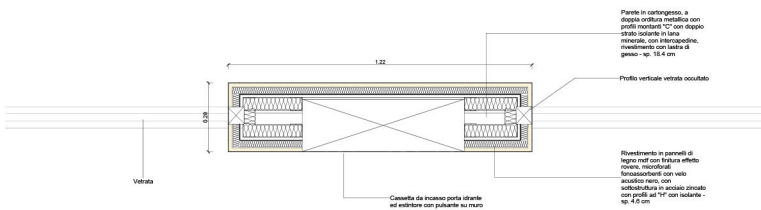
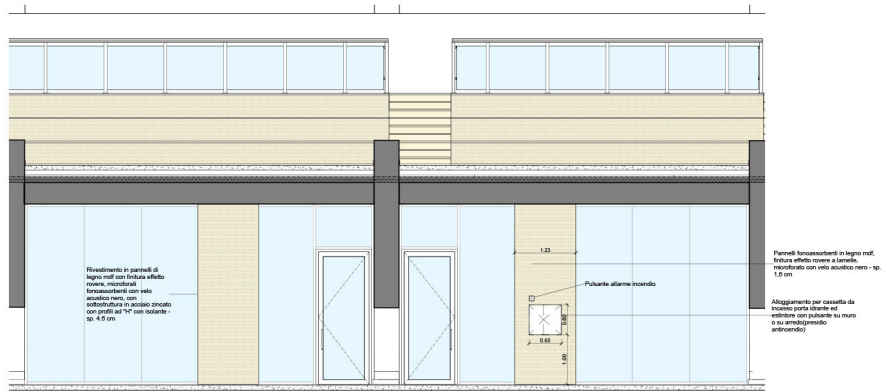
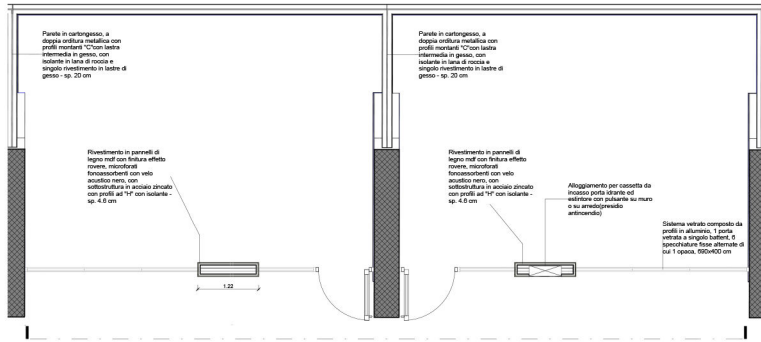
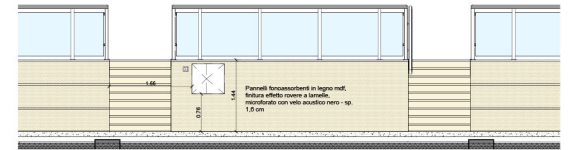
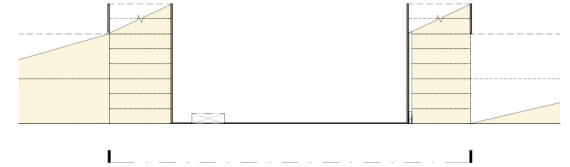
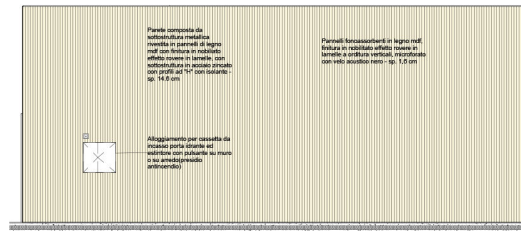
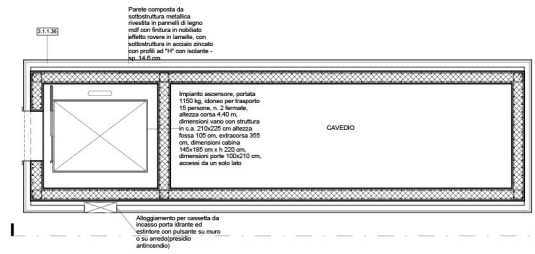
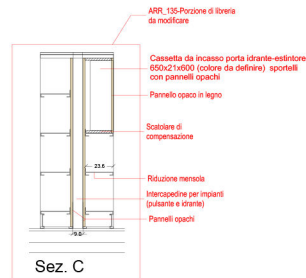
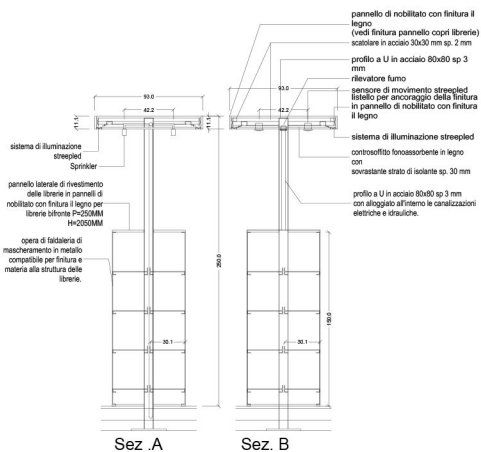
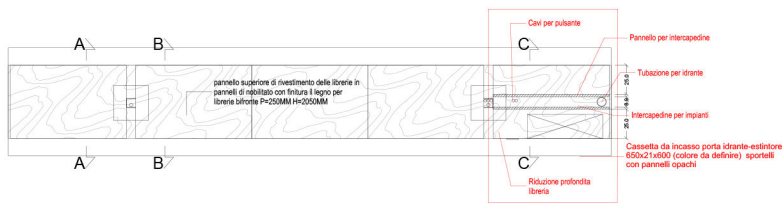
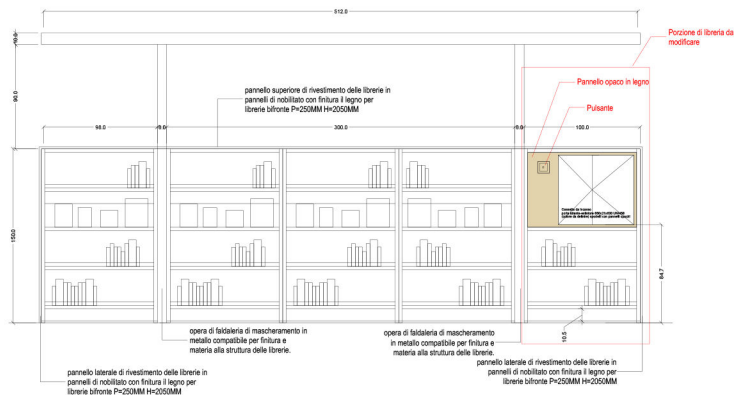


“TORINO, IL SUO PARCO, IL SUO FIUME: MEMORIA E FUTURO” REALIZZAZIONE DELLA BIBLIOTECA CIVICA E RIQUALIFICAZIONE DEL TEATRO NUOVO

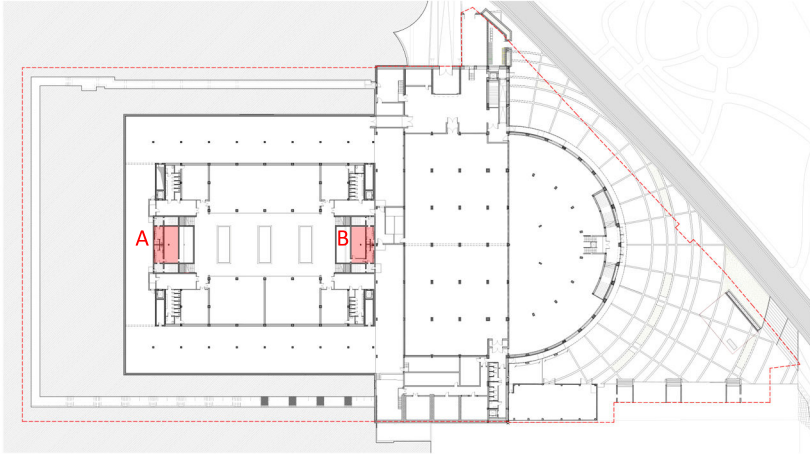
1A. PRESIDI ANTINCENDIO



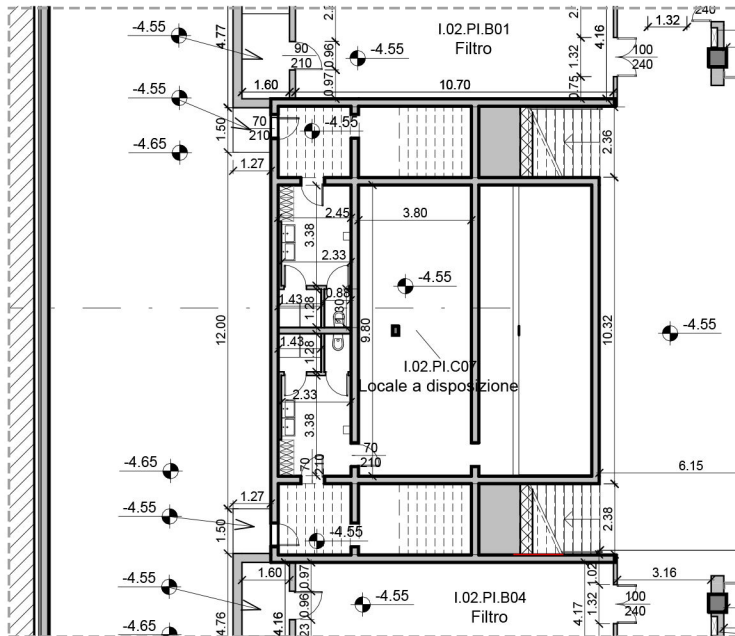
1B. PRESIDI ANTINCENDIO



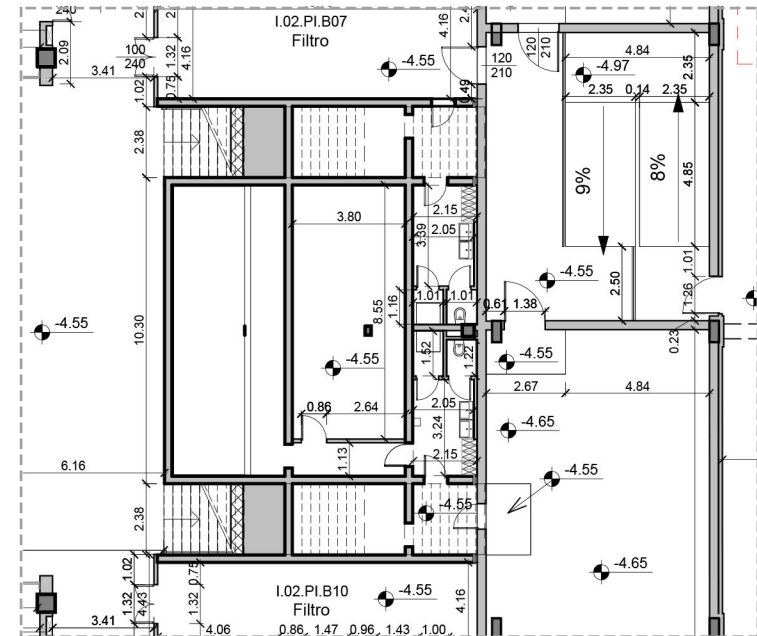
2. SPOGLIATOI



Navigatore

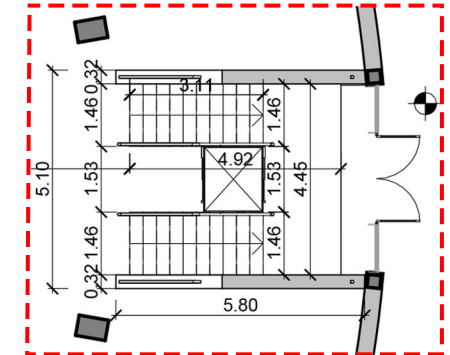
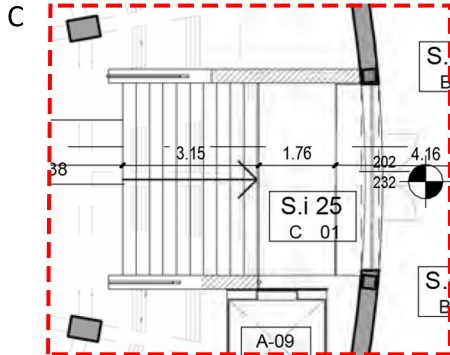
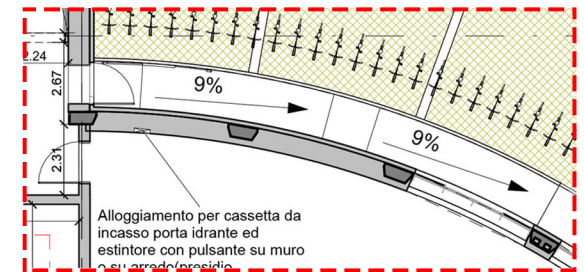
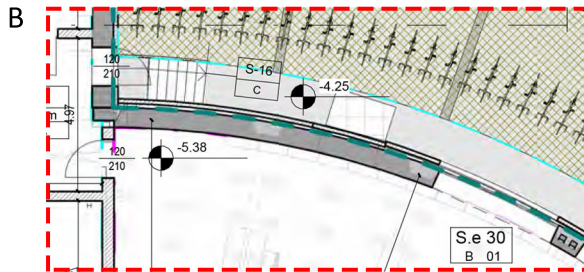
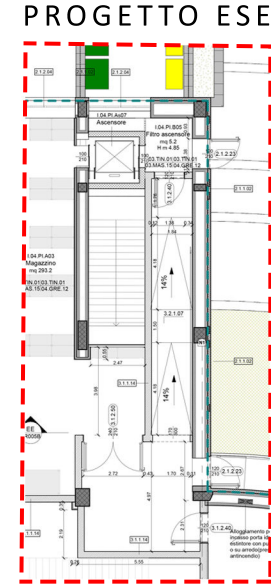
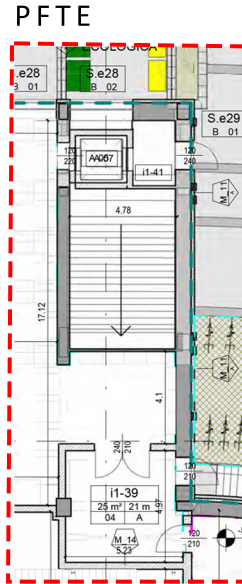
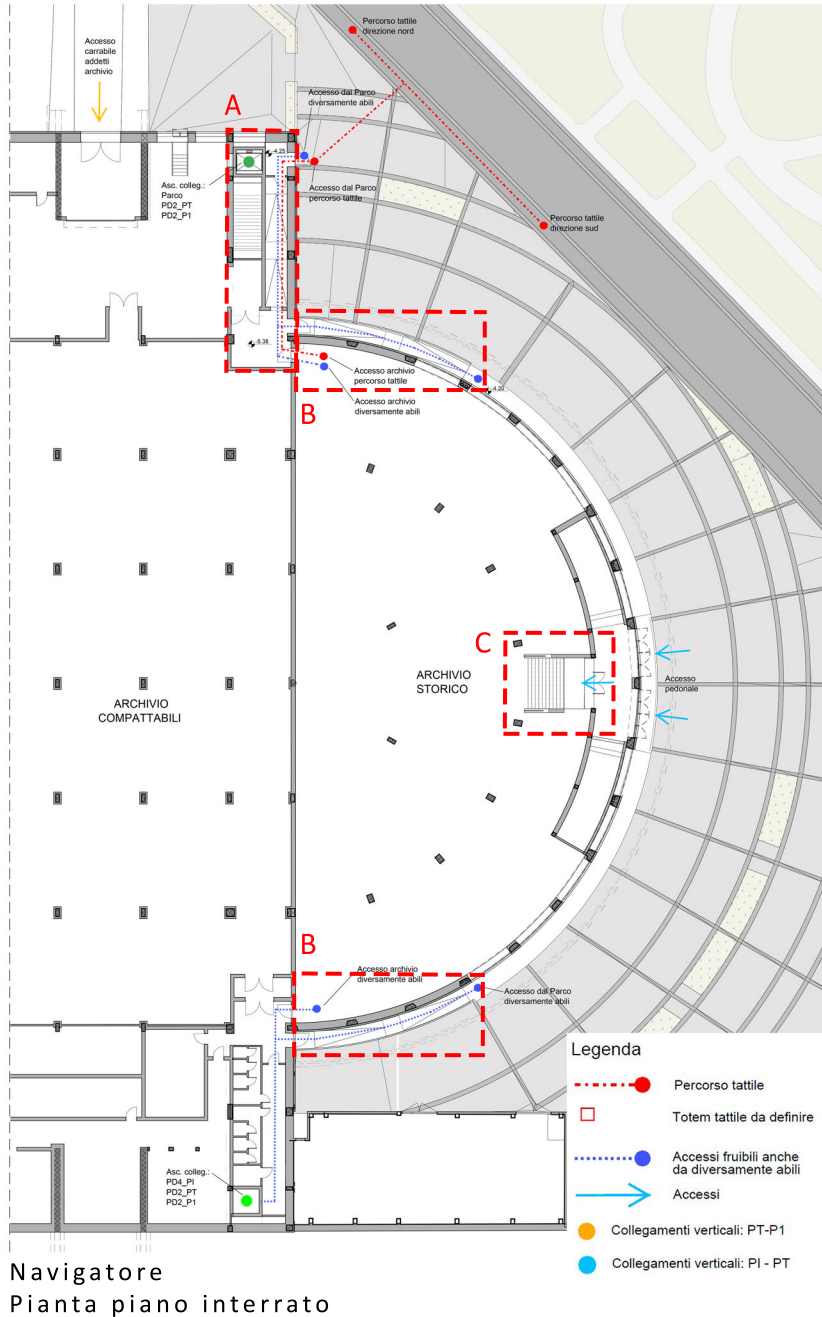


Stralcio pianta piano interrato
Spogliatoio A

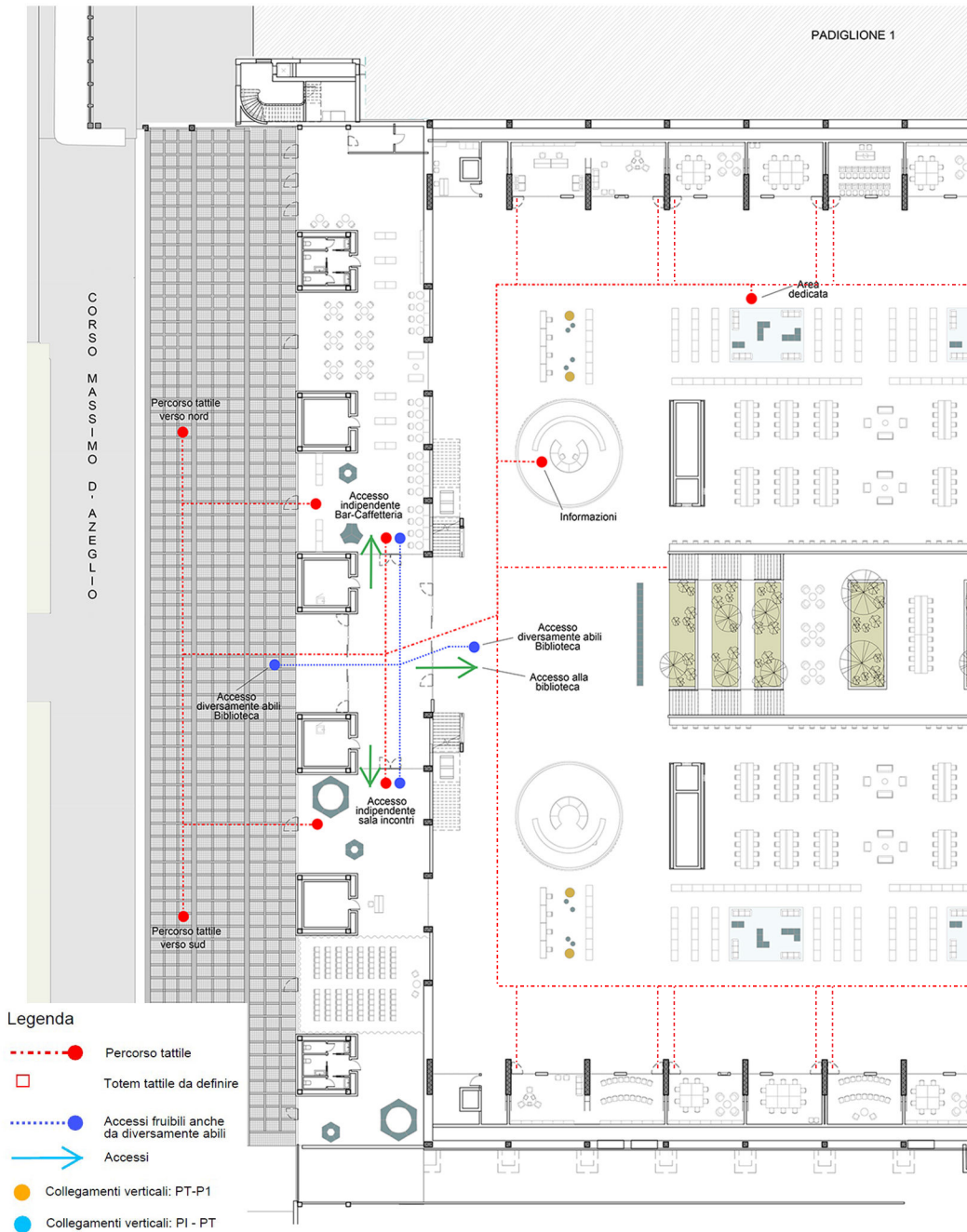


Stralcio pianta piano interrato
Spogliatoio B

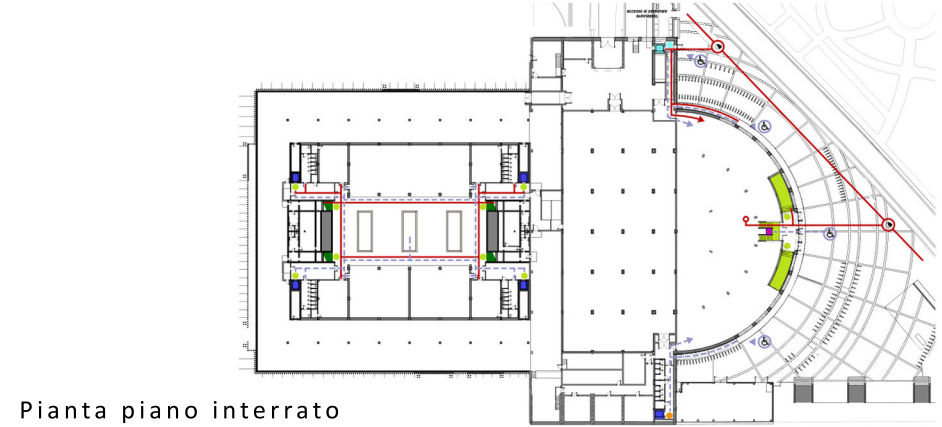
3A. ACCESSIBILITA' - RAMPE INTERNE ED ESTERNE, ASCENSORE



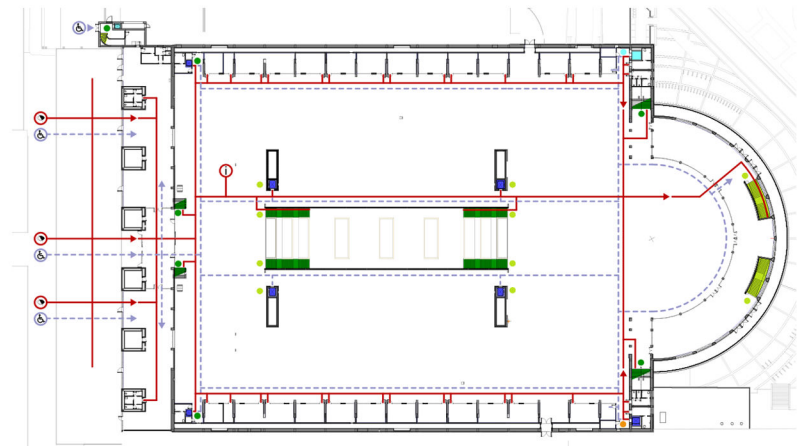
3B. ACCESSIBILITA' - PAVIMENTAZIONE TATTILE



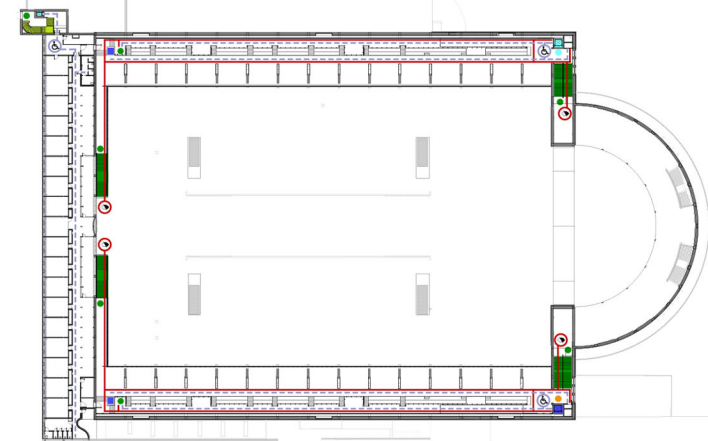
Pianta piano primo



Pianta piano interrato

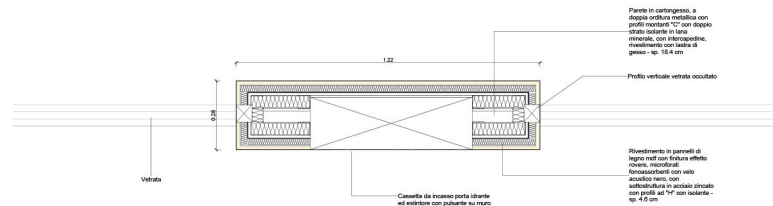
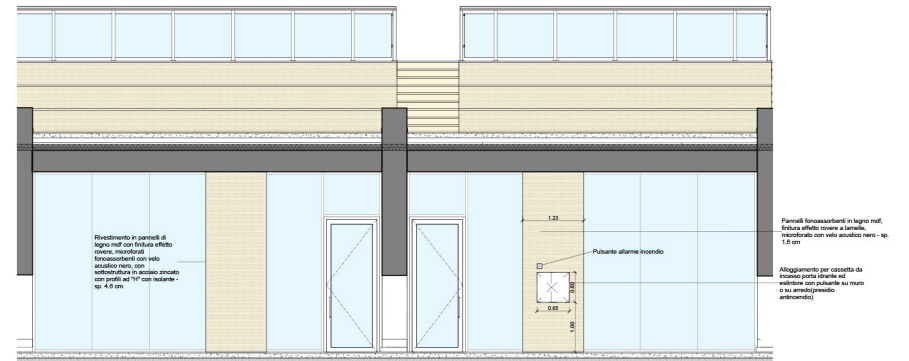
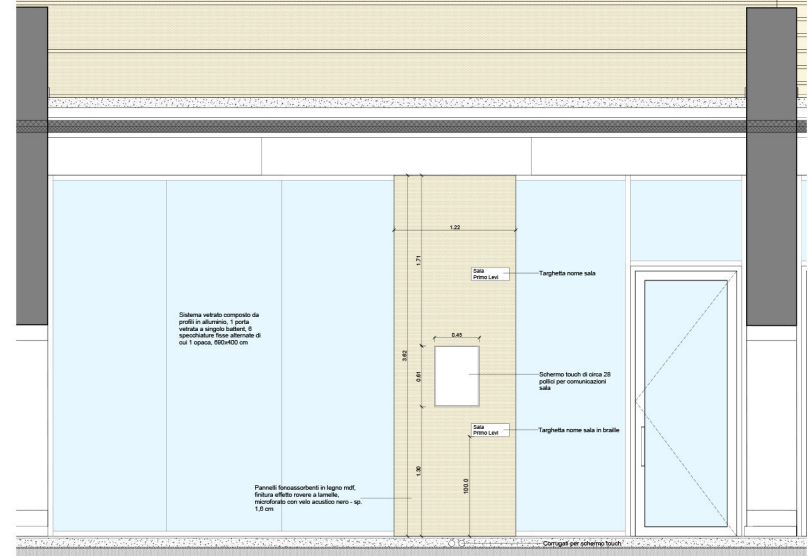
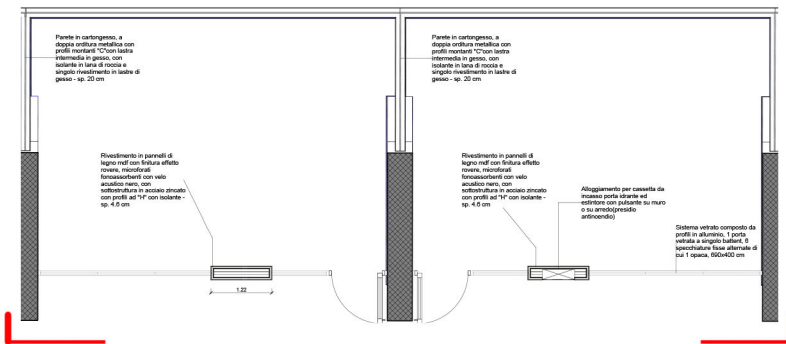
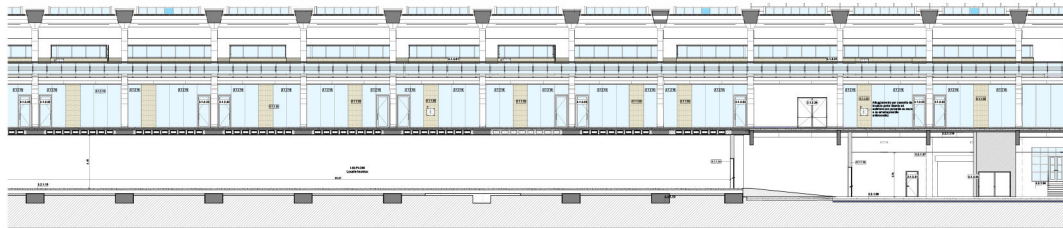
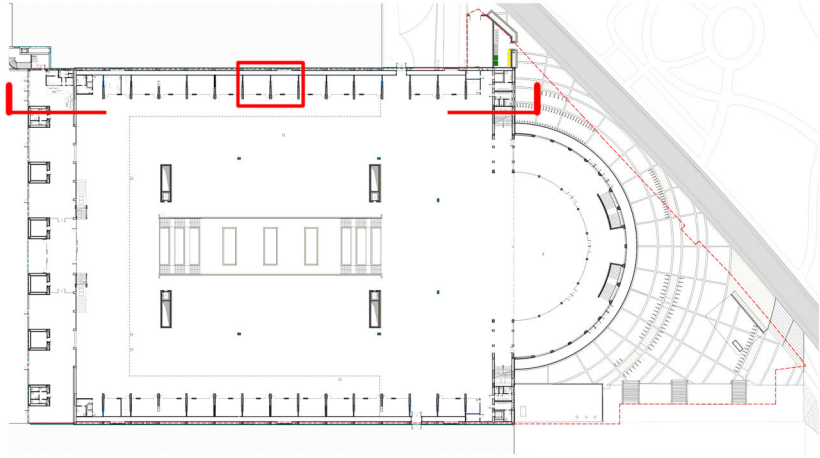


Pianta piano terra

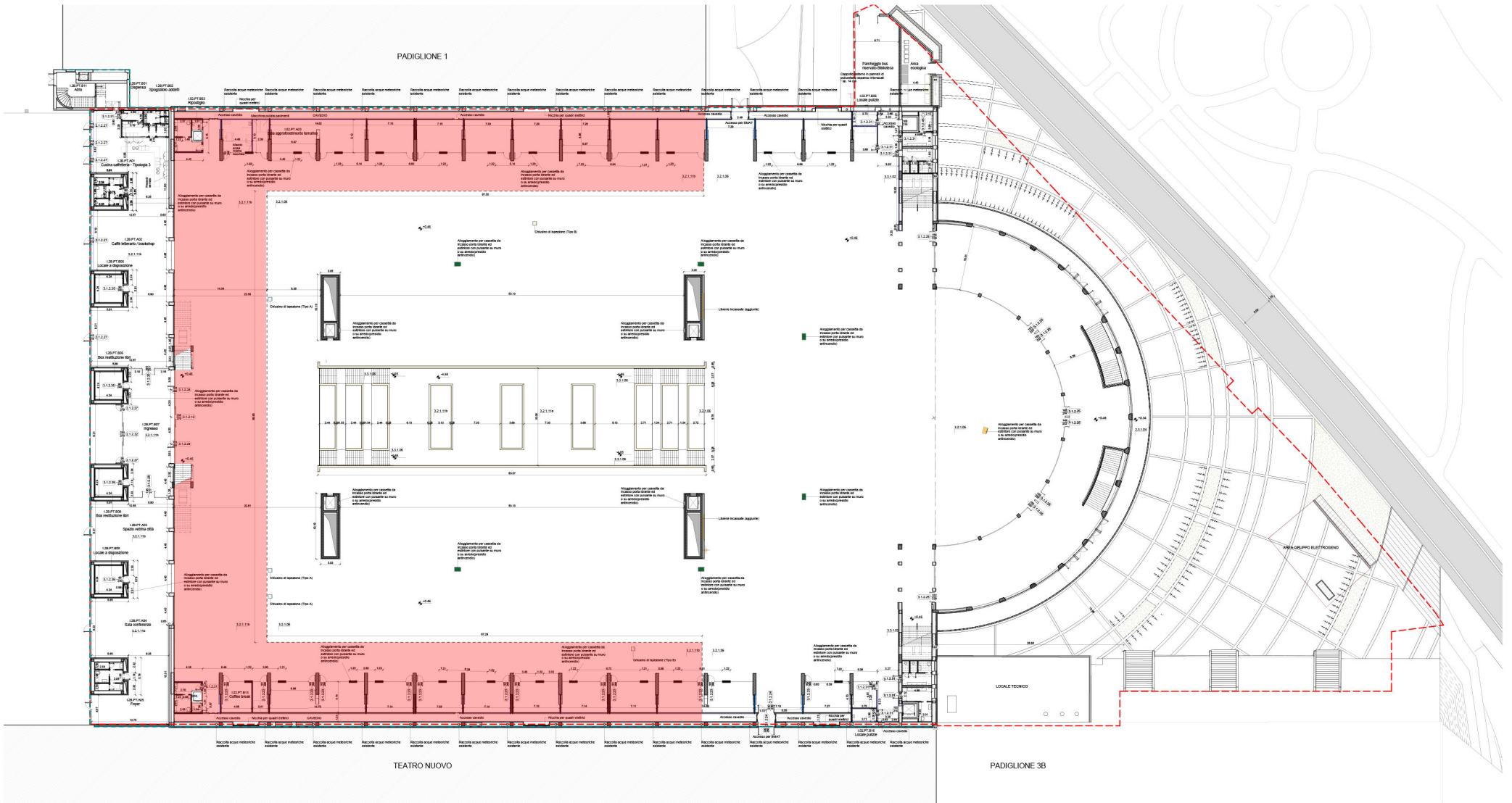


Pianta piano primo

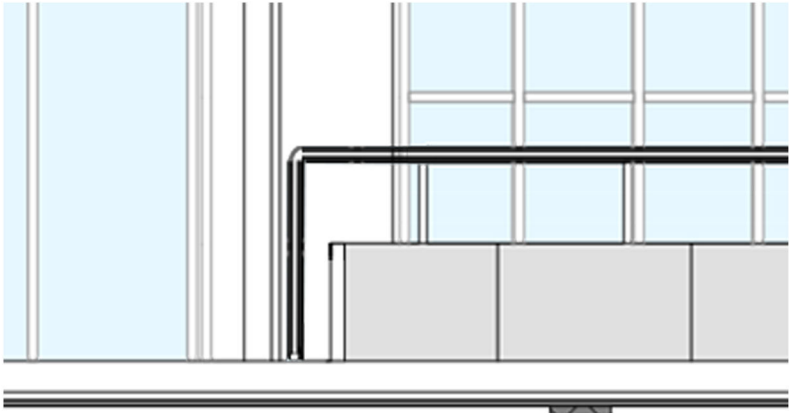
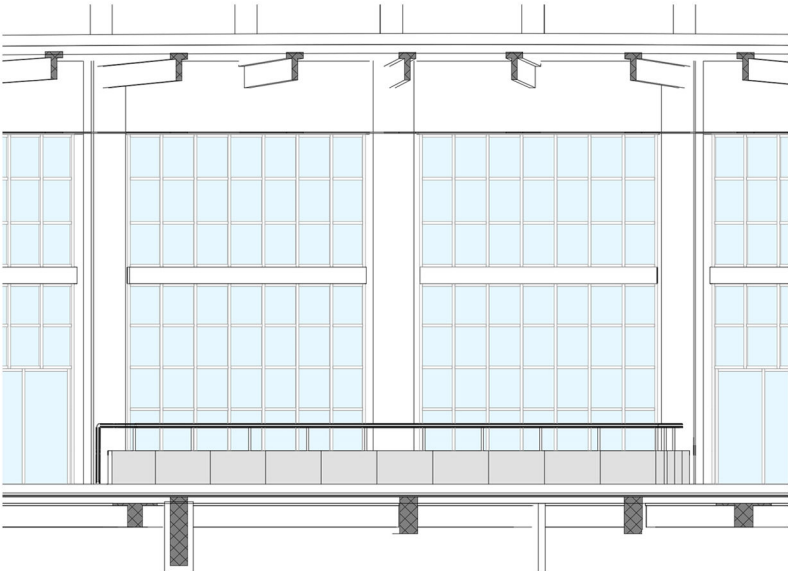
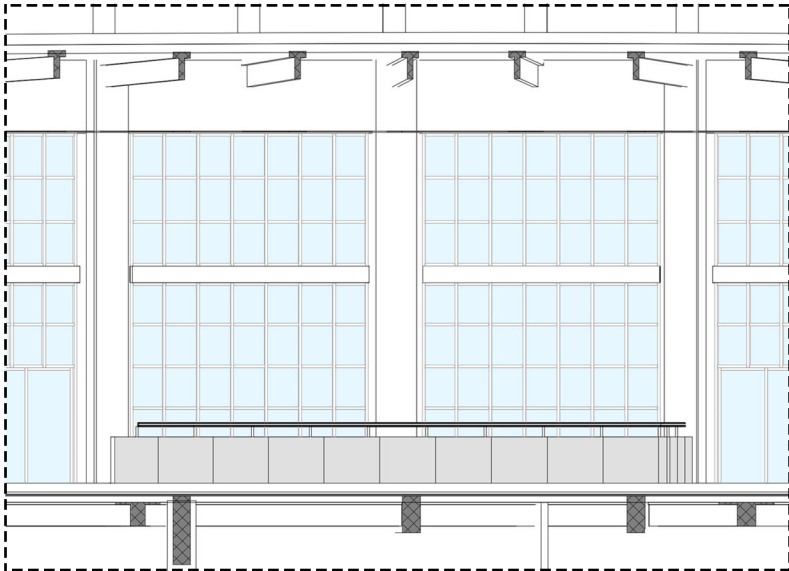
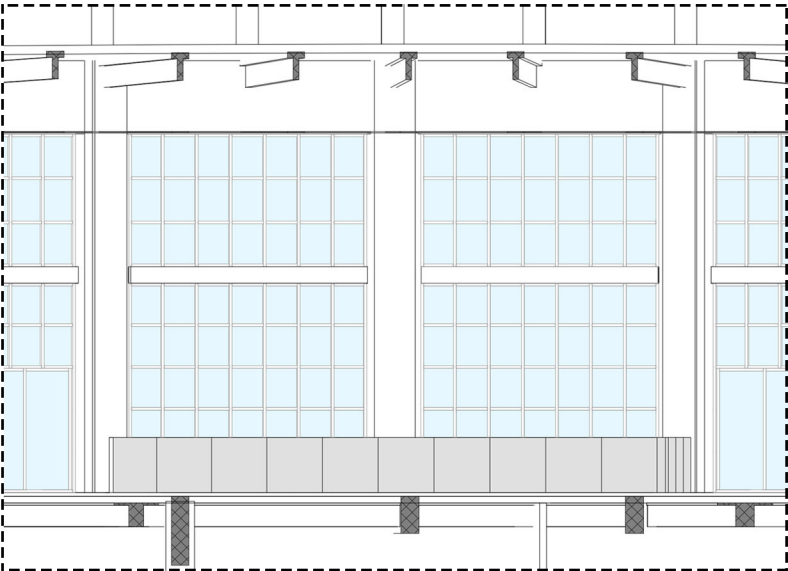
4. SUPERFICIE OPACA TECHE



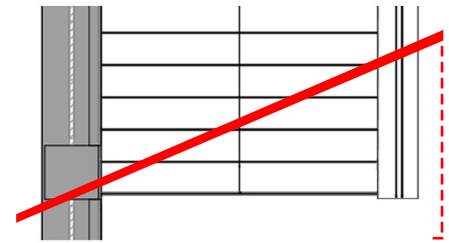
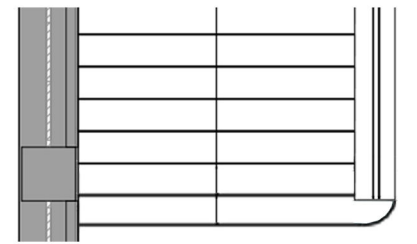
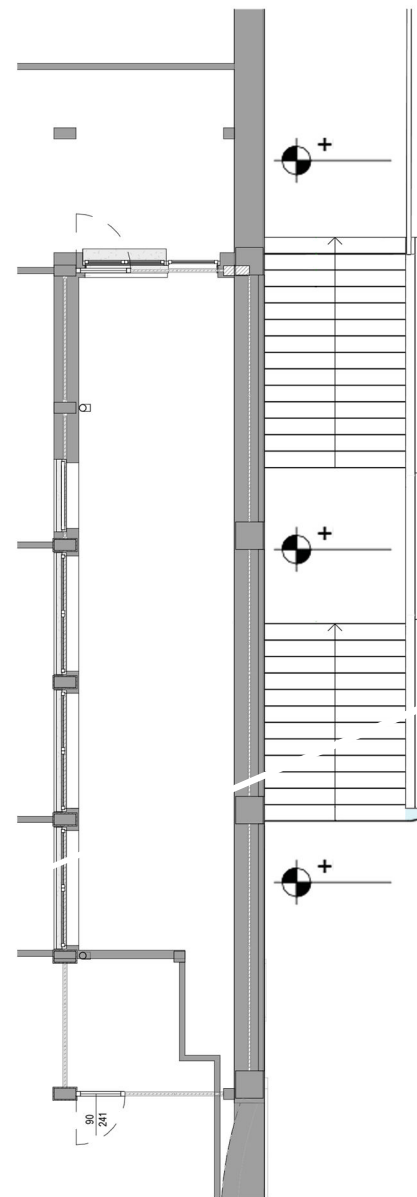
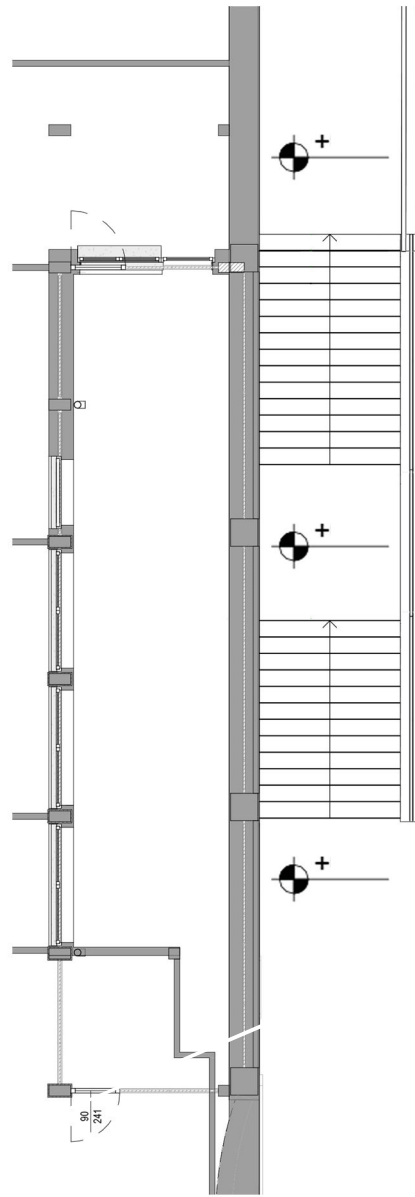
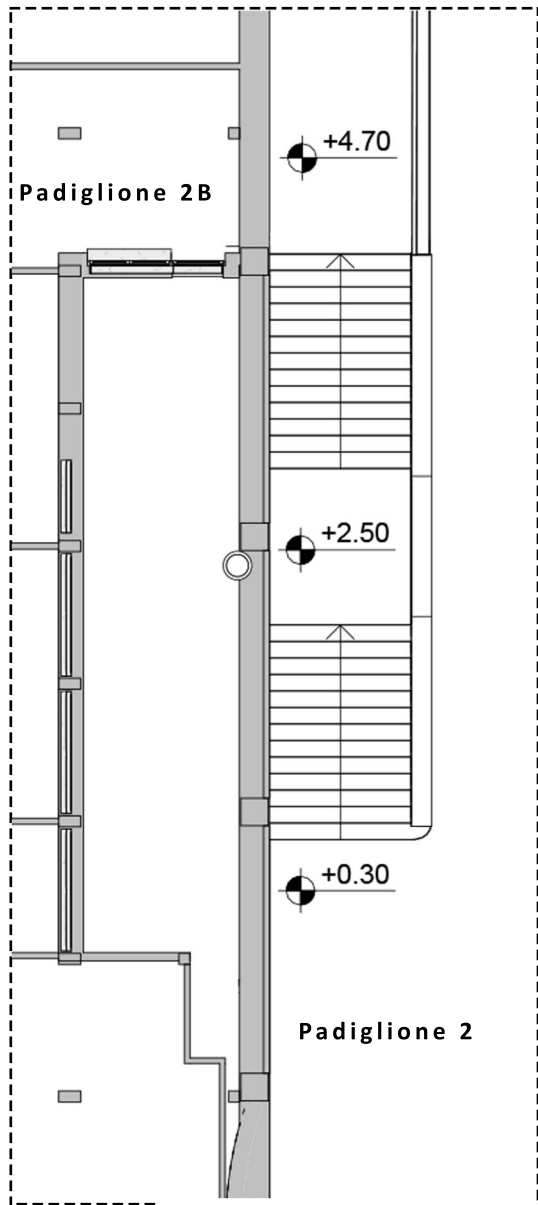
5. MATERASSINO ANTI RUMORE - PROGETTO ESECUTIVO



6. PARAPETTO SCALE ABSIDE



7. PRIMO GRADINO MONUMENTALE



8A. DETTAGLI INFISSI

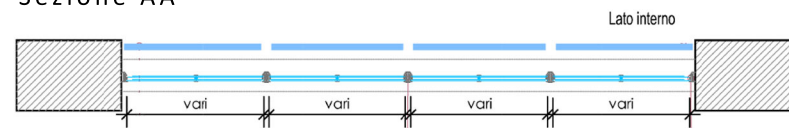
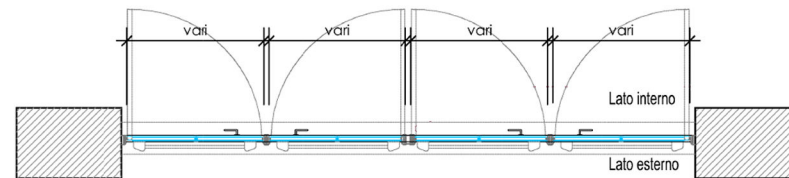
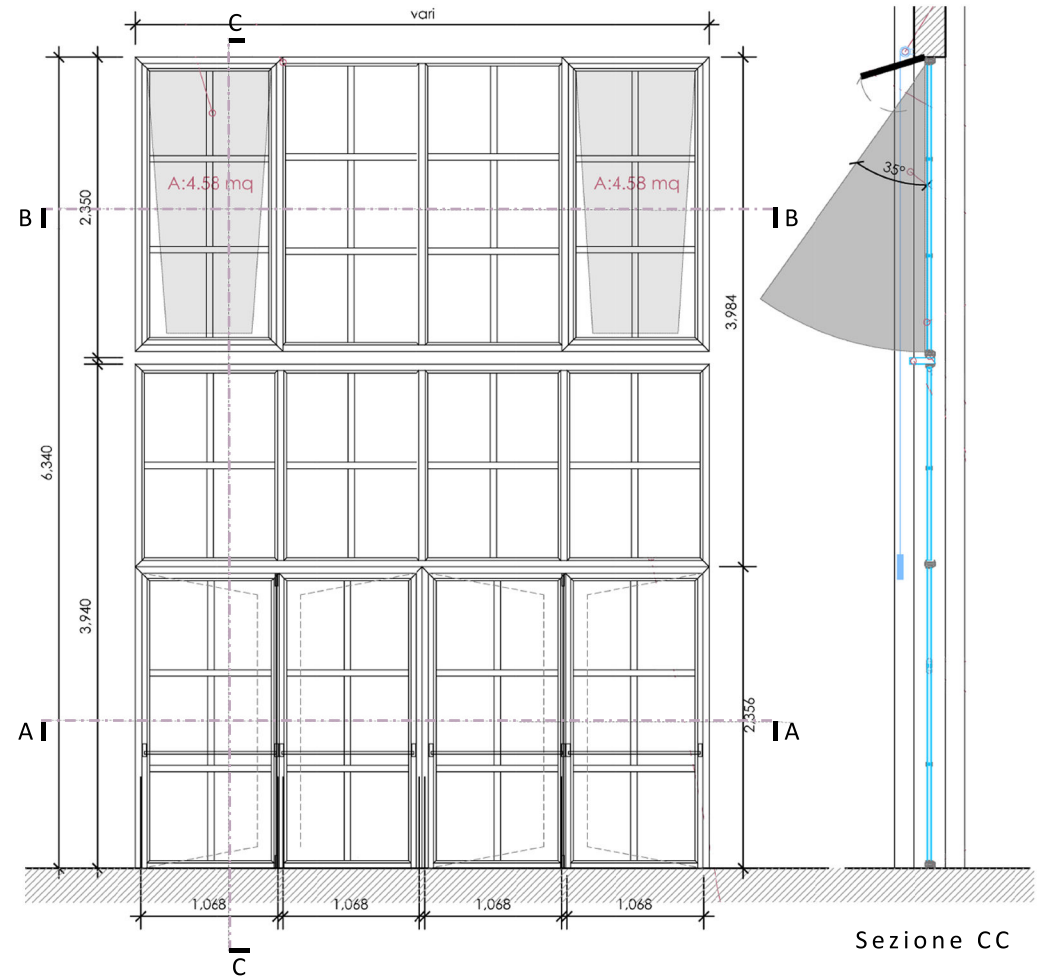
FOTO STORICA



STATO DI FATTO

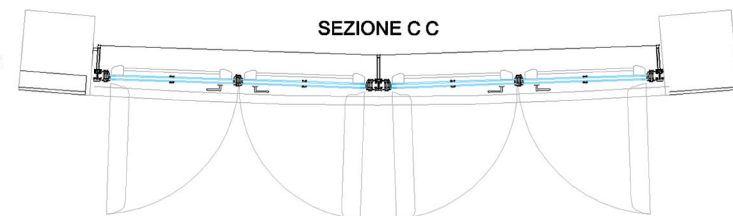
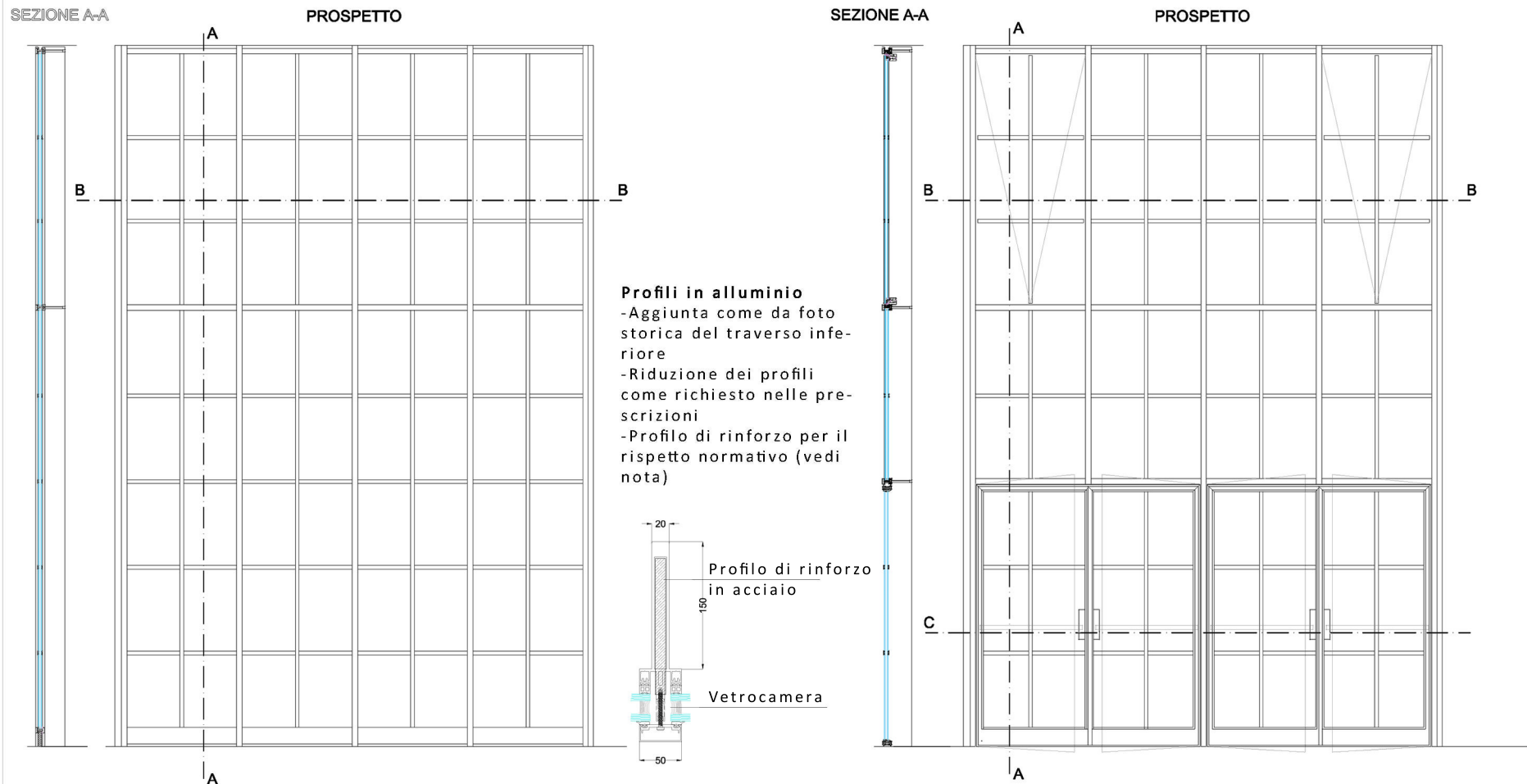


PFTE



8B. DETTAGLI INFISSI

PROGETTO ESECUTIVO



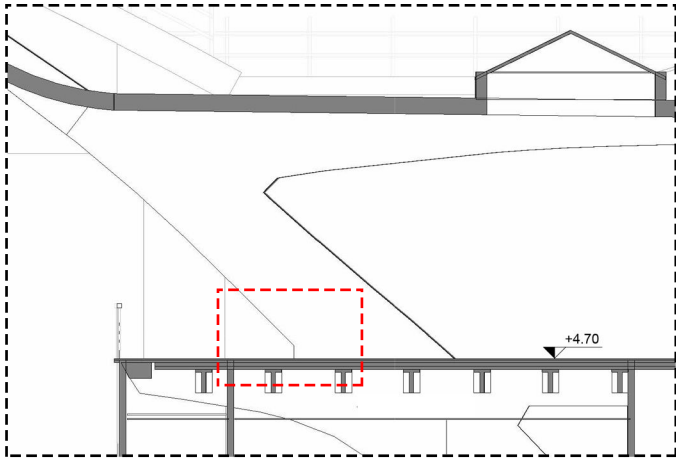
NOTE

Il dimensionamento e' stato eseguito secondo quanto indicato nella norma "ntc2018 (e successive modifiche)" tenendo in considerazioni i seguenti parametri:

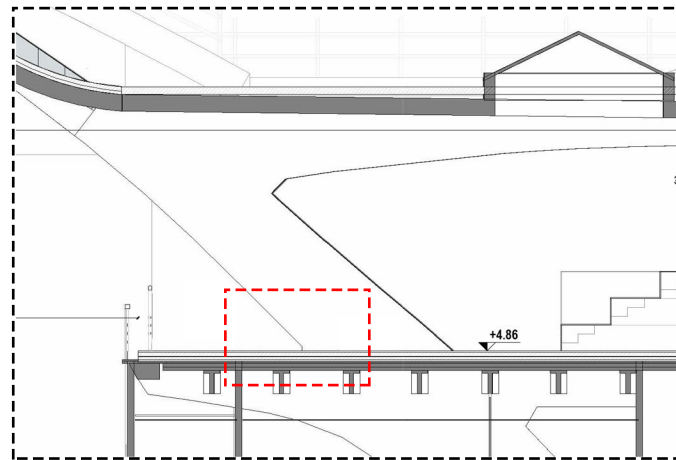
- Regione: Piemonte -Provincia: Torino -Località: Torino-Altitudine: 240m-Altezza edificio: 7m
- Distanza costa: fascia 4 (zona oltre 30km dalla costa)-Classe rugosità: cottenendo i seguenti risultati:-Pressione: 747 n/m²-Velocità del vento: 124 km/h con aggiunta del carico orizzontale per la destinazione d'uso-Spinta della folla: 3000n/m (altezza spinta da terra 120cm)

9. PIEDE PILASTRO

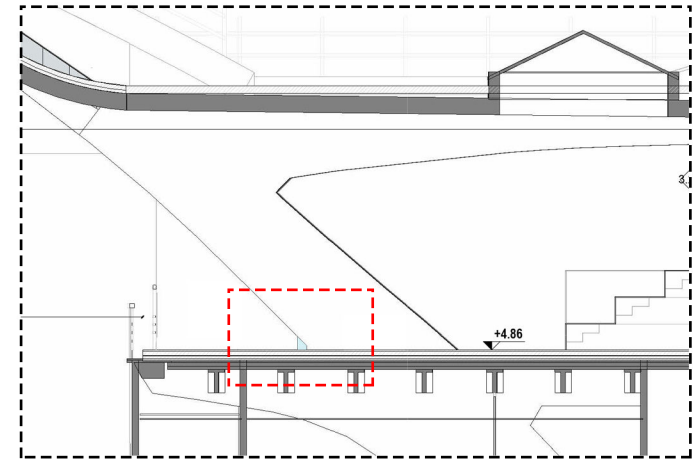
STATO DI FATTO



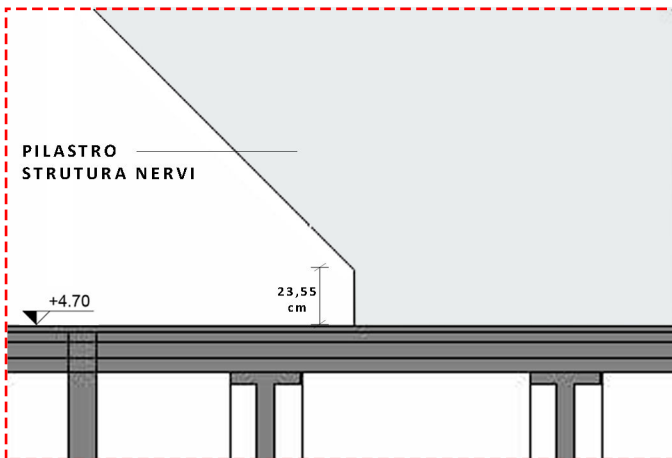
PFTE



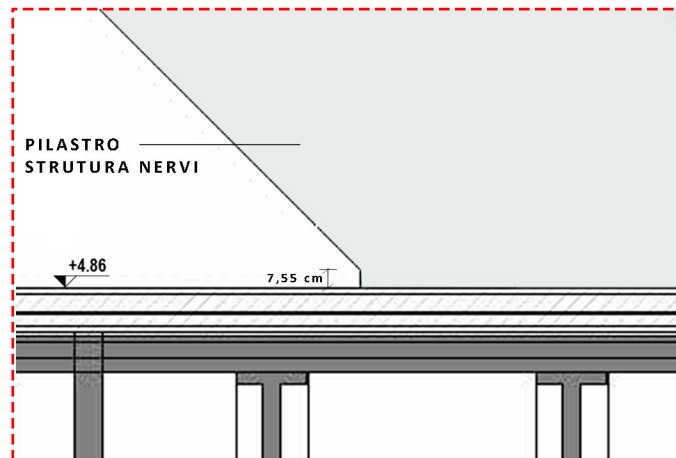
PROGETTO ESECUTIVO



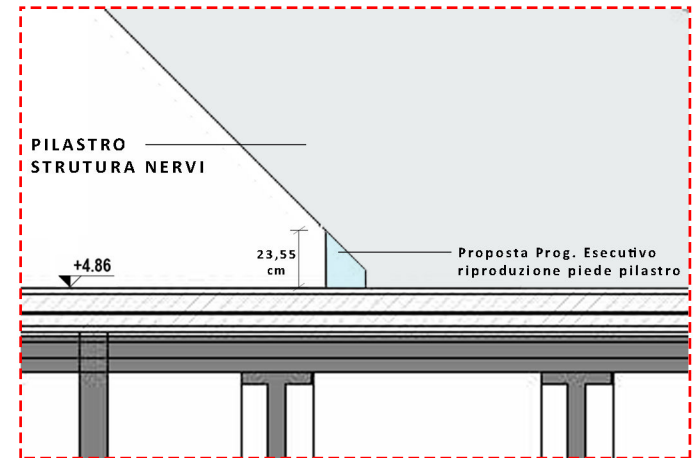
Dettaglio STATO DI FATTO



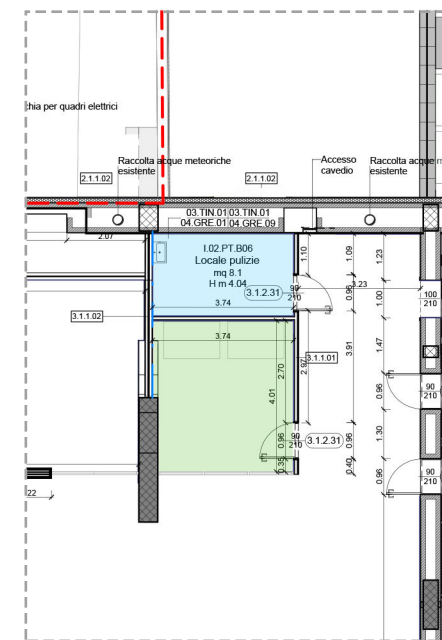
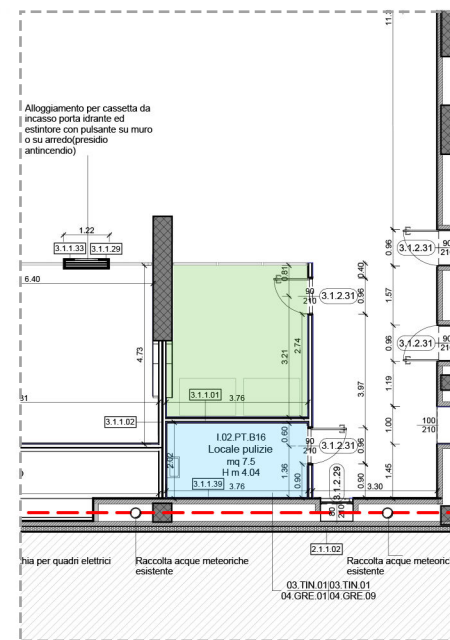
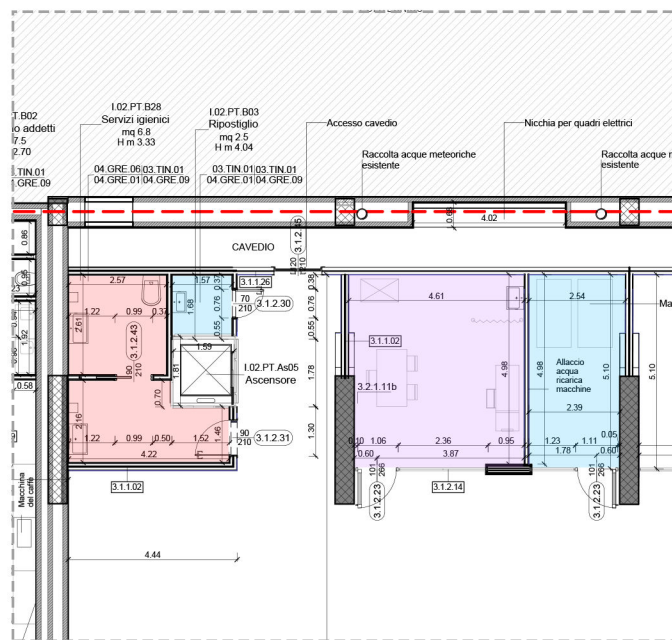
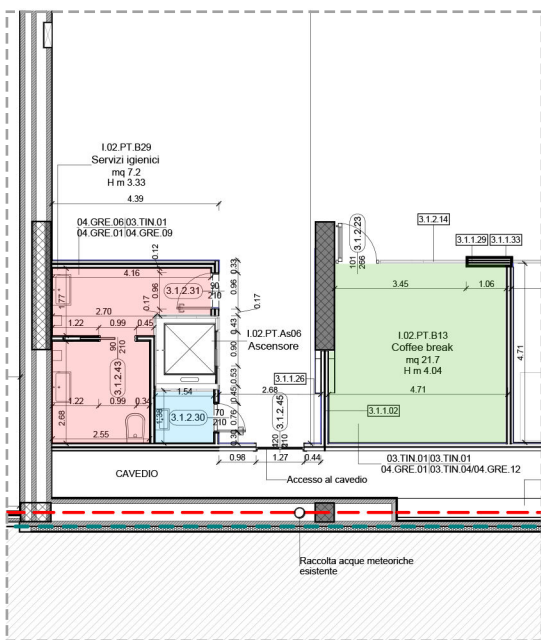
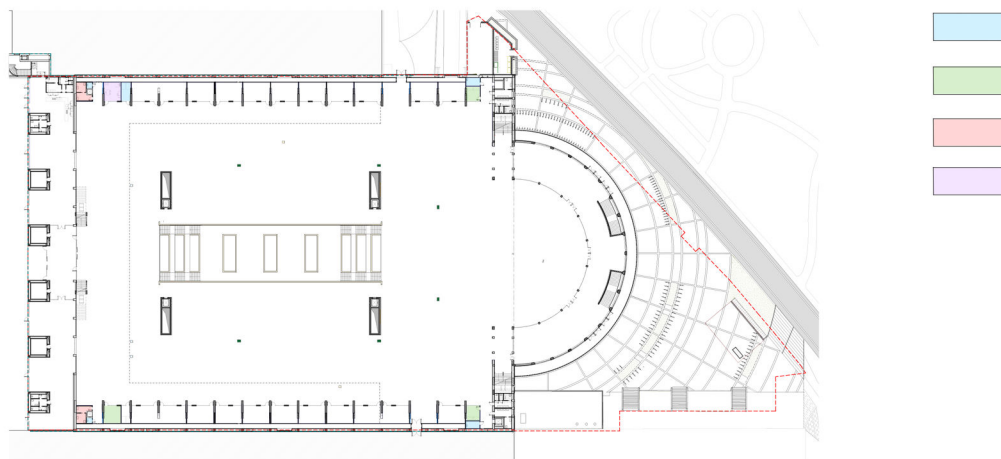
Dettaglio PFTE



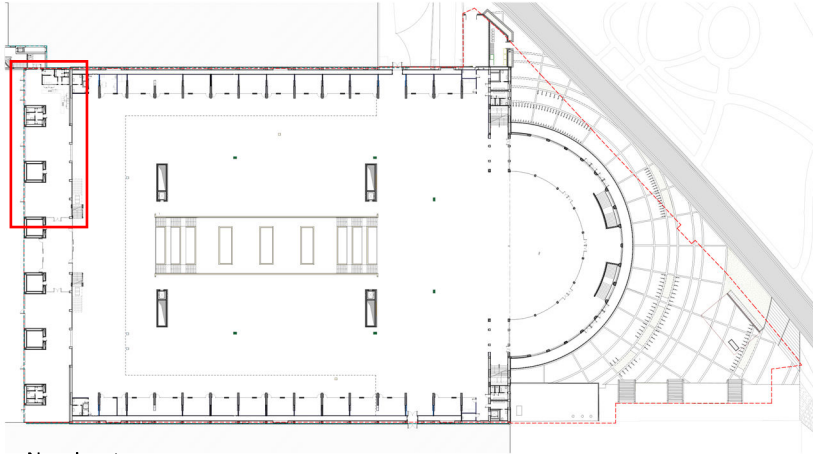
Dettaglio PROGETTO ESECUTIVO



10. ADDETTI PULIZIE, COFFEE BREAK, SERVIZI IGIENICI, INFERMERIA

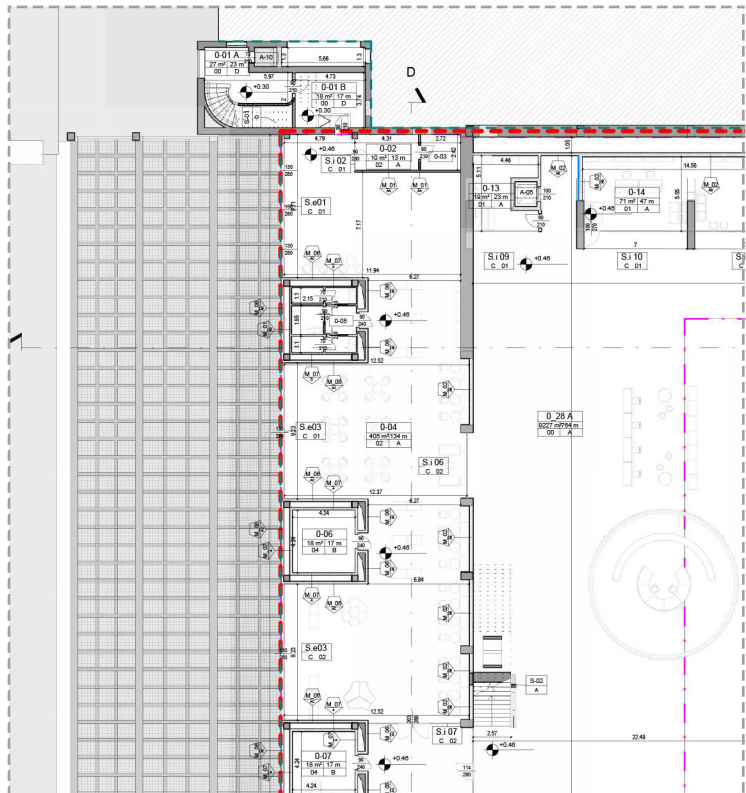


11. BAR CAFFETTERIA

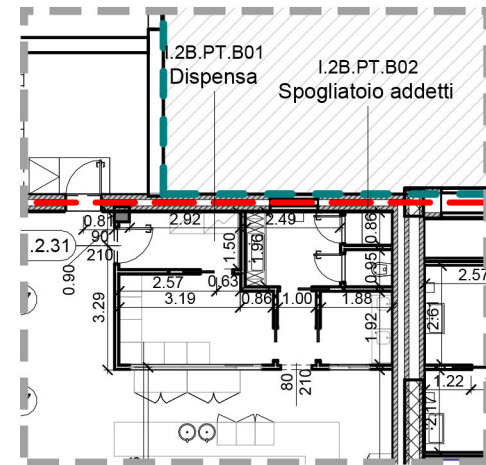


Navigatore

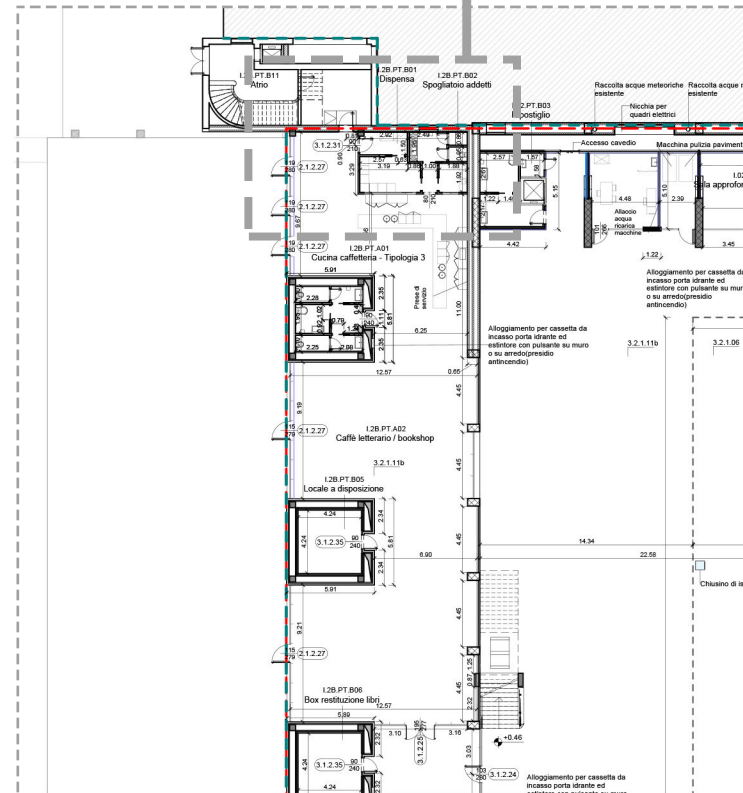
PFTE



Stralcio pianta piano terra

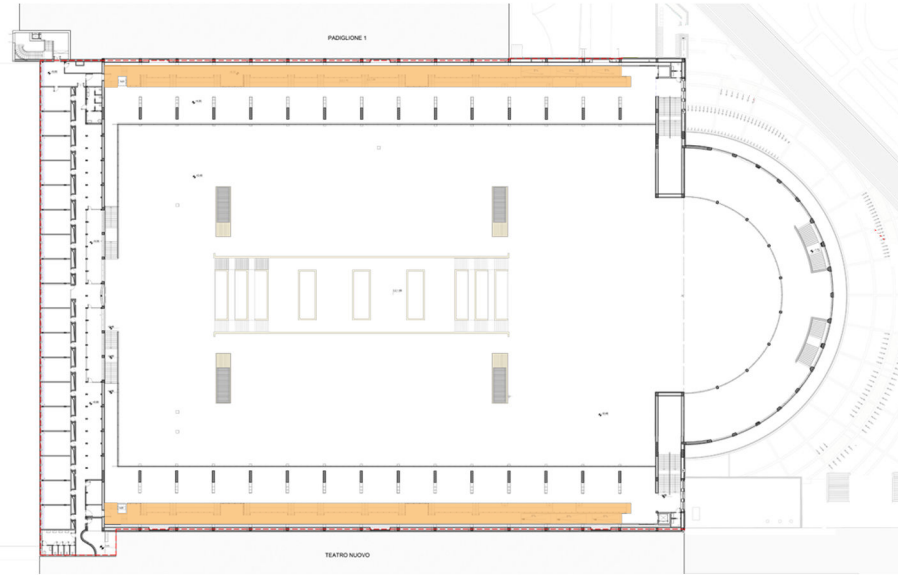


PROGETTO ESECUTIVO




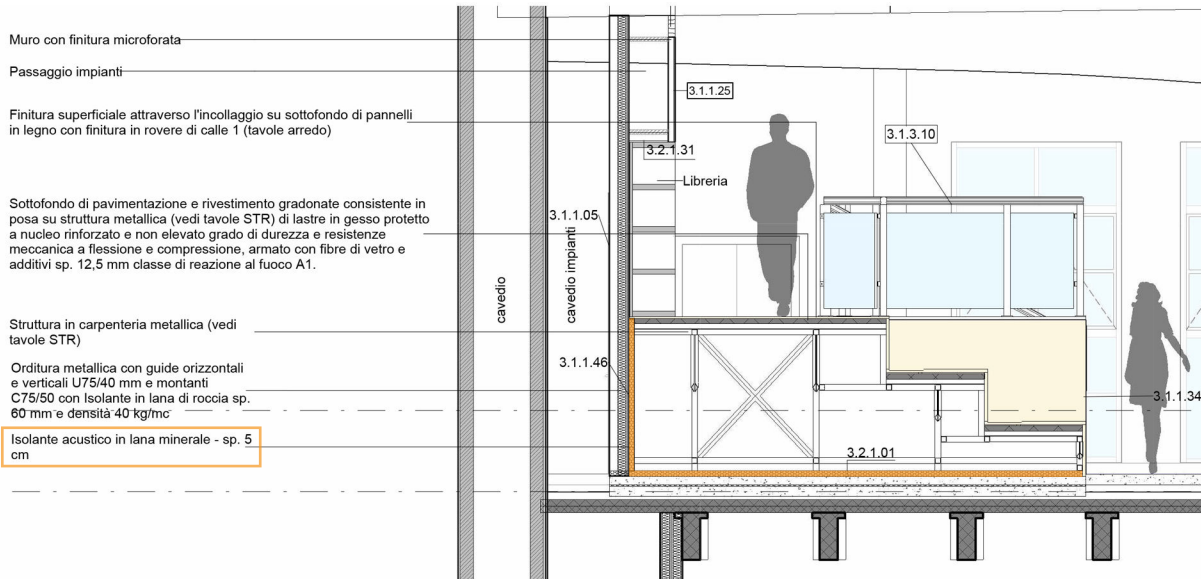
Stralcio pianta piano terra

12. GRADONATE

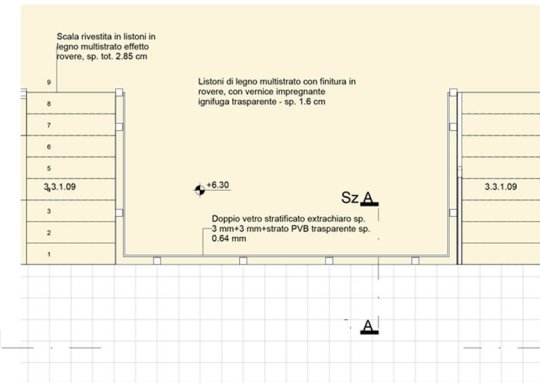


Pianta piano primo

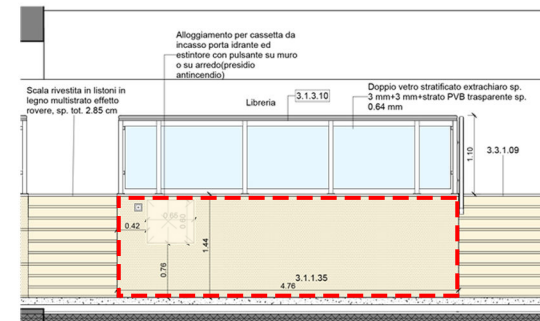
 Isolante anti-rumore in pannelli di lana minerale - sp. 5 cm



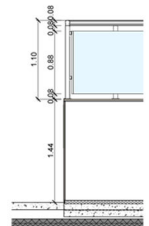
Dettaglio gradonate



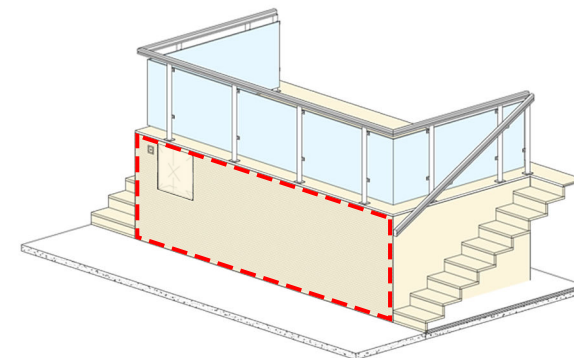
Stralcio pianta della nuova gradonata in legno



Prospetto PR1

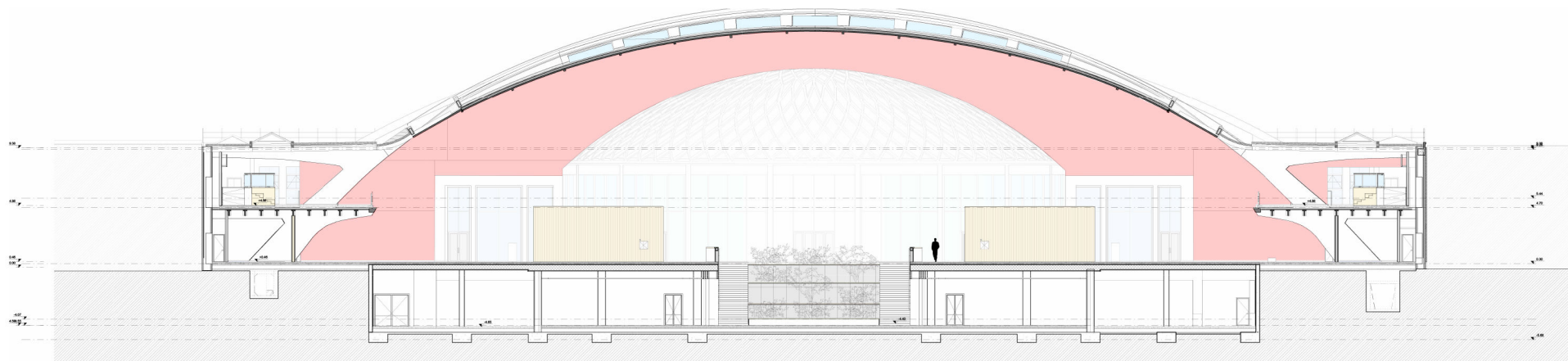
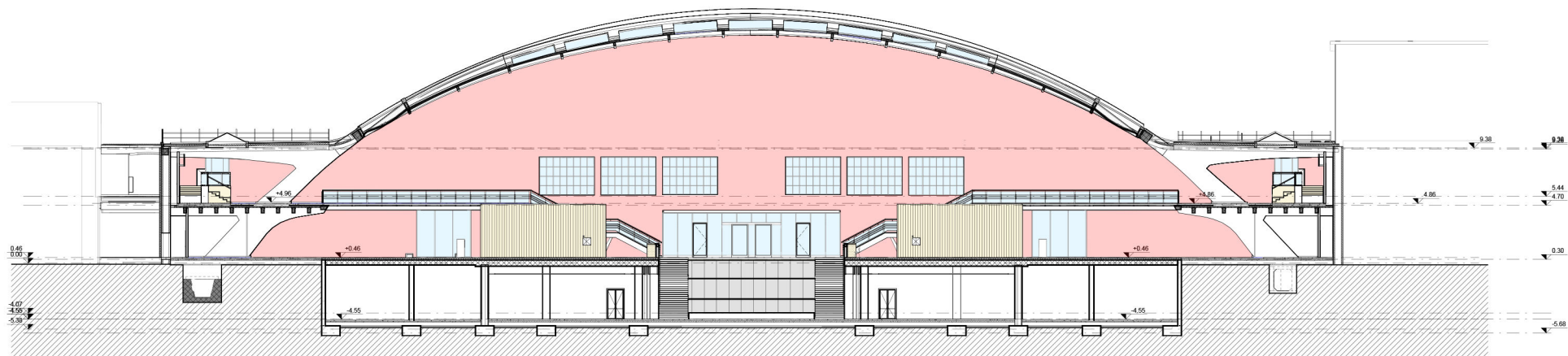
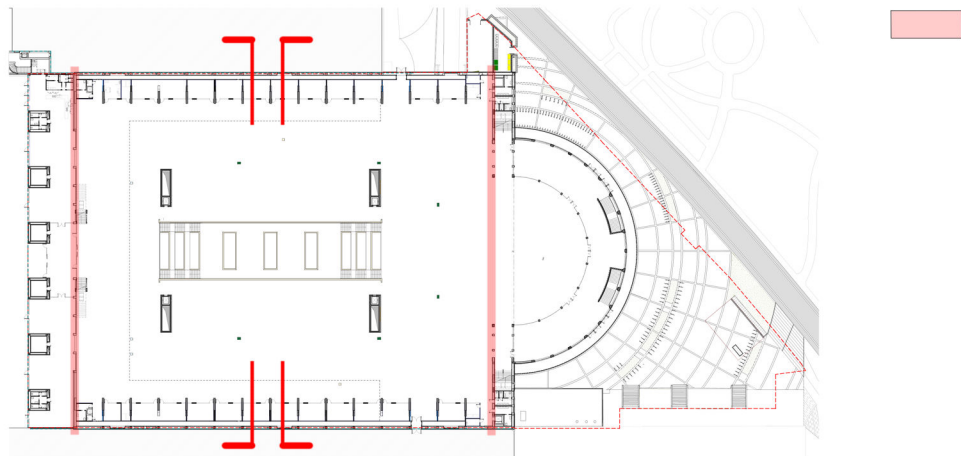


Sezione AA



Vista 3D

13. INTONACO ACUSTICO



14. PLACCAGGIO REI

