

**RINATURALIZZAZIONE E MESSA IN SICUREZZA
 DELLA SPONDA DESTRA DEL Fiume PO
 TRATTO COMPRESO TRA C.SO MONCALIERI 310 E PISCINALDO**

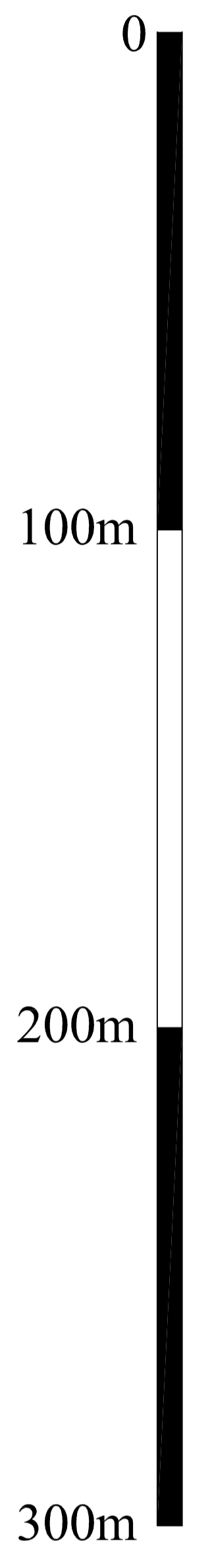
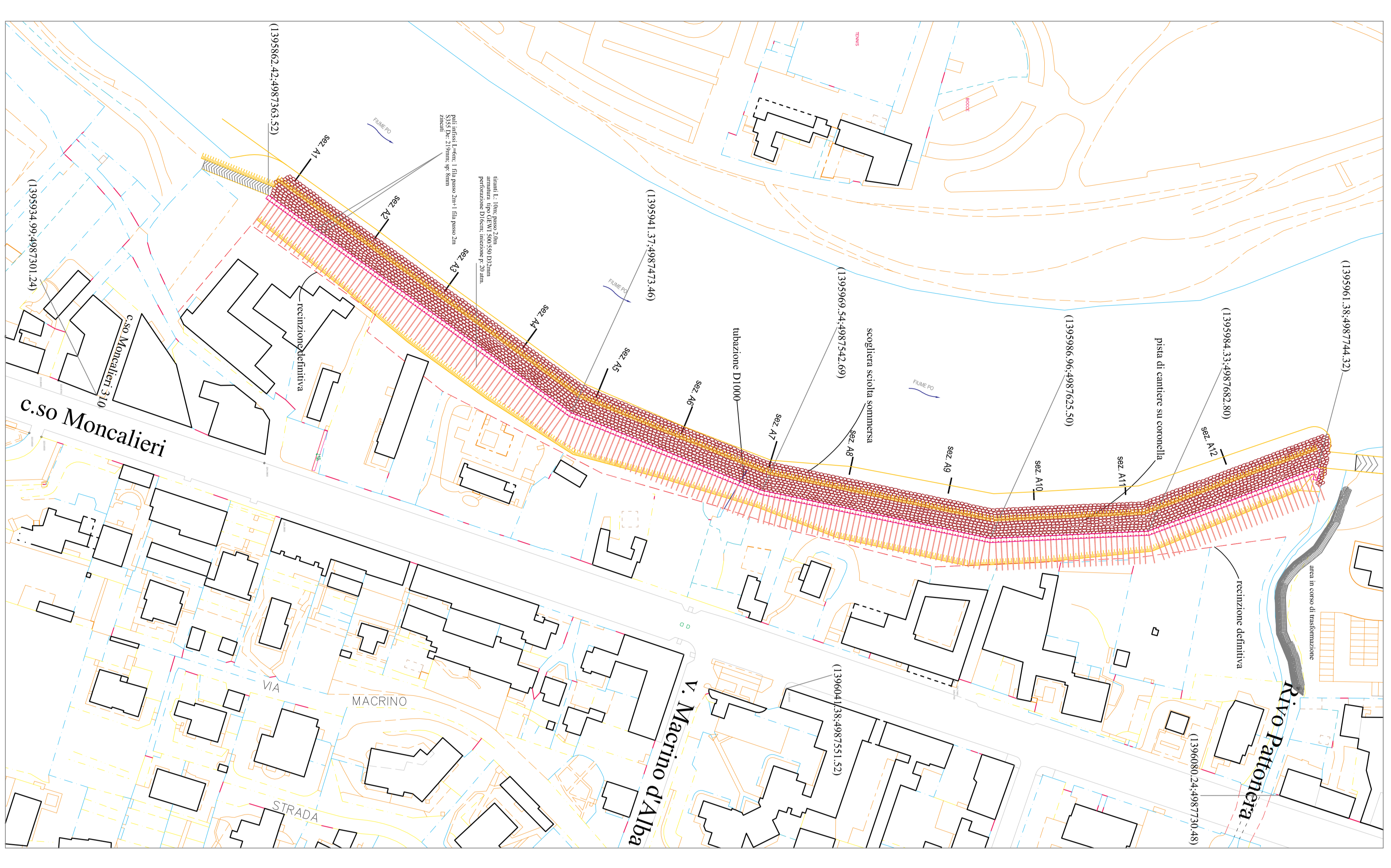
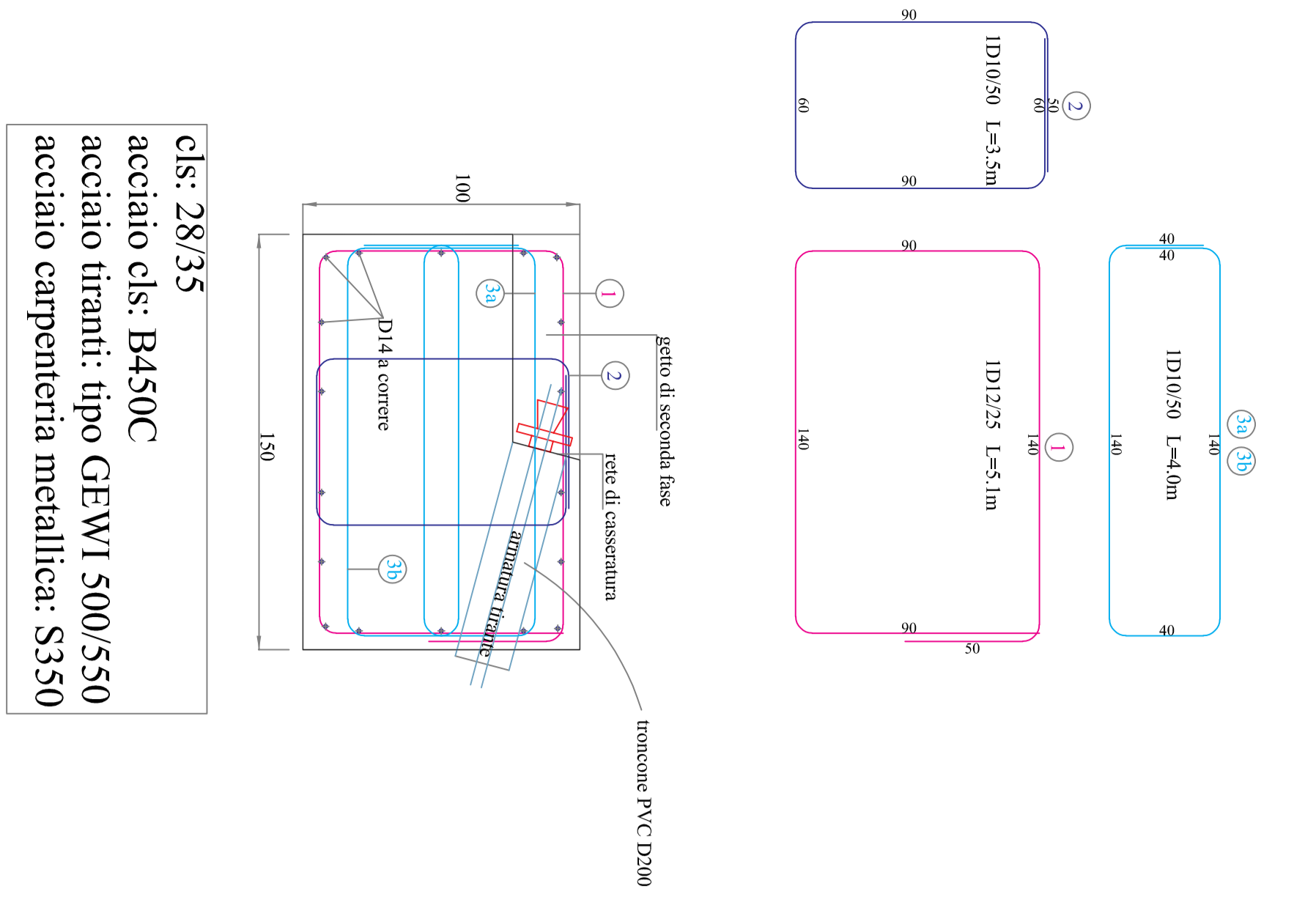
PROGETTO ESECUTIVO

data: aprile 2024 revisione:

codice elaborato:
 denominazione elaborato: **STRUTTURE TRATTO DI MONTE
 UFFICIO DI PROGETTAZIONE**
 progettista coordinatore: Ing. Lorenzo Peretti

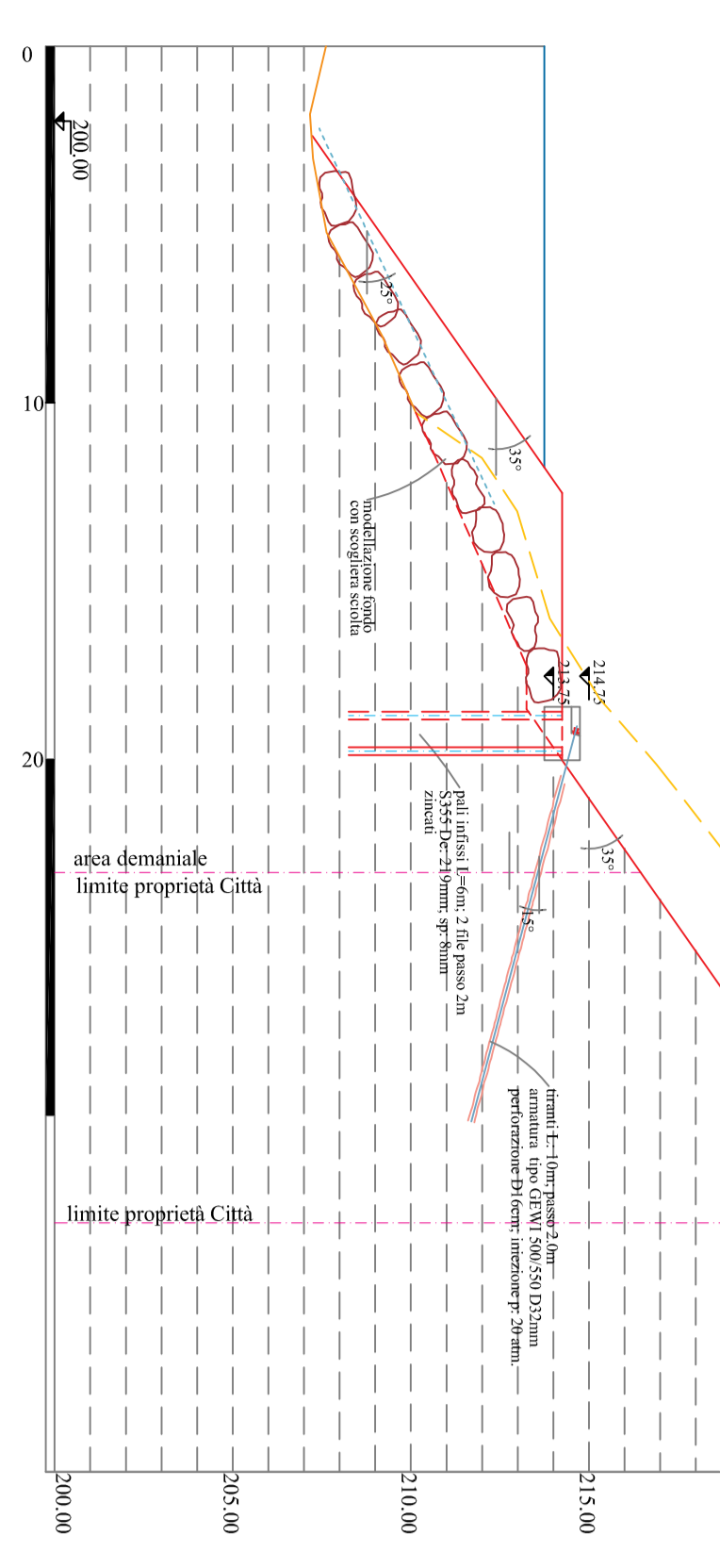
coordinatore per la sicurezza in fase di progettazione: geom. Giorgio Ghilfi

RESPONSABILE DEL PROGETTO: ing. Amerigo STROZZIERO

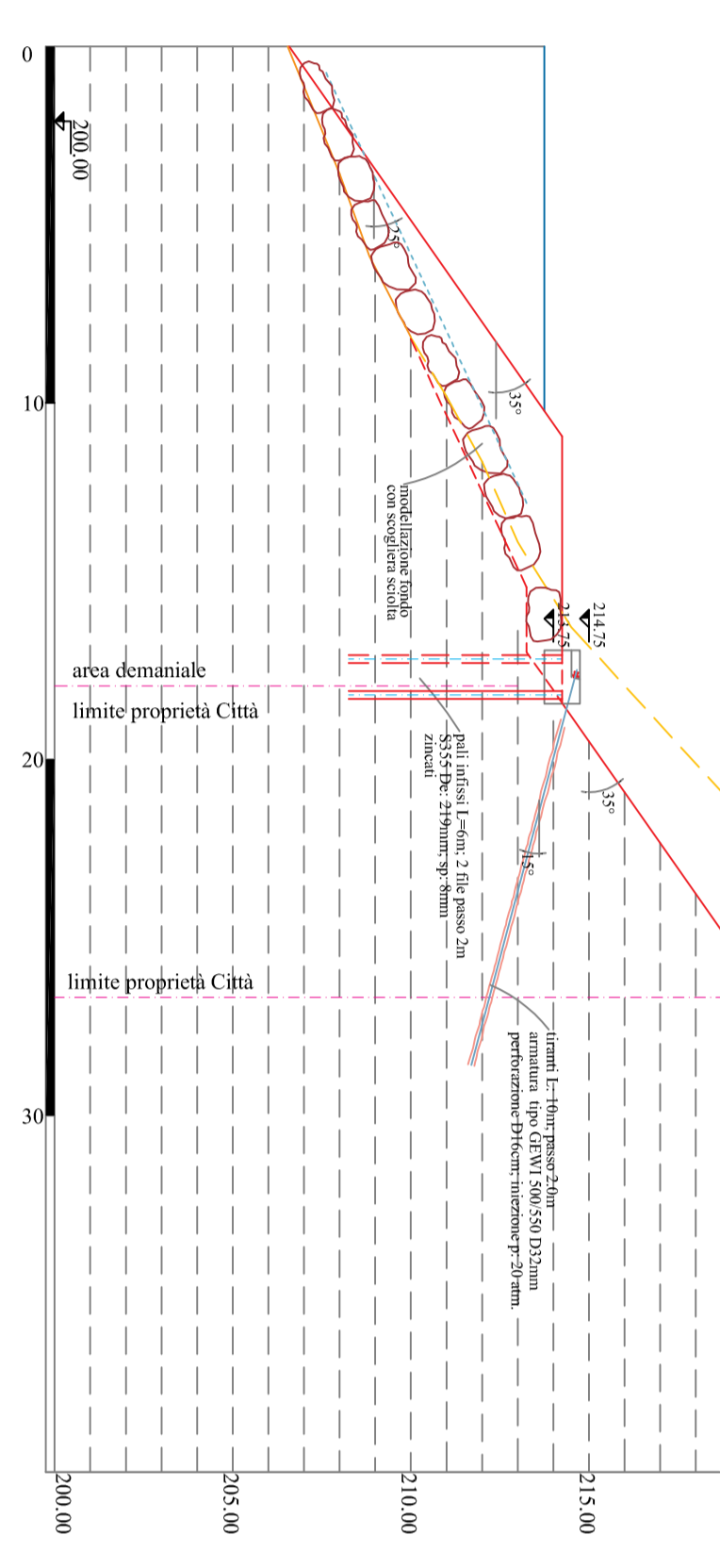


dovrà dimostrarsi con rilievo batimetrico l'ottenimento della modellazione del fondo tramite scogliera con inclinazione < 25°

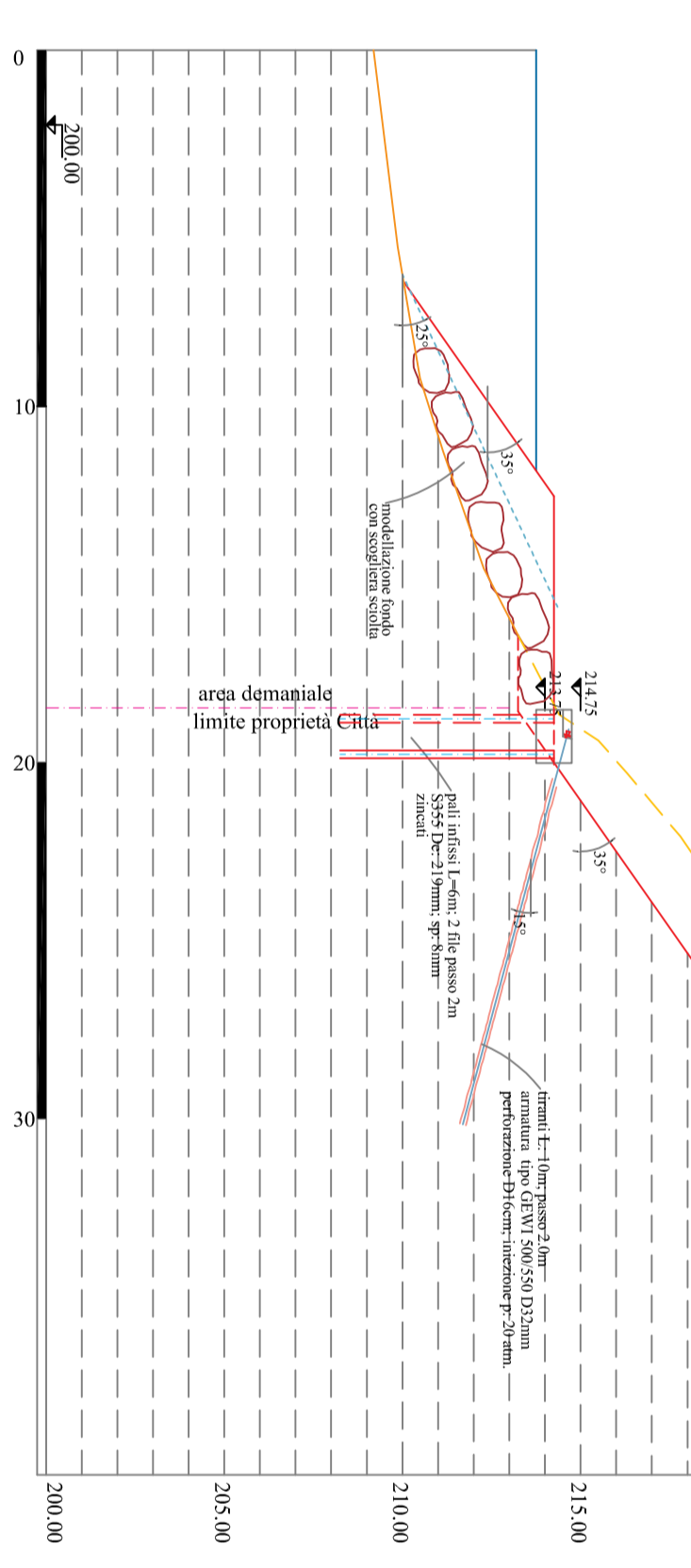
sez. A9



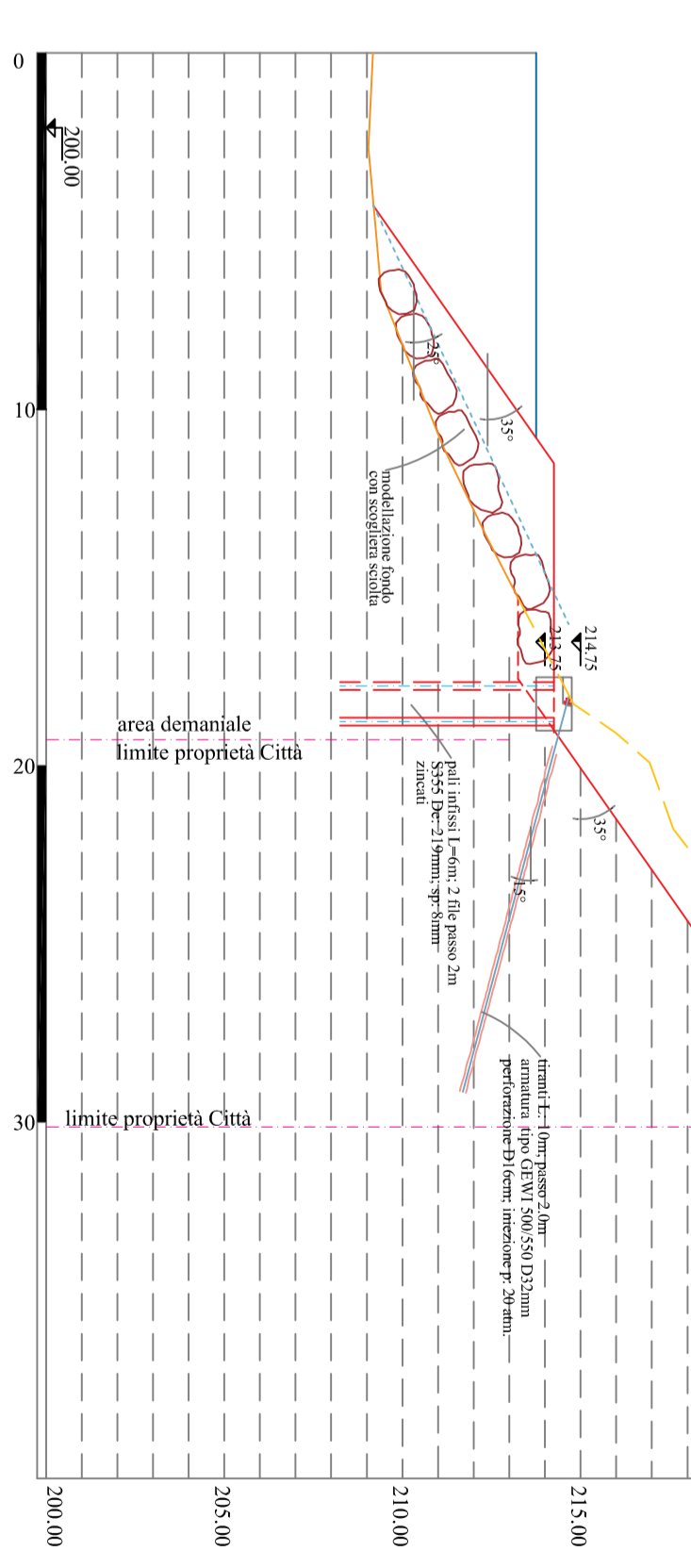
sez. A10



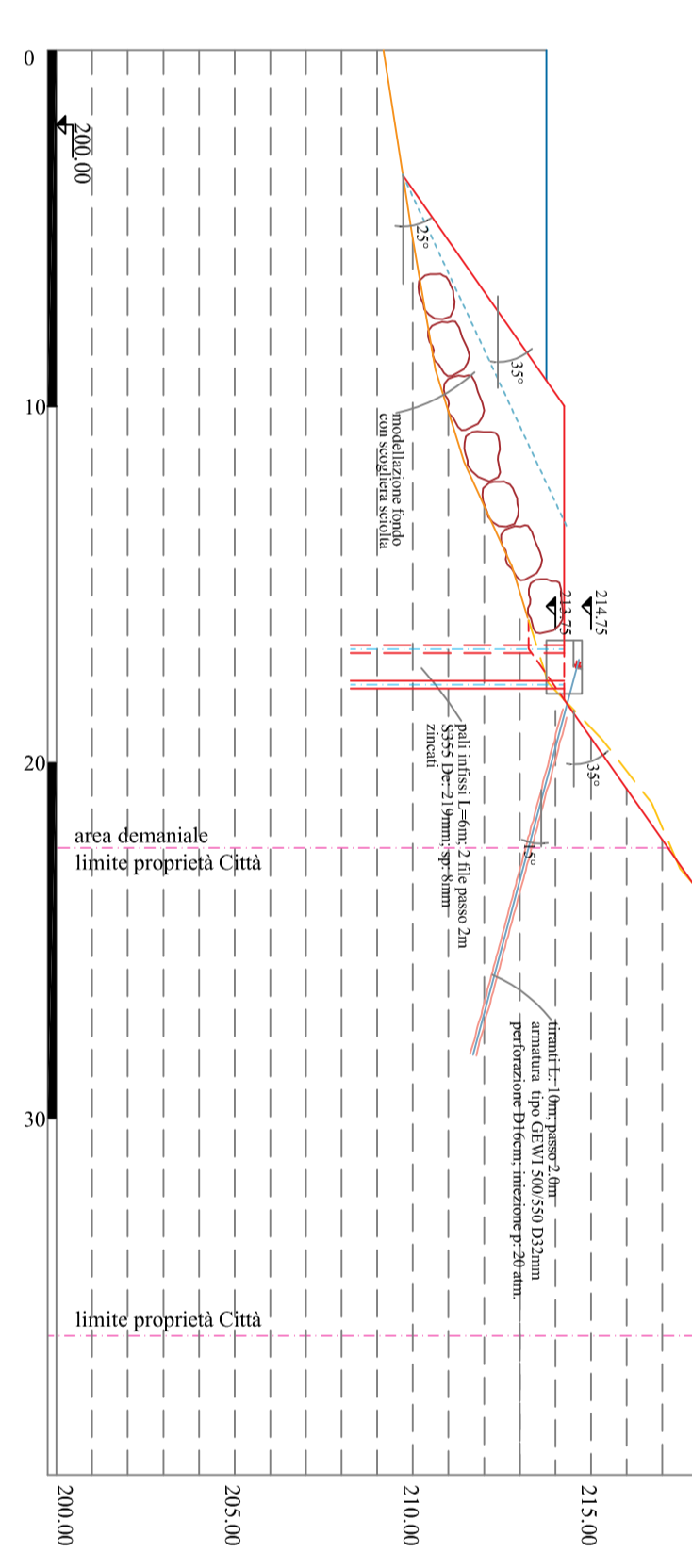
sez. A1



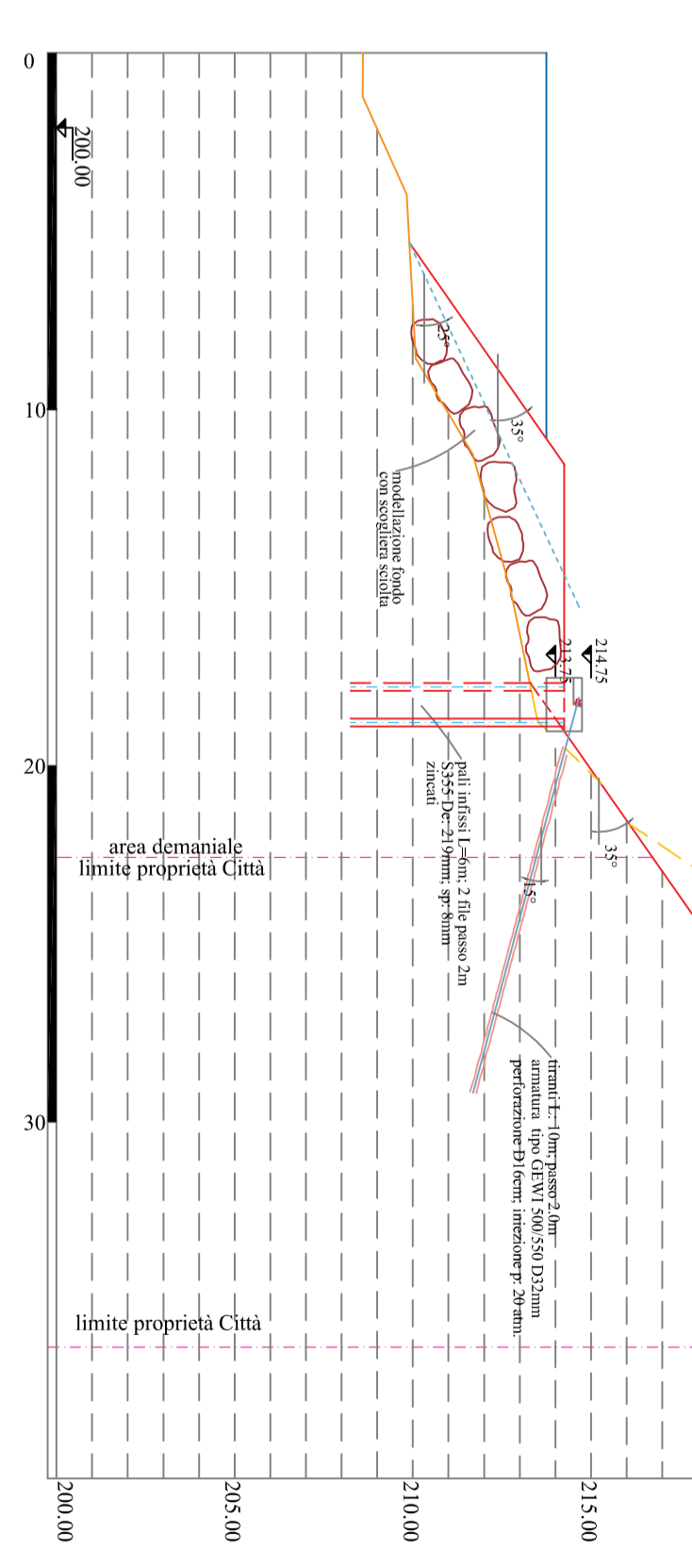
sez. A2



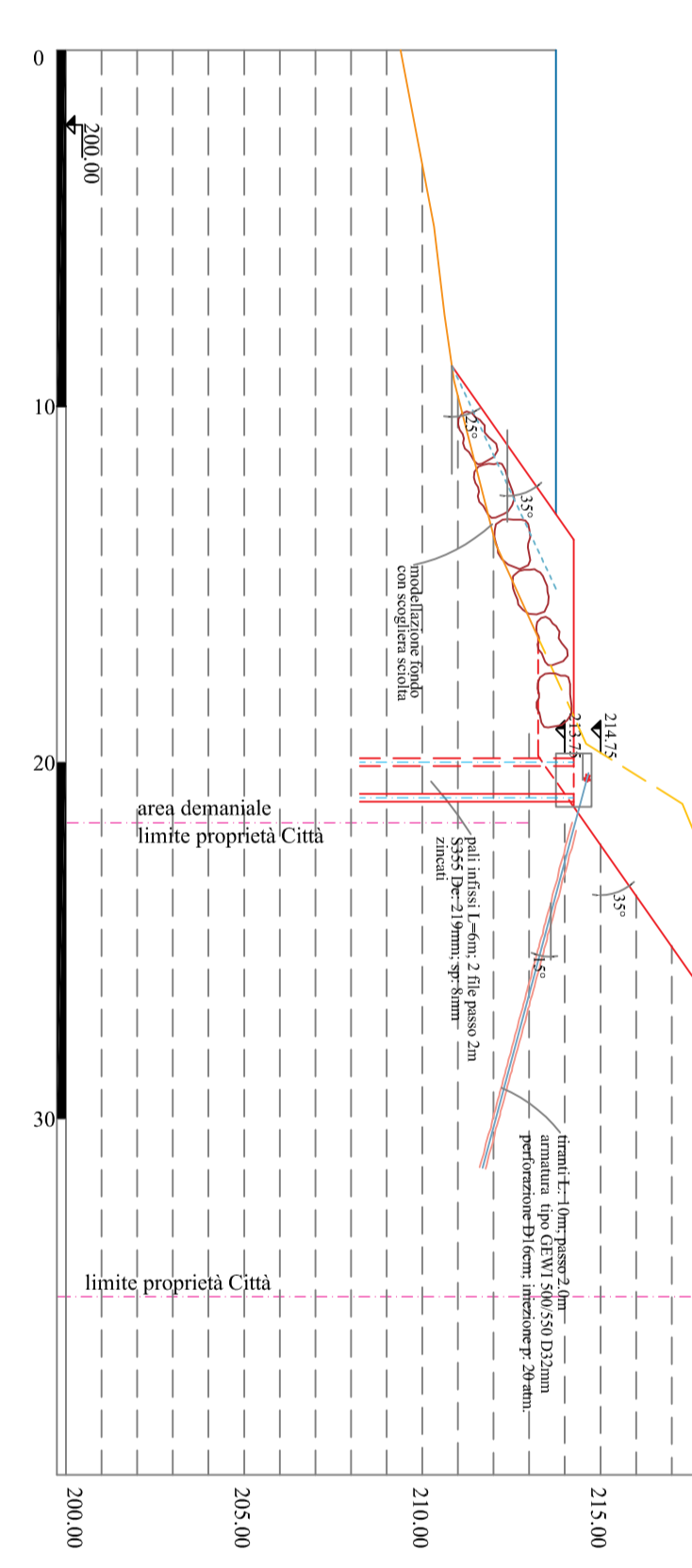
sez. A3



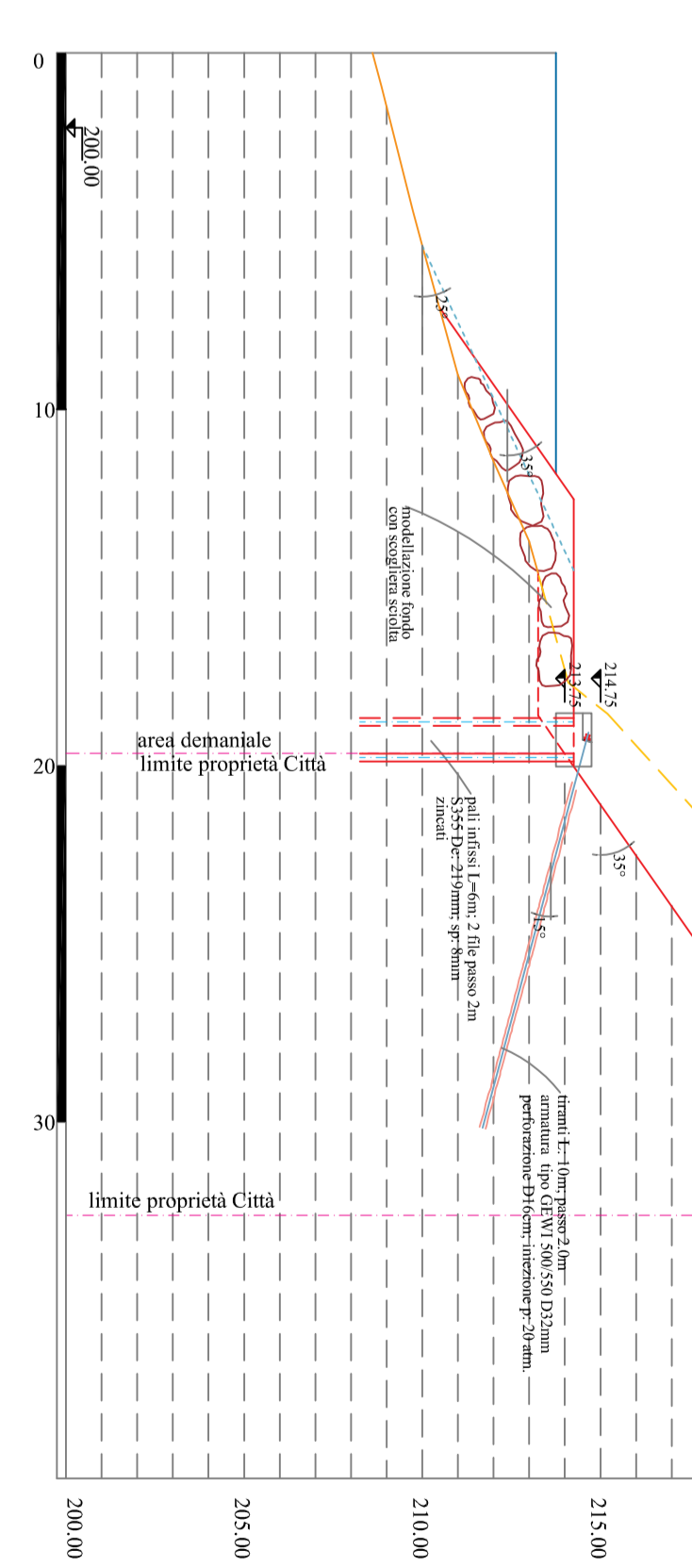
sez. A4



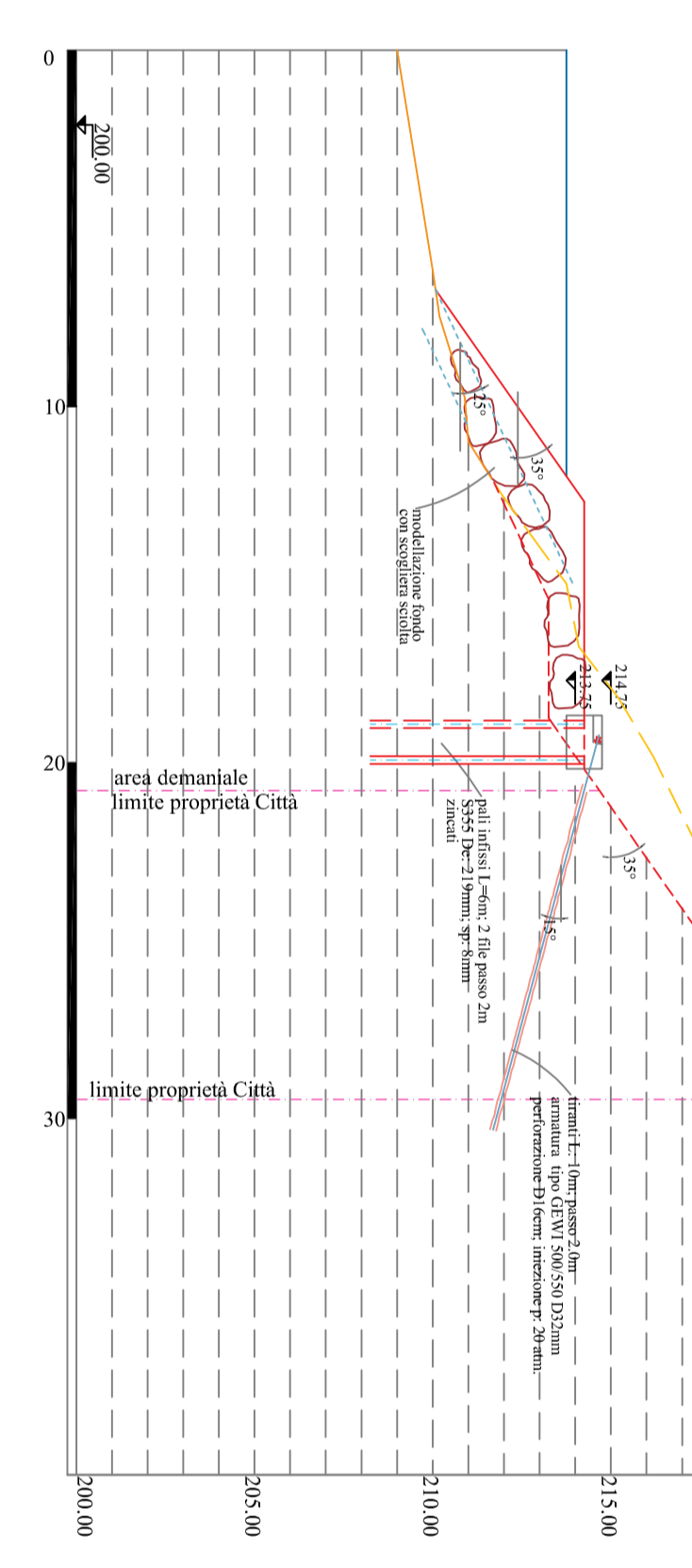
sez. A5



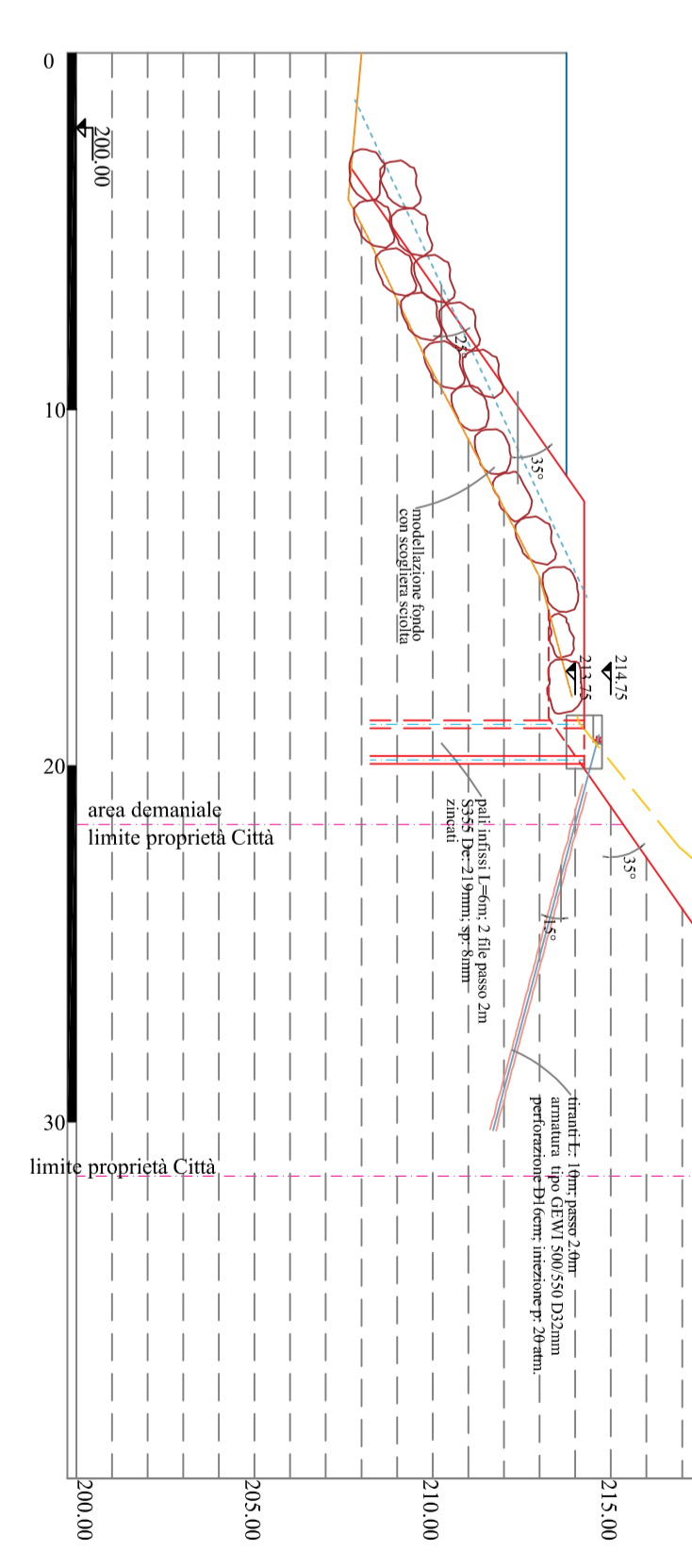
sez. A6



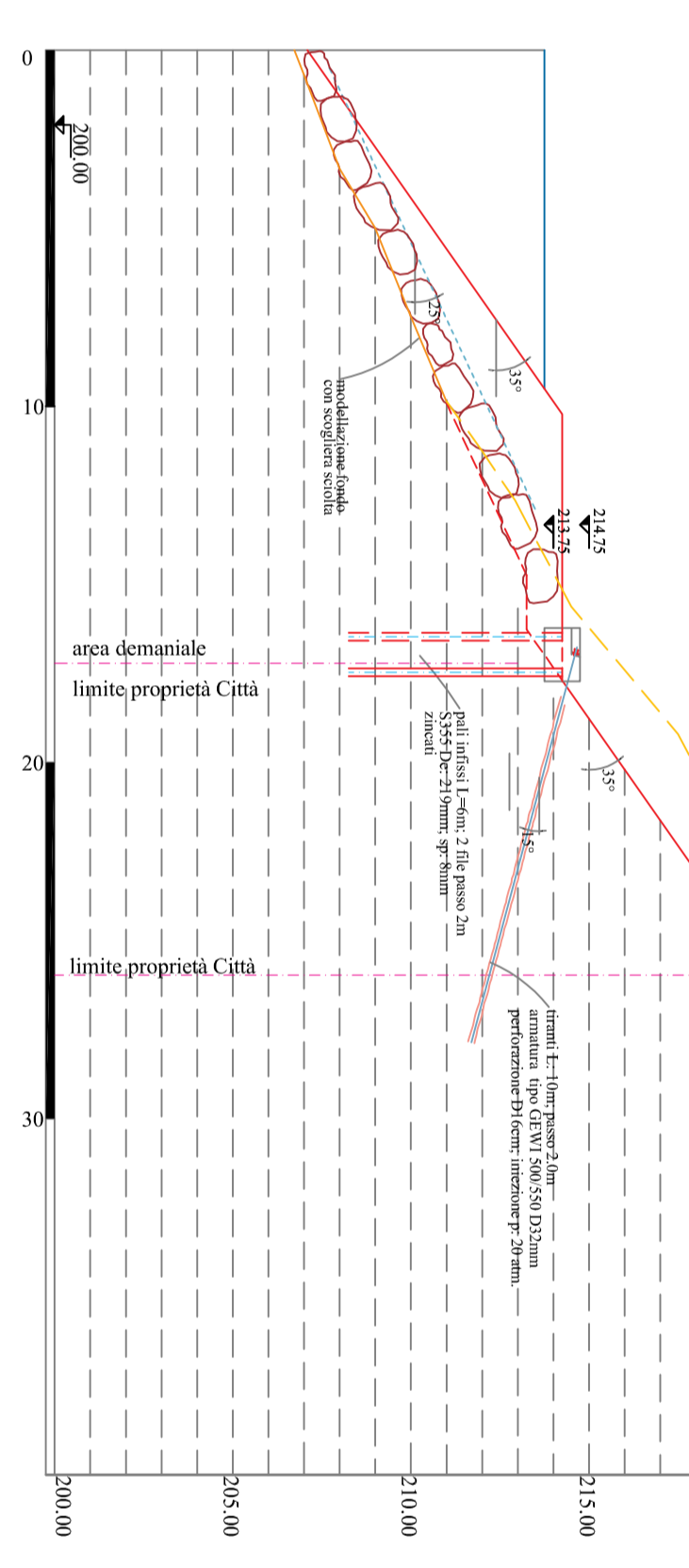
sez. A7



sez. A8



sez. A11



sez. A12

