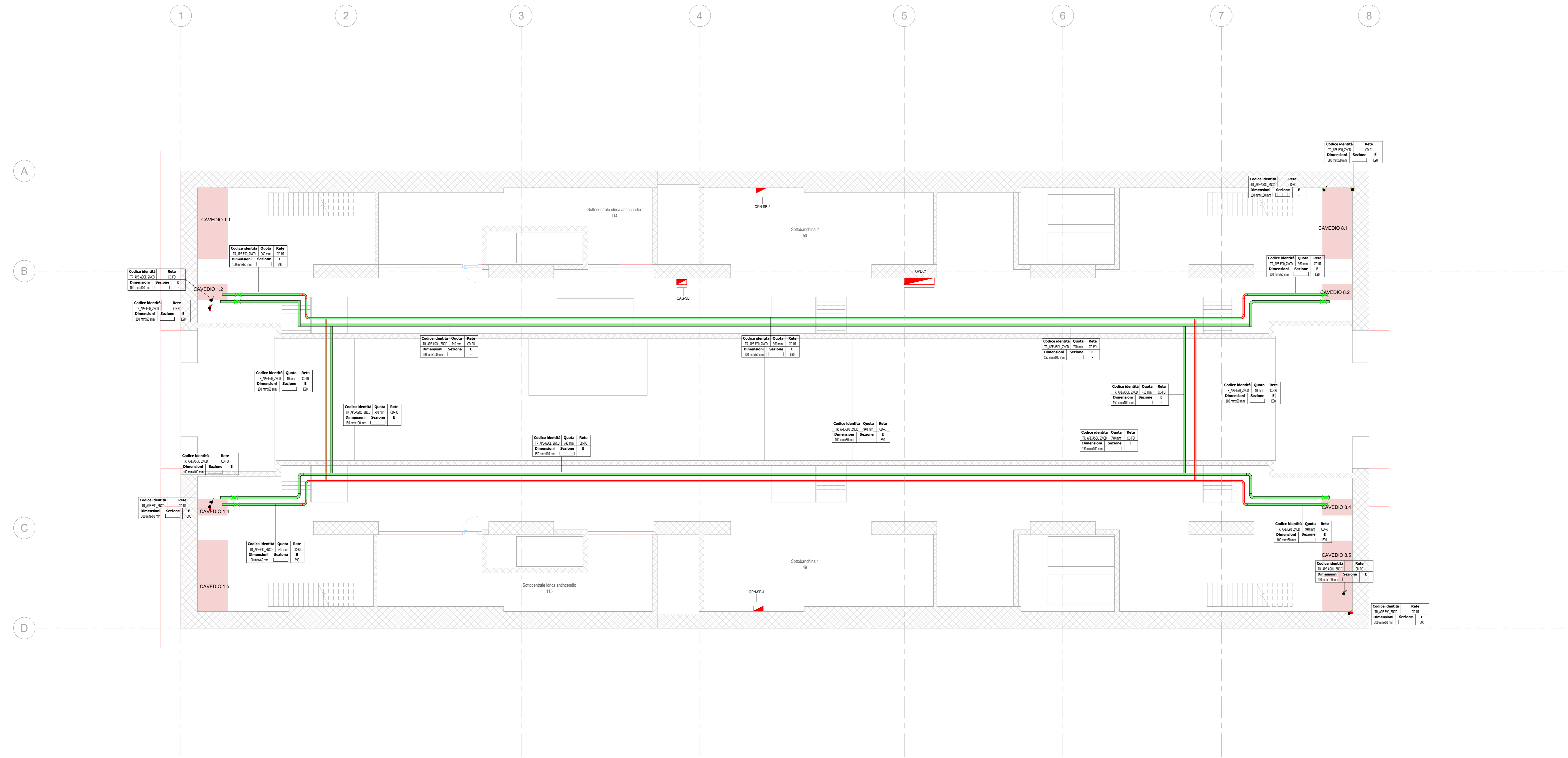
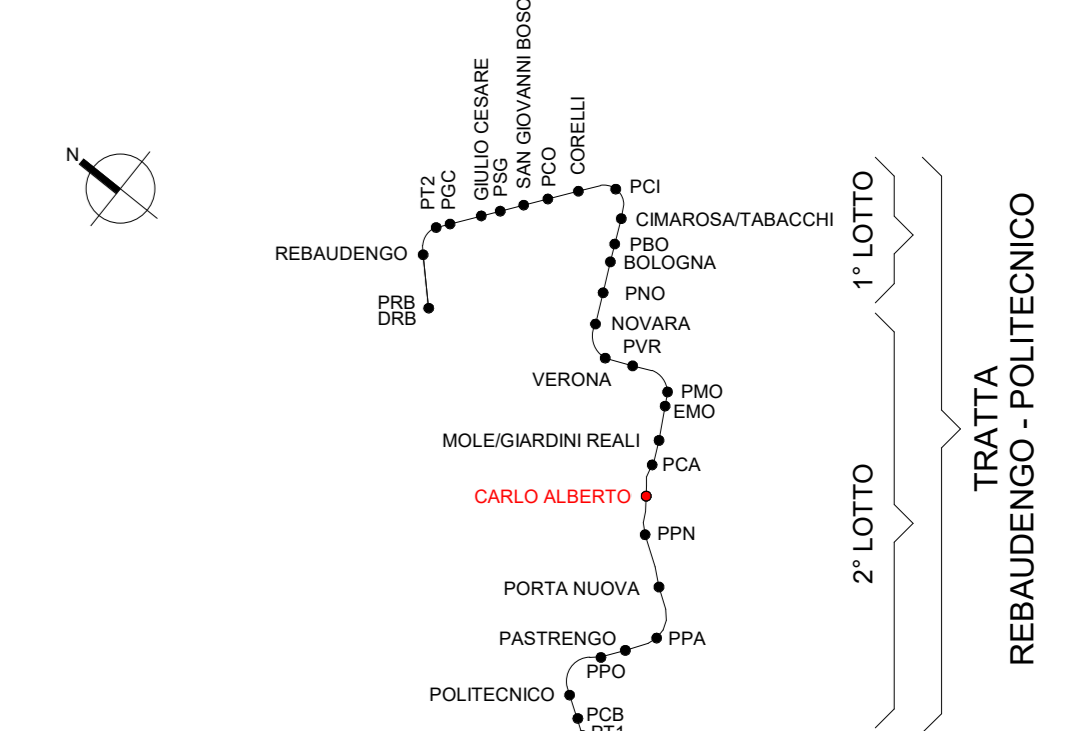
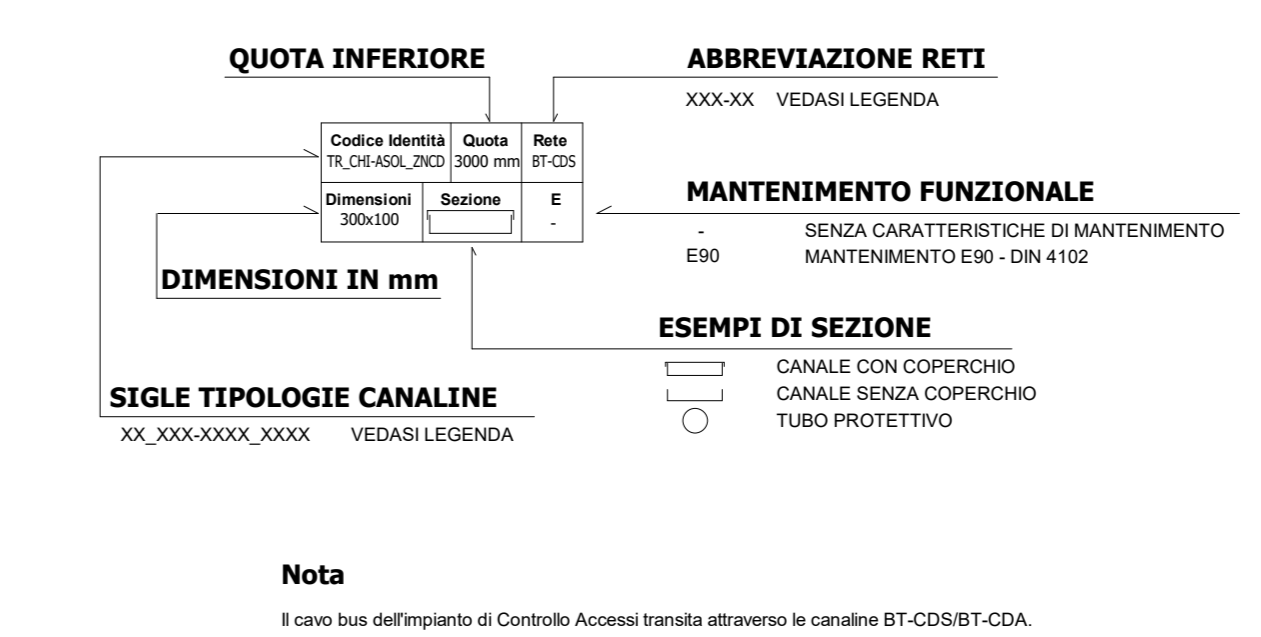


KEY PLAN



Legenda Distribuzione. This table defines symbols and abbreviations for various cable systems. It is divided into 'CANALINE NON DI SISTEMA' and 'CANALINE DI SISTEMA'. It lists items like 'Passerella portacavi', 'Canalina portacavi aperta', 'Canalina portacavi chiusa', and 'Tubo protettivo corrugato'. It also includes a section for 'BLINDOSBARRE' and 'POLIFORE INTERRATE'.



Nota: Il cavo bus dell'impianto di Controllo Accessi transita attraverso il canale BT-CDS/ST-CDA.

Legenda. This table lists electrical system components. It includes 'Attrezzature elettriche di sistema' (transformers, switchgear), 'QUADRI' (control panels), and 'Etichetta apparecchi elettrici' (equipment labels). It also contains a 'NOTE' section with technical specifications for materials and components.

Project information block from the City of Turin. It includes the logo of the 'MINISTERO DELLE INFRASTRUTTURE E DELLA MOBILITÀ SOSTENIBILI' and 'Mims'. It identifies the project as 'METROPOLITANA AUTOMATICA DI TORINO LINEA 2 - TRATTA POLITECNICO - REBAUDENGO' and 'PROGETTAZIONE DEFINITIVA'. It lists the project manager, engineer, and dates.